



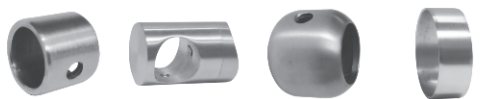
ROZET VE KAPAKLAR ..... 4 - 11



DİKME MAFSALLARI ..... 13 - 19



KÖŞE MAFSALLARI VE  
PATEN DİRSEKLER ..... 21 - 24



EMNİYET HATTI  
BAĞLANTI YÜZÜKLERİ ..... 26 - 28



ZEMİN VE DUVAR  
BAĞLANTI ELEMANLARI ..... 30 - 33



KOLÇAKLAR ..... 35 - 40



DİKME BABALARI VE  
BAĞLANTI ELEMANLARI ..... 42 - 44



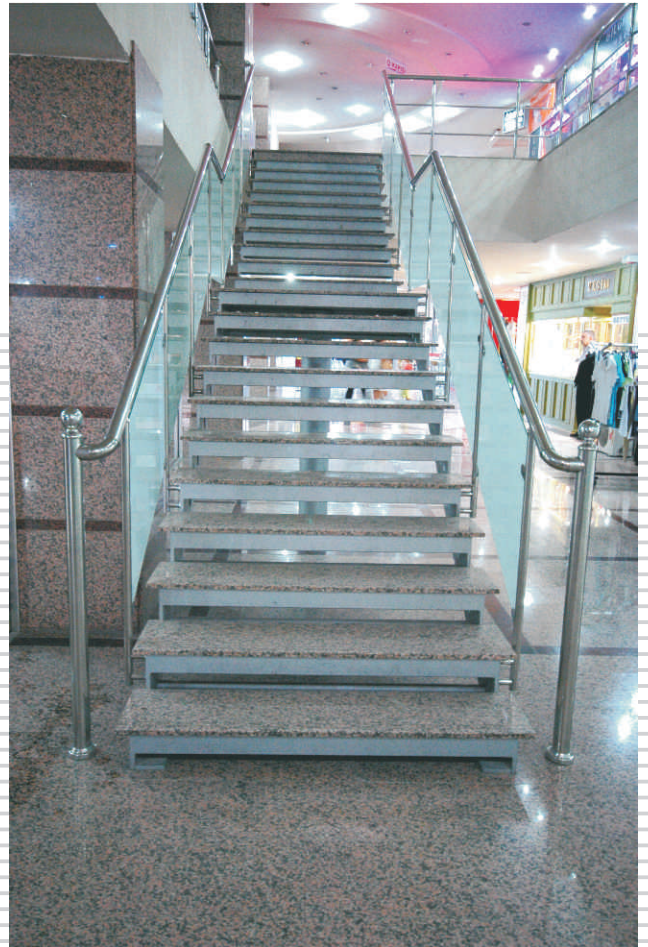
CAM TUTUCULARI VE  
BAĞLANTI AKSESUARLARI ..... 46 - 60

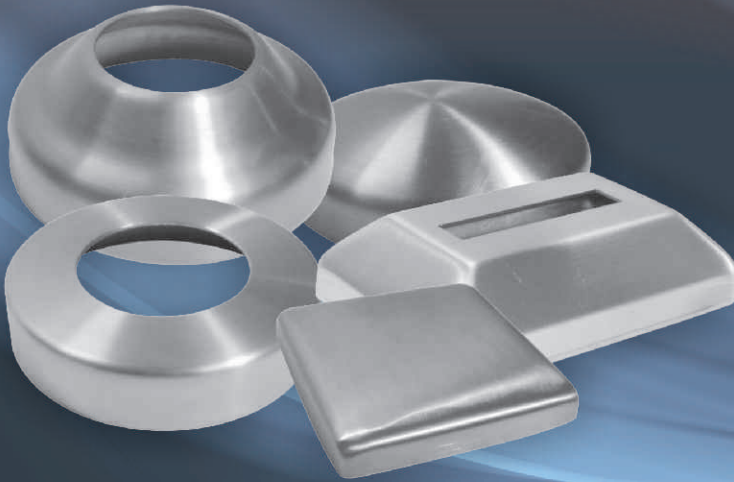
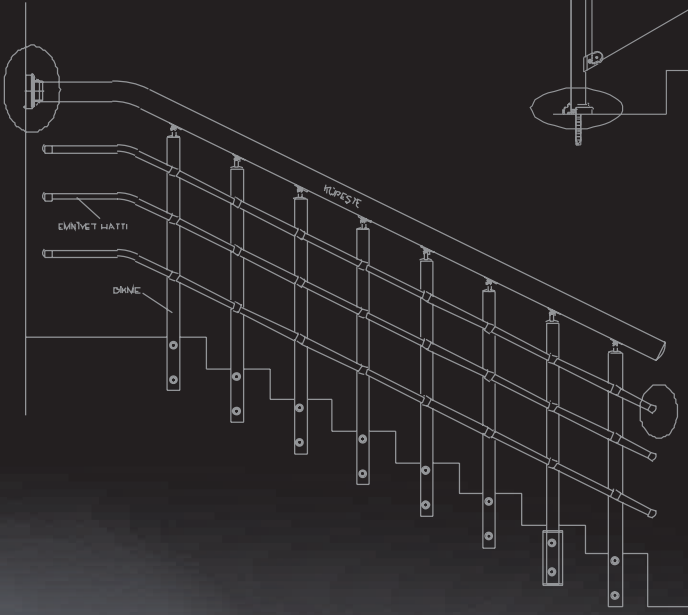
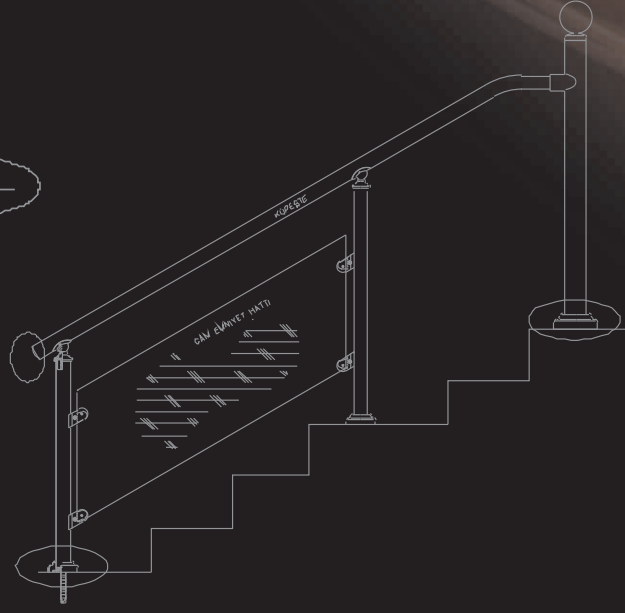
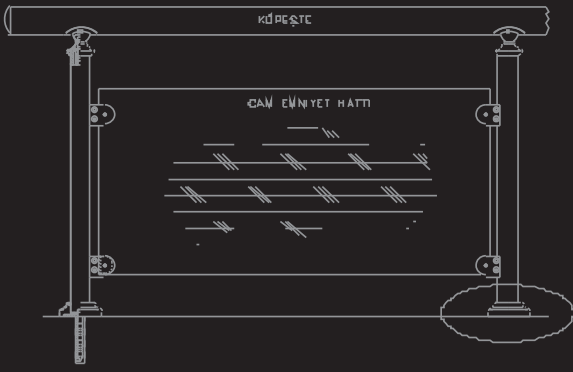


CUBICLE BAĞLANTI SİSTEMLERİ  
MENTEŞELER - KAPI STOPERLERİ ..... 62 - 70  
HALAT GERDİRME - ENGELLİ TUTAMAKLARI



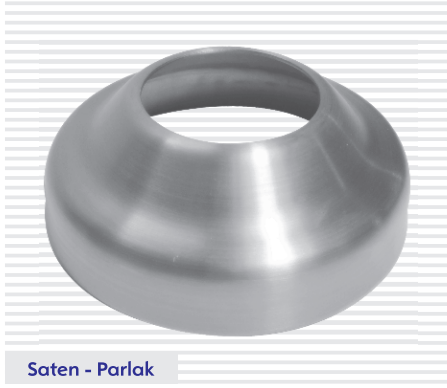
ÖZEL DEKORATİF DİKMELER  
BAYRAK DİREĞİ VE AKSESUARLARI ..... 72 - 87  
HIRDAVAT GRUBU





**ROZET VE KAPAKLAR**

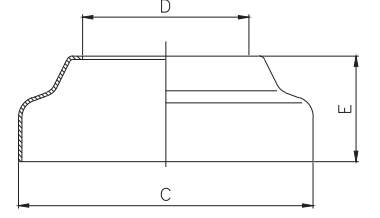
ROZET VE KAPAKLAR



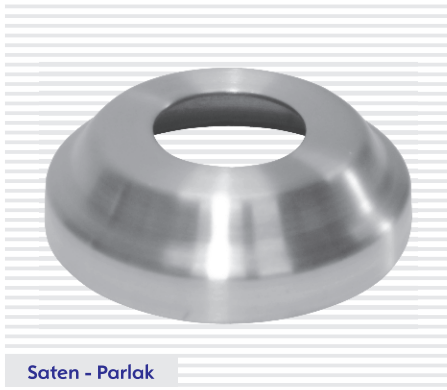
Saten - Parlak

### ROZET - PR

Boru Çapları ( D )	( C )	( E )
Ø 16-19-21-25	Ø 46	14.5
Ø 16-19-21-25-32	Ø 72	25
Ø 38-40-42	Ø 78	26
Ø 48-51	Ø 85	30.5
Ø 60	Ø 95	30.5
Ø 76	Ø 142.5	37.5



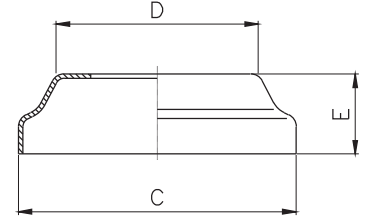
Malzeme = AISI 304



Saten - Parlak

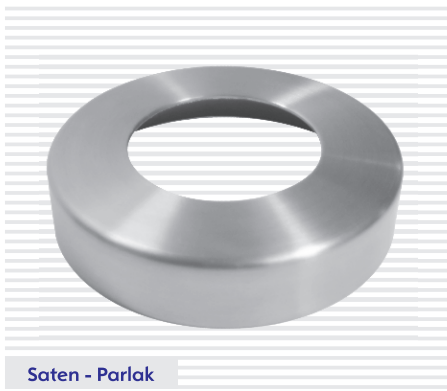
### ROZET - BPR

Boru Çapları ( D )	( C )	( E )
Ø 16-19-21-25-32-38-42	Ø 62.5	18



Malzeme = AISI 304

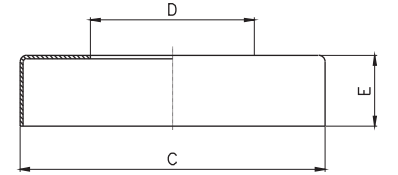
Kalınlık = 1 mm.



Saten - Parlak

### ROZET - DPR

Boru Çapları ( D )	( C )	( E )
Ø 25-32-38-42	Ø 72	14.5
Ø 51-60	Ø 95	22
Ø 32-38-42-51-60-70	Ø 104	23
Ø 32-38-42-51-60-70-76	Ø 142	24.5



Malzeme = AISI 304

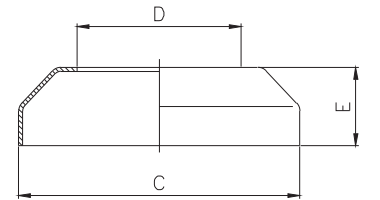
Kalınlık = 1 mm.



Saten - Parlak

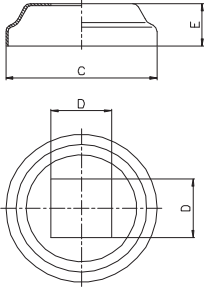
### ROZET - YPR

Boru Çapları ( D )	( C )	( E )
Ø 25-32-38-42	Ø 72	20
Ø 51-60	Ø 95	26

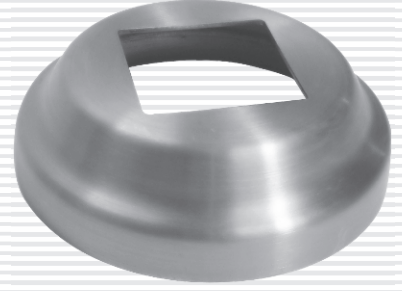


Malzeme = AISI 304

Kalınlık = 1 mm.

**ROZET - BPR**


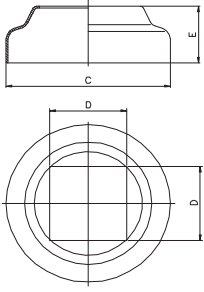
Profil Ölçüleri (D)	( C )	( E )
20x20- 25x25- 30x30	Ø62.5	18



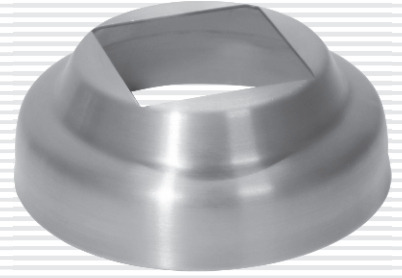
Saten - Parlak

Malzeme = AISI 304

Kalınlık = 1 mm.

**ROZET - PR**


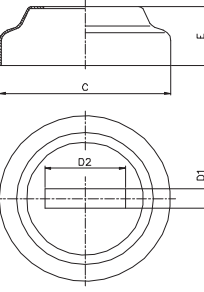
Profil Ölçüleri (D)	( C )	( E )
40x40	Ø85	30.5



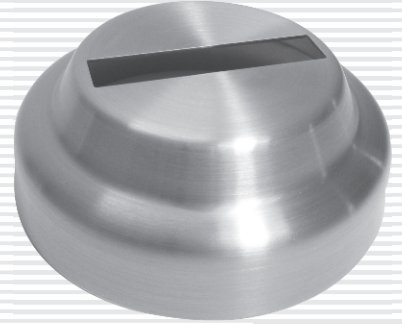
Saten - Parlak

Malzeme = AISI 304

Kalınlık = 1 mm.

**ROZET - PR**


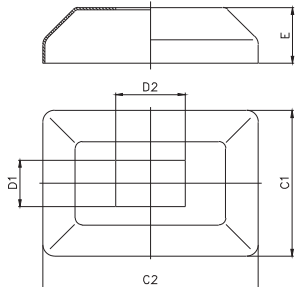
Profil Ölçüleri (D1, D2)	( C )	( E )
5x50- 10x30- 10x40	Ø85	30.5
10x50- 15x50- 20x40	Ø85	30.5



Saten - Parlak

Malzeme = AISI 304

Kalınlık = 1 mm.

**ROZET - DKPR**


Profil Ölçüleri (D1, D2)	(C1, C2)	( E )
10x30- 10x40- 10x50- 10x60	63x93	24
15x30- 15x40- 15x60		
20x30- 20x40- 20x50- 20x60		
30x40- 30x50- 30x60		



Saten - Parlak

Malzeme = AISI 304

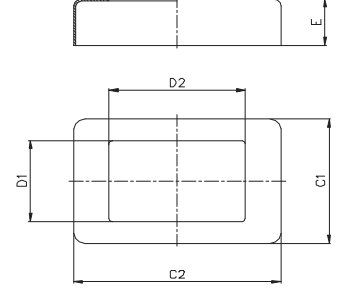
Kalınlık = 1 mm.



Saten - Parlak

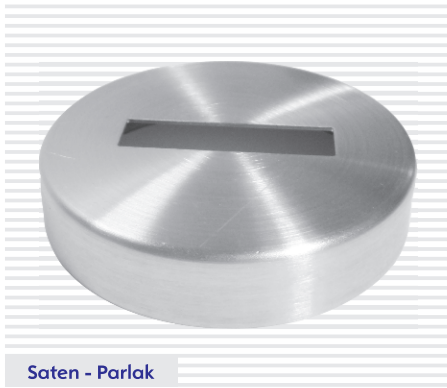
### ROZET - DDKPR

Profil Ölçüleri (D1-D2)	( C1-C2 )	( E )
10x30- 10x40- 10x50- 10x60	62x92	23
15x30- 15x40- 15x60		
20x30- 20x40- 20x50- 20x60		
30x40- 30x50- 30x60		



Malzeme = AISI 304

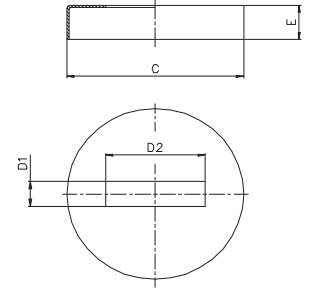
Kalınlık = 1 mm.



Saten - Parlak

### ROZET - DPR

Profil Ölçüleri (D1-D2)	( C )	( E )
10x30- 10x40- 10x50	Ø 72	14.5
15x30- 15x40	Ø 95	22
20x20- 30x30- 25x25- 40x40 20x30- 20x40- 20x50- 20x60	Ø 104	23
20x20- 30x30- 25x25- 40x40 30x40- 30x50- 30x60	Ø 142	24.5



Malzeme = AISI 304

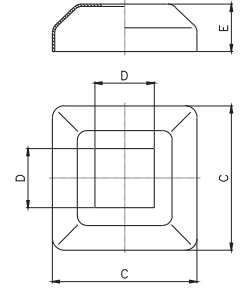
Kalınlık = 1 mm.



Saten - Parlak

### ROZET - KPR (61x61)

Profil Ölçüleri (D)	( C )	( E )
20x20- 25x25- 30x30	61x61	20



Malzeme = AISI 304

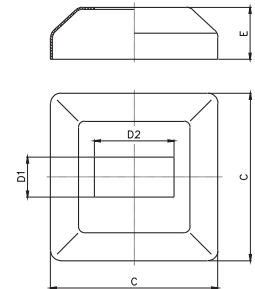
Kalınlık = 1 mm.



Saten - Parlak

### ROZET - KPR (84x84)

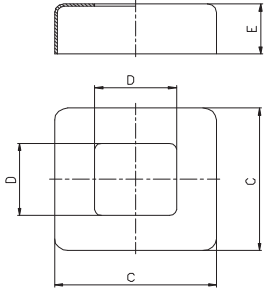
Profil Ölçüleri (D1-D2)	( C )	( E )
10x40- 10x50- 20x30- 20x40	84x84	26
20x50- 30x40- 30x50- 30x60		
40x40- 40x60- 50x50 60x60- 80x80		



Malzeme = AISI 304

Kalınlık = 1 mm.

### ROZET - KDPR (60x60)



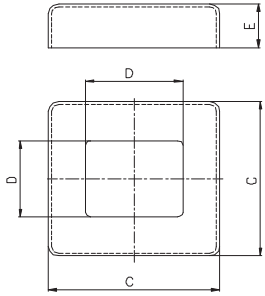
Profil Ölçüleri (D)	( C )	( E )
20x20- 25x25- 30x30- 40x40	60x60	21



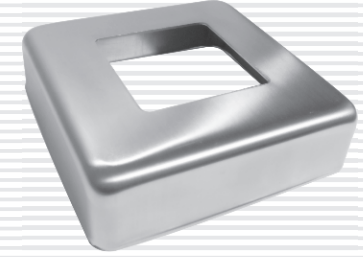
Malzeme = AISI 304 Kalınlık = 1 mm.

Saten - Parlak

### ROZET - KDPR (81x81)



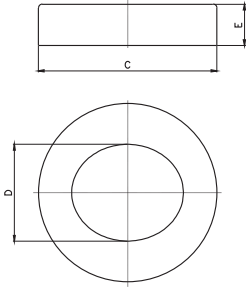
Profil Ölçüleri (D1-D2)	( C )	( E )
10x40- 10x50- 20x30- 20x40	81x81	23
20x50- 30x40- 30x50- 30x60		
40x40- 40x60- 50x50- 60x60		



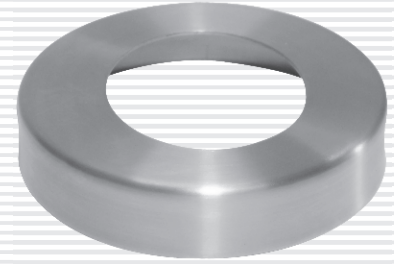
Malzeme = AISI 304 Kalınlık = 1 mm.

Saten - Parlak

### AÇILI ROZET - ADPR



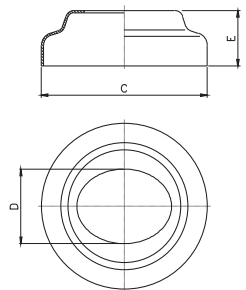
Boru Çapları ( D )	( C )	( E )
Ø32-38-42	Ø72	14.5
Ø51	Ø95	22



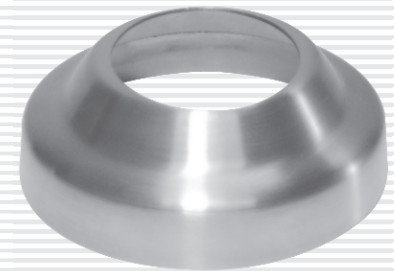
Malzeme = AISI 304 Kalınlık = 1 mm.

Saten - Parlak

### AÇILI ROZET - APR



Boru Çapları ( D )	( C )	( E )
Ø32-38	Ø78	26
Ø42	Ø85	30.5
Ø51	Ø95	30.5

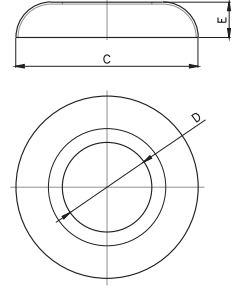


Malzeme = AISI 304 Kalınlık = 1 mm.

Saten - Parlak


**ROZET - HPR**

Boru Çapları ( D )	( C )	( E )
Ø25-32	Ø61	16
Ø51	Ø85.5	16.5

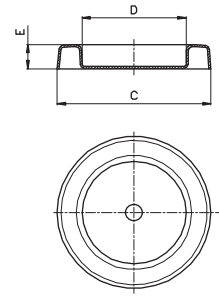


Malzeme = AISI 304

Kalınlık = 1 mm.


**DÜZ DUVAR ROZET - DDR**

Boru Çapları ( D )	( C )	( E )
Ø51	Ø75.5	12

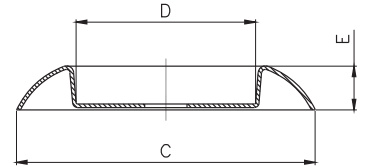


Malzeme = AISI 304

Kalınlık = 1 mm.


**DUVAR ROZET - DR**

Boru Çapları ( D )	( C )	( E )
Ø25	Ø41	8.2
Ø32	Ø51.3	8.2
Ø38	Ø64	9
Ø42	Ø70.6	9
Ø51	Ø85	12.5

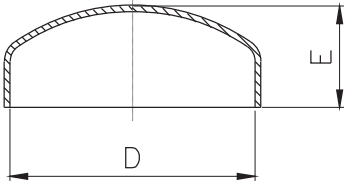


Malzeme = AISI 304

Kalınlık = 1 mm.



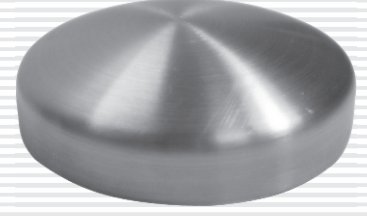
### GEÇME KAPAK - GK



Malzeme = AISI 304

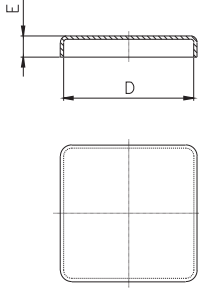
Kalınlık = 1 mm.

Boru Çapları ( D )	( E )
Ø16	14.8
Ø19	8.7
Ø21	11.8
Ø25	12
Ø32	15.8
Ø38	14
Ø40	13.2
Ø42	17.5
Ø48	15
Ø51	15.5
Ø60	19
Ø70	18.3
Ø76	20.8



Saten - Parlak

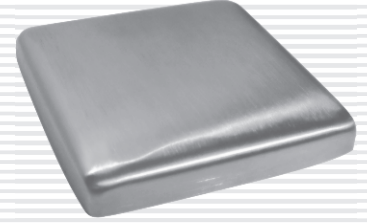
### KARE GEÇME KAPAK - GK



Malzeme = AISI 304

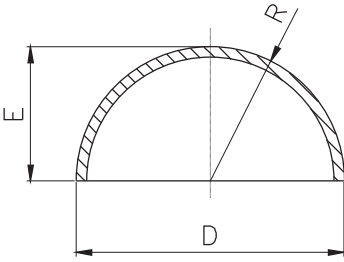
Kalınlık = 1 mm.

Boru Çapları ( D )	( E )
15x15	4.6
30x30	4.6
40x40	6.5
50x50	6
60x60	10
80x80	10.5



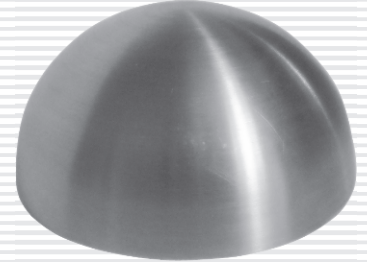
Saten - Parlak

### KAYNAKLI KÜRE KAPAK - KK



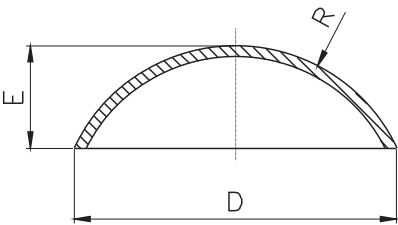
Malzeme = AISI 304

Boru Çapları ( D )	Malzeme Kalınlığı	( E )
Ø16	1,5 mm.	8
Ø19	1,5 mm.	9,5
Ø21	1,5 mm.	10,5
Ø25	1,5 mm.	12,5
Ø32	1,5 mm.	16
Ø38	1,5 mm.	19
Ø42	1,5 mm.	21
Ø48	2 mm.	24
Ø51	2 mm.	25,5
Ø60	2 mm.	30
Ø70	2 mm.	35
Ø76	1,5 mm.	38
Ø90	1,5 mm.	45



Saten - Parlak

### KAYNAKLI KAPAK - KKC (ÇİN ŞAPKASI)



Malzeme = AISI 304

Boru Çapları ( D )	( E )
Ø42	14.8
Ø51	15.6
Ø60	19
Ø76	8.2
Ø100,6	13



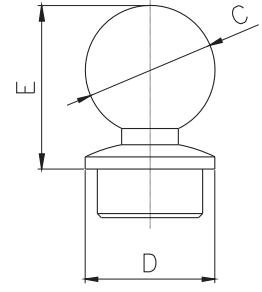
Saten - Parlak



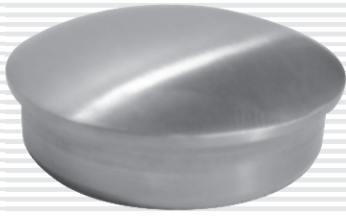
Saten - Parlak

### KÜRE GEÇME KAPAK DOLU - KGKD

Boru Çapları ( D )	( C )	( E )
Ø 16 x 1.5	Ø 16	20.2
Ø 19 x 1.5	Ø 19	22.6
Ø 21 x 1.5	Ø 21	25.3
Ø 25 x 1.5	Ø 25	28.3
Ø 32 x 1.5	Ø 32	36.8
Ø 38 x 1.5	Ø 38	41.8
Ø 42 x 1.5	Ø 42	45.8



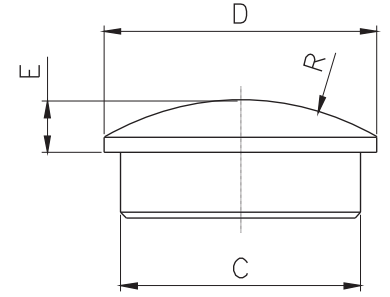
Malzeme = AISI 303-304



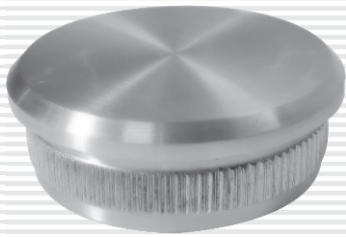
Saten - Parlak

### İÇE GEÇME KAPAK DOLU - GKD

Boru Çapları ( D )	( C )	( E )
Ø 16 x 1.5	Ø 13	4.5
Ø 19 x 1.5	Ø 16	4.5
Ø 21 x 1.5	Ø 18	4.5
Ø 25 x 1.5	Ø 22	4.5
Ø 32 x 1.5	Ø 29	4.5
Ø 38 x 1.5	Ø 35	5.5
Ø 42 x 1.5	Ø 39	7



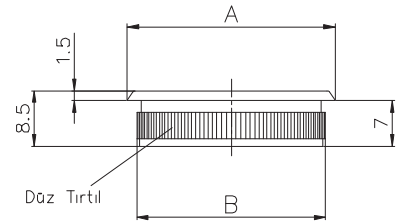
Malzeme = AISI 303-304



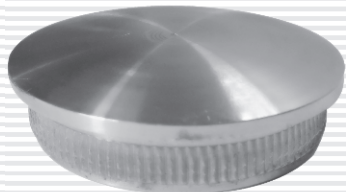
Saten - Parlak

### DOLU TIRNAKLI KAPAK DTK

Boru Çapları ( A )	( B )
Ø 32 x 1.5	Ø 29.4
Ø 38 x 1.5	Ø 35.4
Ø 42 x 1.5	Ø 39.4
Ø 42 x 2	Ø 38.7
Ø 51 x 1.5	Ø 48.4



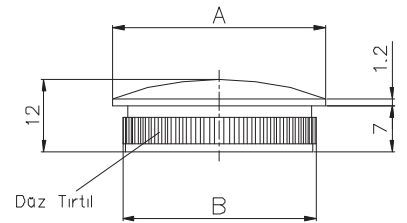
Malzeme = AISI 304-316



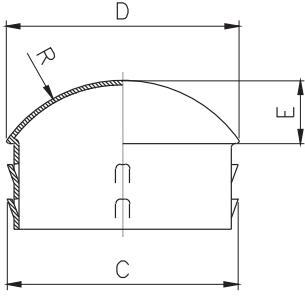
Saten - Parlak

### DOLU TIRNAKLI KAPAK BOMBELİ - DTKB

Boru Çapları ( A )	( B )
Ø 32 x 1.5	Ø 29.4
Ø 38 x 1.5	Ø 35.4
Ø 42 x 1.5	Ø 39.4
Ø 42 x 2	Ø 38.7
Ø 51 x 1.5	Ø 48.4

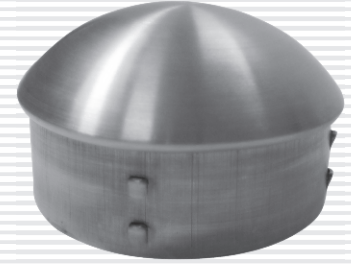


Malzeme = AISI 304-316

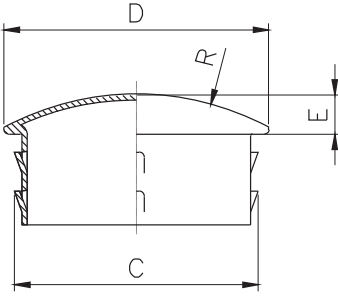
**TIRNAKLI İÇE GEÇME KAPAK (BOMBELİ) - TKB**


Malzeme = AISI 304

Boru Çapları ( D )	( C )	( E )
Ø42 x 1.5	Ø40	11.5
Ø51 x 1.5	Ø49	15
Ø60 x 1.5	Ø58.5	18

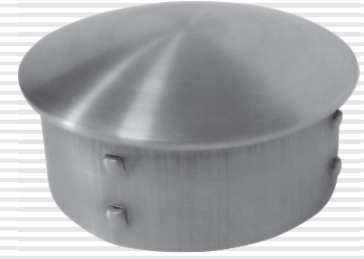


Saten - Parlak

**TIRNAKLI İÇE GEÇME KAPAK - TK**


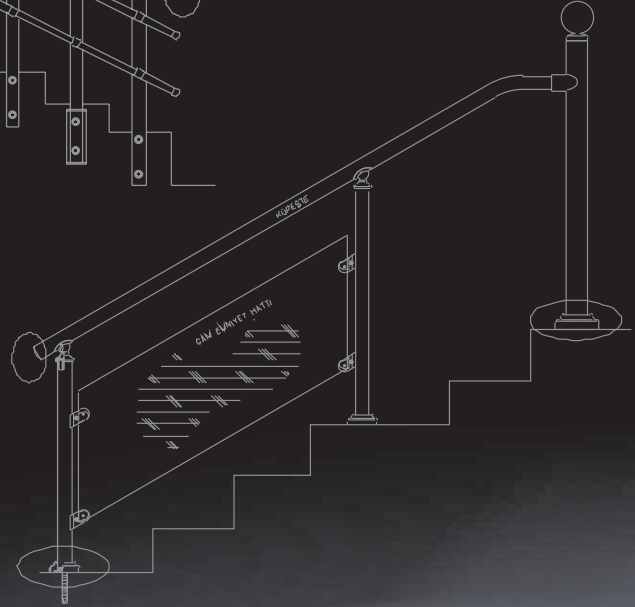
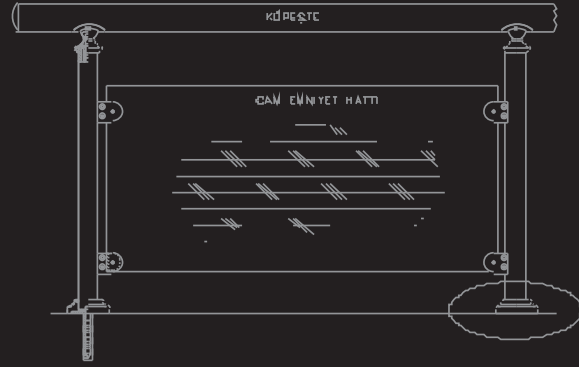
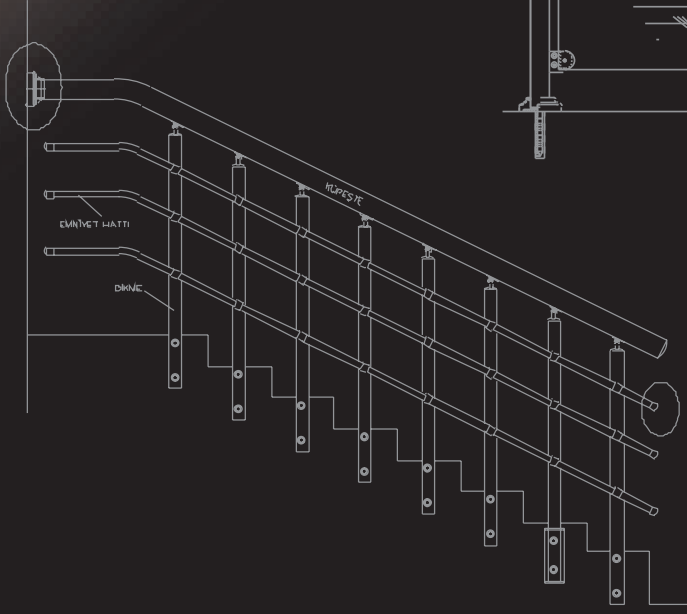
Malzeme = AISI 304

Boru Çapları ( D )	( C )	( E )
Ø32 x 1.5	Ø30.5	4
Ø38 x 1.5	Ø36.5	5.5
Ø40 x 1.5	Ø38	6.5
Ø42 x 1.5	Ø40	6.5
Ø48 x 1.5	Ø45.5	6
Ø51 x 1.5	Ø49	7.5
Ø60 x 1.5	Ø57.5	9.5
Ø70 x 1.5	Ø68	11.3
Ø76 x 1.5	Ø74	12



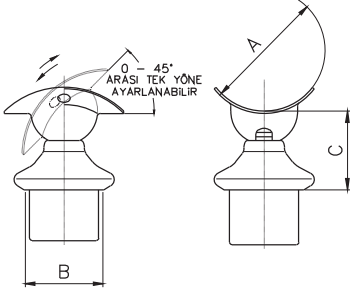
Saten - Parlak

# DİKME MAFSALLARI



**DİKME MAFSALLARI**

### DİKME MAFSAL / DM-100



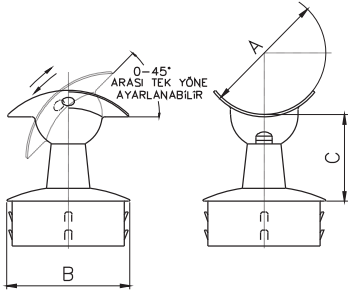
Malzeme = AISI 304 - Plastik

Küpeşte Çapları ( A )	Dikme Çapları (B)	( C )
Ø32-38-42-48-51-60	Ø32 x 1.5	36
Ø38-42-48-51-60	Ø38 x 1.5	36
Ø42-48-51-60	Ø40 x 1.5	42
Ø42-48-51-60	Ø42 x 1.5	42
Ø51-60	Ø51 x 1.5	42
Ø60	Ø60 x 1.5	45



Saten - Parlak

### DİKME MAFSAL / DMTK-100



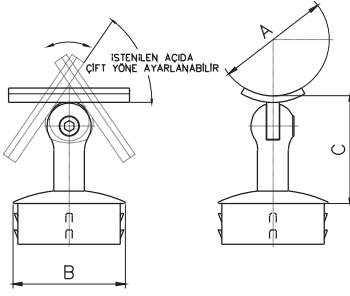
Malzeme = AISI 304

Küpeşte Çapları ( A )	Dikme Çapları (B)	( C )
Ø32-38-42-48-51-60	Ø32 x 1.5	36
Ø38-42-48-51-60	Ø38 x 1.5	37
Ø42-48-51-60	Ø40 x 1.5	38
Ø42-48-51-60	Ø42 x 1.5	38
Ø48-51-60	Ø48 x 1.5	38
Ø51-60	Ø51 x 1.5	39
Ø60	Ø60 x 1.5	39



Saten - Parlak

### DİKME MAFSAL / DM-200



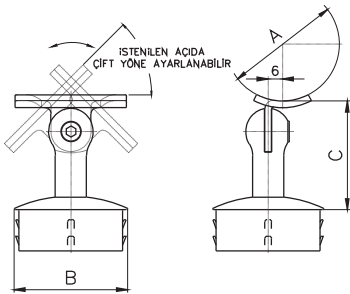
Malzeme = AISI 304

Küpeşte Çapları ( A )	Dikme Çapları (B)	( C )
Ø32-38-42-48-51-60	Ø32 x 1.5	46
Ø38-42-48-51-60	Ø38 x 1.5	46
Ø42-48-51-60	Ø40 x 1.5	46
Ø42-48-51-60	Ø42 x 1.5	46
Ø48-51-60	Ø48 x 1.5	46
Ø51-60	Ø51 x 1.5	46
Ø60	Ø60 x 1.5	53



Saten - Parlak

### DİKME MAFSAL / DMA-200



Malzeme = AISI 304

Küpeşte Çapları ( A )	Dikme Çapları (B)	( C )
Ø32-38-42-48-51-60	Ø32 x 1.5	46
Ø38-42-48-51-60	Ø38 x 1.5	46
Ø42-48-51-60	Ø40 x 1.5	46
Ø42-48-51-60	Ø42 x 1.5	46
Ø48-51-60	Ø48 x 1.5	46
Ø51-60	Ø51 x 1.5	46
Ø60	Ø60 x 1.5	53



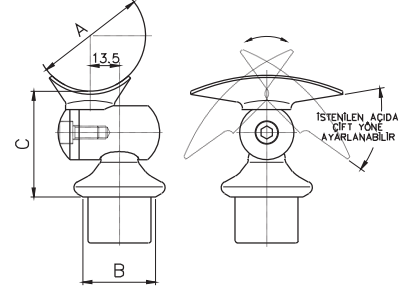
Saten - Parlak



Saten - Parlak

### DİKME MAFSAL / DM-300

Küpeşte Çapları ( A )	Dikme Çapları (B)	( C )
Ø51	Ø32 x 1.5	49
Ø51	Ø38 x 1.5	49
Ø51	Ø40 x 1.5	49
Ø51	Ø42 x 1.5	49
Ø51	Ø51 x 1.5	49



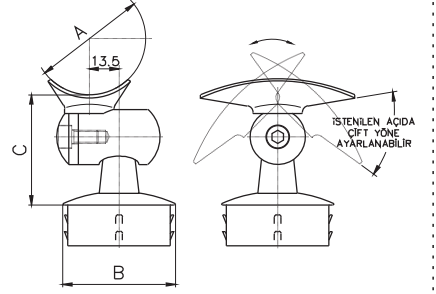
Malzeme = AISI 304 + Plastik



Saten - Parlak

### DİKME MAFSAL / DMTK-300

Küpeşte Çapları ( A )	Dikme Çapları (B)	( C )
Ø51	Ø32 x 1.5	50
Ø51	Ø38 x 1.5	50
Ø51	Ø40 x 1.5	50
Ø51	Ø42 x 1.5	50
Ø51	Ø48 x 1.5	50
Ø51	Ø51 x 1.5	50



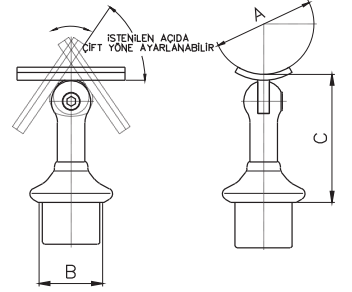
Malzeme = AISI 304



Saten - Parlak

### DİKME MAFSAL / DM-400

Küpeşte Çapları ( A )	Dikme Çapları (B)	( C )
Ø32-38-42-48-51-60	Ø32 x 1.5	65
Ø38-42-48-51-60	Ø38 x 1.5	65
Ø42-48-51-60	Ø40 x 1.5	65
Ø42-48-51-60	Ø42 x 1.5	65
Ø51-60	Ø51 x 1.5	65
Ø51-60	Ø60 x 1.5	65



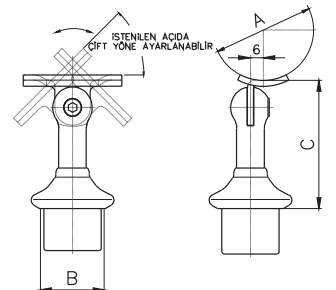
Malzeme = AISI 304 + Plastik



Saten - Parlak

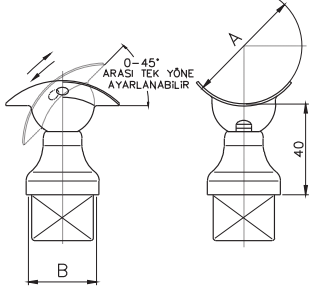
### DİKME MAFSAL / DMA-400

Küpeşte Çapları ( A )	Dikme Çapları (B)	( C )
Ø32-38-42-48-51-60	Ø32 x 1.5	65
Ø38-42-48-51-60	Ø38 x 1.5	65
Ø42-48-51-60	Ø40 x 1.5	65
Ø42-48-51-60	Ø42 x 1.5	65
Ø51-60	Ø51 x 1.5	65
Ø51-60	Ø60 x 1.5	65



Malzeme = AISI 304 + Plastik

### DİKME MAFSAL KARE / DM-500



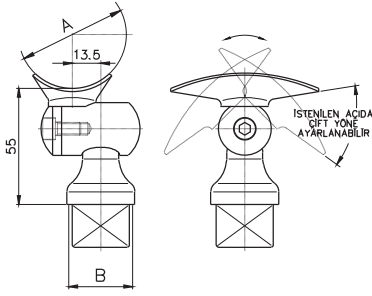
Küpeşte Çapları ( A )	Profil Ölçüsü ( B )
Ø 32-38-42-48-51-60	30x30x1.5

Malzeme = AISI 304 + Plastik



Saten - Parlak

### DİKME MAFSAL KARE / DM-600



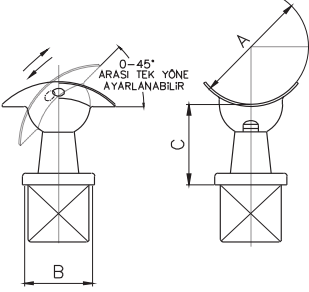
Küpeşte Çapları ( A )	Profil Ölçüsü ( B )
Ø 51	30x30x 1.5

Malzeme = AISI 304 + Plastik



Saten - Parlak

### DİKME MAFSAL KARE / DM-700



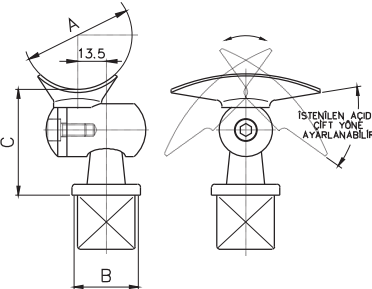
Küpeşte Çapları ( A )	Dikme Çapları ( B )	( C )
Ø 38-42-48-51-60	30x30x 1.5	36
	40x40x 1.5	36
	50x50x 1.5	36

Malzeme = AISI 304 + Plastik



Saten - Parlak

### DİKME MAFSAL KARE / DM-800



Küpeşte Çapları ( A )	Dikme Çapları ( B )	( C )
Ø 51	30x30x 1.5	55
	40x40x 1.5	55
	50x50x 1.5	55

Malzeme = AISI 304 + Plastik



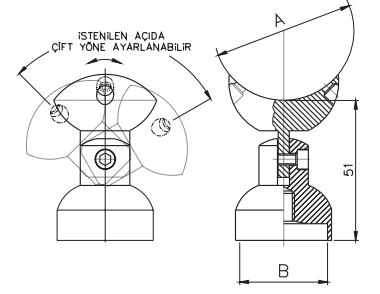
Saten - Parlak



Saten - Parlak

### DİKME MAFSAL / DM-900

Küpeşte Çapları ( A )	Dikme Çapları (B)
Ø51	Ø32 x 1.5
Ø51	Ø38 x 1.5
Ø51	Ø42 x 1.5
Ø51	Ø50 x 1.5



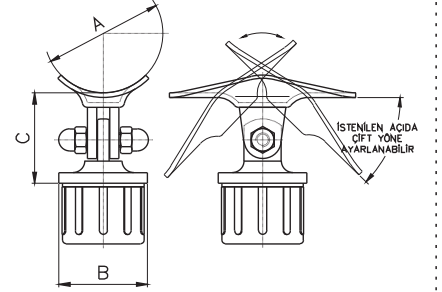
Malzeme = AISI 304



Saten - Parlak

### DİKME MAFSAL / DM-1000

Küpeşte Çapları ( A )	Dikme Çapları (B)	( C )
Ø51	Ø32 x 1.5	50
Ø51	Ø38 x 1.5	50
Ø51	Ø42 x 1.5	50
Ø51	Ø50 x 1.5	50



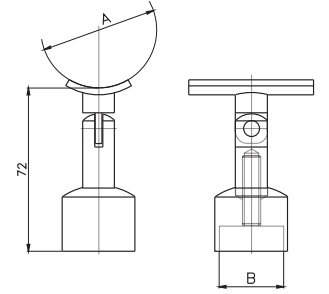
Malzeme = AISI 304-Plastik



Saten - Parlak

### DİKME MAFSAL / DM-1100

Küpeşte Çapları ( A )	Dikme Çapları (B)
Ø32-38-42-48-51-60	Ø32 x 1.5
Ø38-42-48-51-60	Ø38 x 1.5
Ø42-48-51-60	Ø42 x 1.5
Ø51-60	Ø51 x 1.5



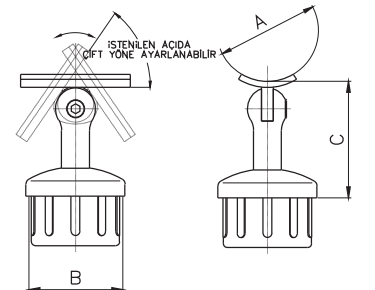
Malzeme = AISI 304-316



Saten - Parlak

### DİKME MAFSAL / DM-1200

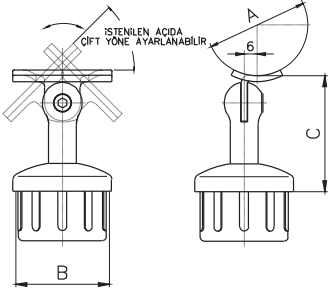
Küpeşte Çapları ( A )	Dikme Çapları (B)	( C )
Ø32-38-42-48-51-60	Ø32 x 1.5	65
Ø38-42-48-51-60	Ø38 x 1.5	65
Ø42-48-51-60	Ø40 x 1.5	65
Ø42-48-51-60	Ø42 x 1.5	65
Ø51-60	Ø51 x 1.5	65
Ø51-60	Ø60 x 1.5	65



Malzeme = AISI 304-Plastik



### DİKME MAFSAL / DMA-1200



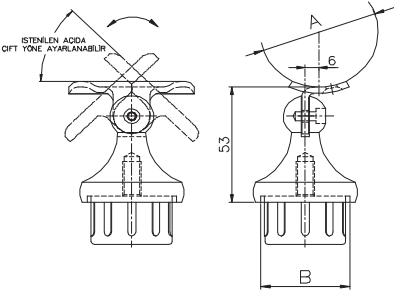
Malzeme = AISI 304-Plastik

Küpeşte Çapları ( A )	Dikme Çapları (B)	( C )
Ø32-38-42-48-51-60	Ø32 x 1.5	60
Ø38-42-48-51-60	Ø38 x 1.5	60
Ø42-48-51-60	Ø40 x 1.5	60
Ø42-48-51-60	Ø42 x 1.5	60
Ø51-60	Ø51 x 1.5	60
Ø60	Ø60 x 1.5	60



Saten - Parlak

### DİKME MAFSAL / DMA-1300



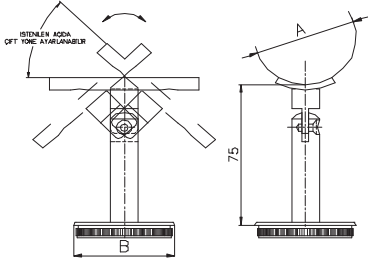
Malzeme = AISI 304-316-Plastik

Küpeşte Çapları ( A )	Dikme Çapları (B)
Ø32-38-42-48-51-60	Ø32
Ø38-42-48-51-60	Ø38
Ø42-48-51-60	Ø42
Ø48-51-60	Ø48
Ø51-60	Ø51



Saten - Parlak

### DİKME MAFSAL / DM-1400



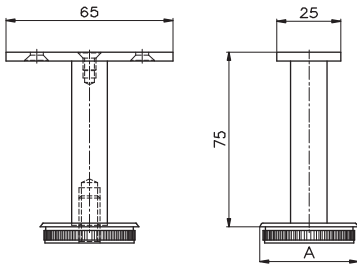
Malzeme = AISI 304-316

Küpeşte Çapları ( A )	Dikme Çapları (B)
Ø32-38-42-48-51-60	Ø32 x 1.5
Ø38-42-48-51-60	Ø38 x 1.5
Ø42-48-51-60	Ø42 x 1.5
Ø42-48-51-60	Ø42 x 2
Ø51-60	Ø51 x 1.5



Saten - Parlak

### DİKME MAFSAL / DM-1500



Malzeme = AISI 304-316

Dikme Çapları (A)
Ø32 x 1.5
Ø38 x 1.5
Ø42 x 1.5
Ø42 x 2
Ø51 x 1.5



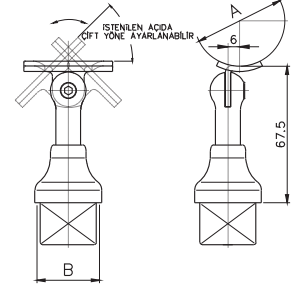
Saten - Parlak

### DİKME MAFSAL KARE / DMKA-01



Saten - Parlak

Küpeşte Çapları ( A )	Dikme Çapları ( B )
Ø 42-48-51-60	30x30x 1.5



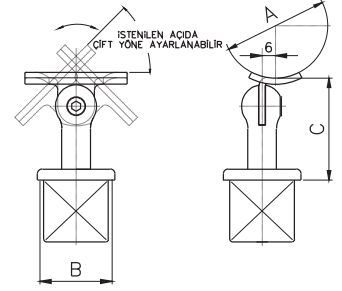
Malzeme = AISI 304-Plastik

### DİKME MAFSAL KARE / DMKA-02



Saten - Parlak

Küpeşte Çapları ( A )	Dikme Çapları ( B )	( C )
Ø 42-48-51-60	30x30x 1.5	46
	40x40x 1.5	46
	50x50x 1.5	46



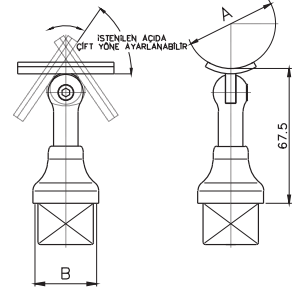
Malzeme = AISI 304-Plastik

### DİKME MAFSAL KARE / DMK-01



Saten - Parlak

Küpeşte Çapları ( A )	Dikme Çapları ( B )
Ø 42-48-51-60	30x30x 1.5



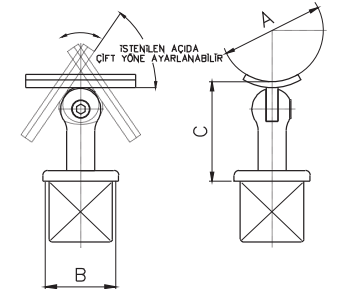
Malzeme = AISI 304-Plastik

### DİKME MAFSAL KARE / DMK-02



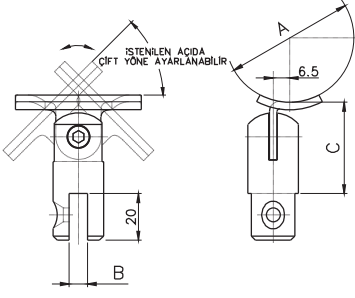
Saten - Parlak

Küpeşte Çapları ( A )	Dikme Çapları ( B )	( C )
Ø 42-48-51-60	30x30x 1.5	46
	40x40x 1.5	46
	50x50x 1.5	46



Malzeme = AISI 304-Plastik

### DİKME MAFSAL / DM-LMA



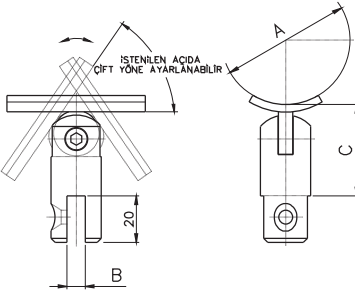
Malzeme = AISI 304

Küpeşte Çapları ( A )	Dikme Lamaı (B)	( C )
Ø 32-38-42-48-51-60	5 mm.	37
	10 mm.	37



Saten - Parlak

### DİKME MAFSAL / DM-LM



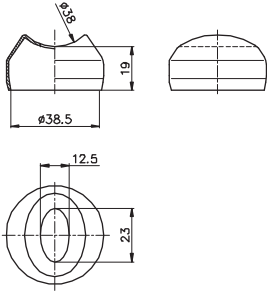
Malzeme = AISI 304

Küpeşte Çapları ( A )	Dikme Çapları (B)	( C )
Ø 32-38-42-48-51-60	5 mm.	37
	10 mm.	37



Saten - Parlak

### Ø 38 - DİKME TEPESİ

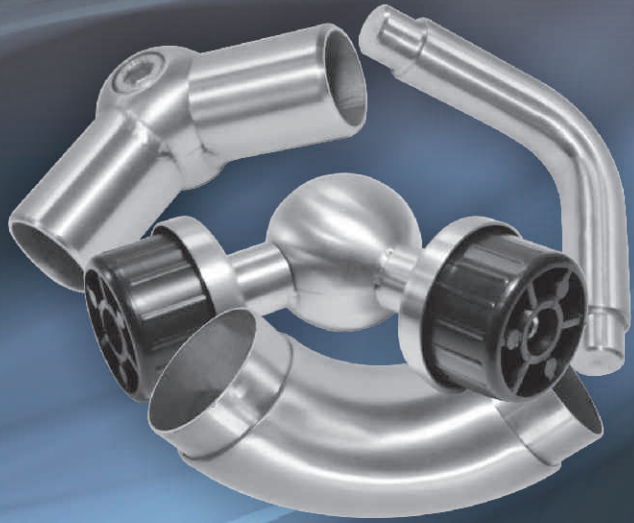
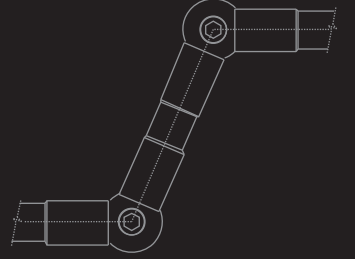
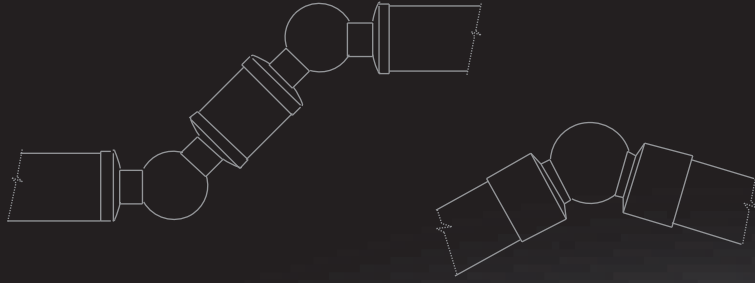
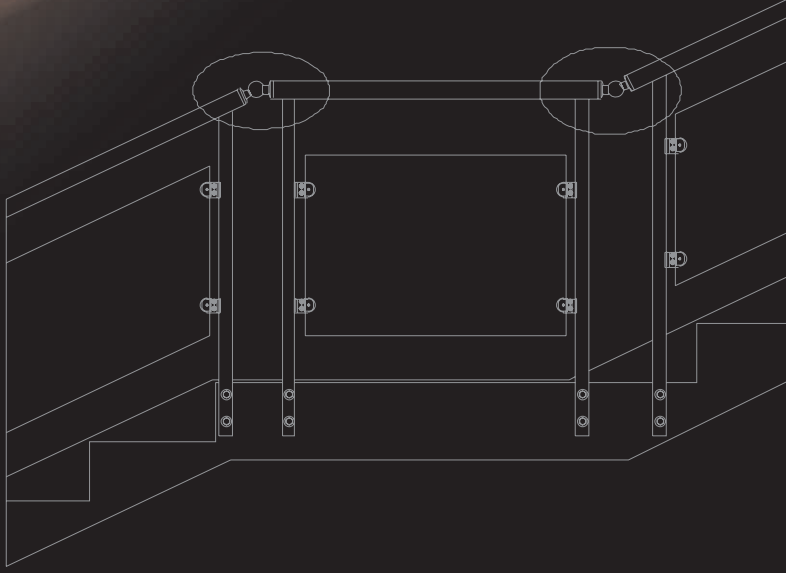


Malzeme = AISI 304-316

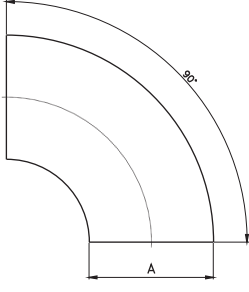


Saten - Parlak

# KÖŞE MAFSALLARI VE PATEN DİRSEKLER



**KÖŞE MAFSALLARI VE PATEN DİRSEKLER**

**PATEN DİRSEK / PD-90**


Malzeme = AISI 304

**Boru Çapları ( A )**

Ø 25

Ø 32

Ø 38

Ø 42

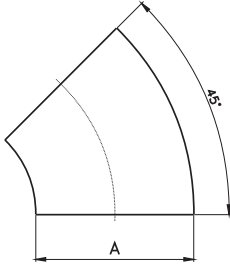
Ø 48

Ø 51

Ø 60



Saten - Parlak

**PATEN DİRSEK / PD-45**


Malzeme = AISI 304

**Boru Çapları ( A )**

Ø 25

Ø 32

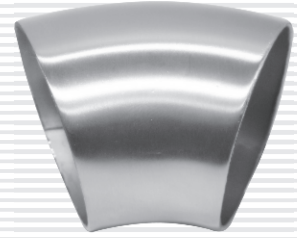
Ø 38

Ø 42

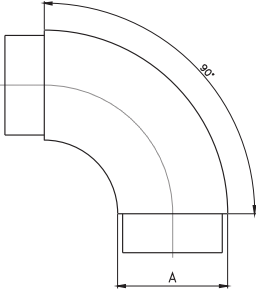
Ø 48

Ø 51

Ø 60



Saten - Parlak

**GEÇMELİ PATEN DİRSEK / GPD-90**


Malzeme = AISI 304

**Boru Çapları ( A )**

Ø 32 x 1.5

Ø 38 x 1.5

Ø 42 x 1.5

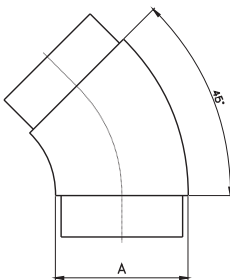
Ø 48 x 1.5

Ø 51 x 1.5

Ø 60 x 1.5



Saten - Parlak

**GEÇMELİ PATEN DİRSEK / GPD-45**


Malzeme = AISI 304

**Boru Çapları ( A )**

Ø 32 x 1.5

Ø 38 x 1.5

Ø 42 x 1.5

Ø 48 x 1.5

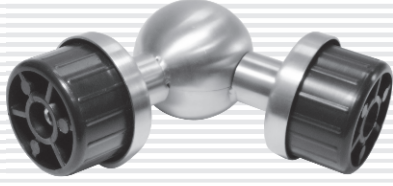
Ø 51 x 1.5

Ø 60 x 1.5



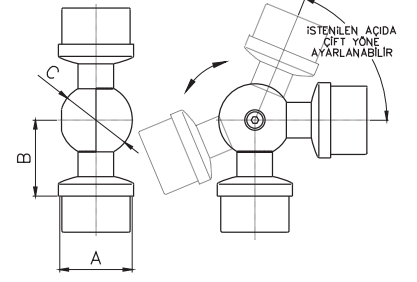
Saten - Parlak

### KÖŞE MAFSAL - KM



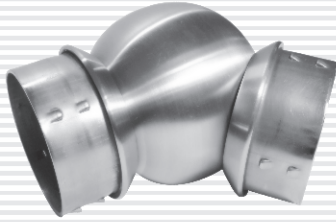
Saten - Parlak

Boru Çapları ( A )	( B )	Küre ( C )
Ø 32 x 1.5	45	32
Ø 38 x 1.5	47	42
Ø 42 x 1.5	52	42
Ø 51 x 1.5	55	51
Ø 60 x 1.5	62	60
Ø 70 x 1.5	73	70
Ø 76 x 1.5	78	76

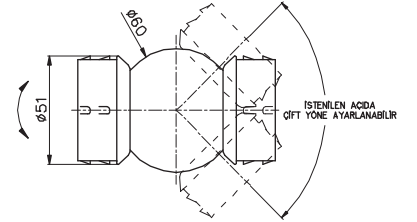


Malzeme = AISI 304

### HAREKETLİ DİRSEK / HD-51



Saten - Parlak

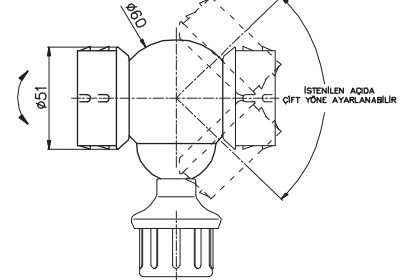


Malzeme = AISI 304-316

### HAREKETLİ DİRSEK KÖŞE / HDK-51



Saten - Parlak



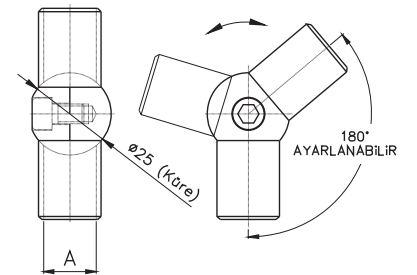
Malzeme = AISI 304-316

### KÖŞE MAFSAL / KM-16



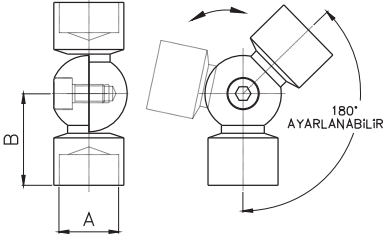
Saten - Parlak

Boru Çapları ( A )
Ø 16



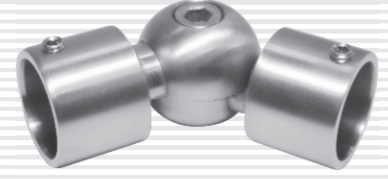
Malzeme = AISI 304-303

### KÖŞE MAFSAL - KMD



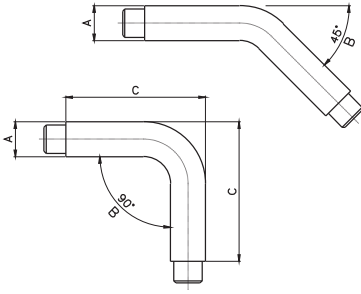
Malzeme = AISI 304-303

Boru Çapları ( A )	( B )
Ø 16	29
Ø 19	30



Saten - Parlak

### GEÇMELİ PATEN DİRSEK - GPD



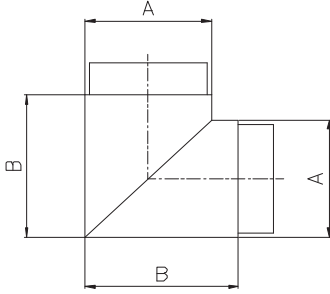
Malzeme = AISI 304

Boru Çapları ( A )	( B )	( C )
Ø 12 x 1.5	45° - 90°	60
Ø 16 x 1.5	45° - 90°	64
Ø 19 x 1.5	45° - 90°	69



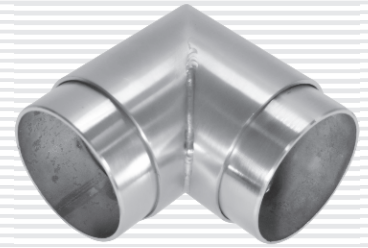
Saten - Parlak

### KAYNAKLI KÖŞE MAFSAL



Malzeme = AISI 304-316

Boru Çapları ( A )	( B )
Ø 32 x 1.5	41
Ø 38 x 1.5	47
Ø 42 x 1.5	52
Ø 51 x 1.5	62



Saten - Parlak

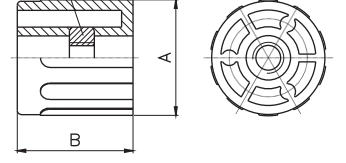
Saten - Parlak

### PLASTİK TAKOZ / PT



Boru Çapları ( A )	( B )	( C )
Ø32	30	M6 - M8
Ø38	30	M6 - M8
Ø40	30	M6 - M8
Ø42	30	M6 - M8
Ø51	34	M8 - M10
Ø60	34	M8 - M10

(C) somun  
DIN 934



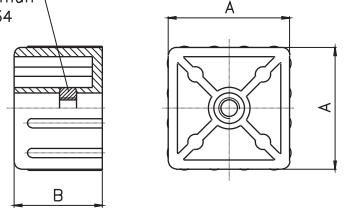
Malzeme = POLYAMİD

### PLASTİK TAKOZ / PTK



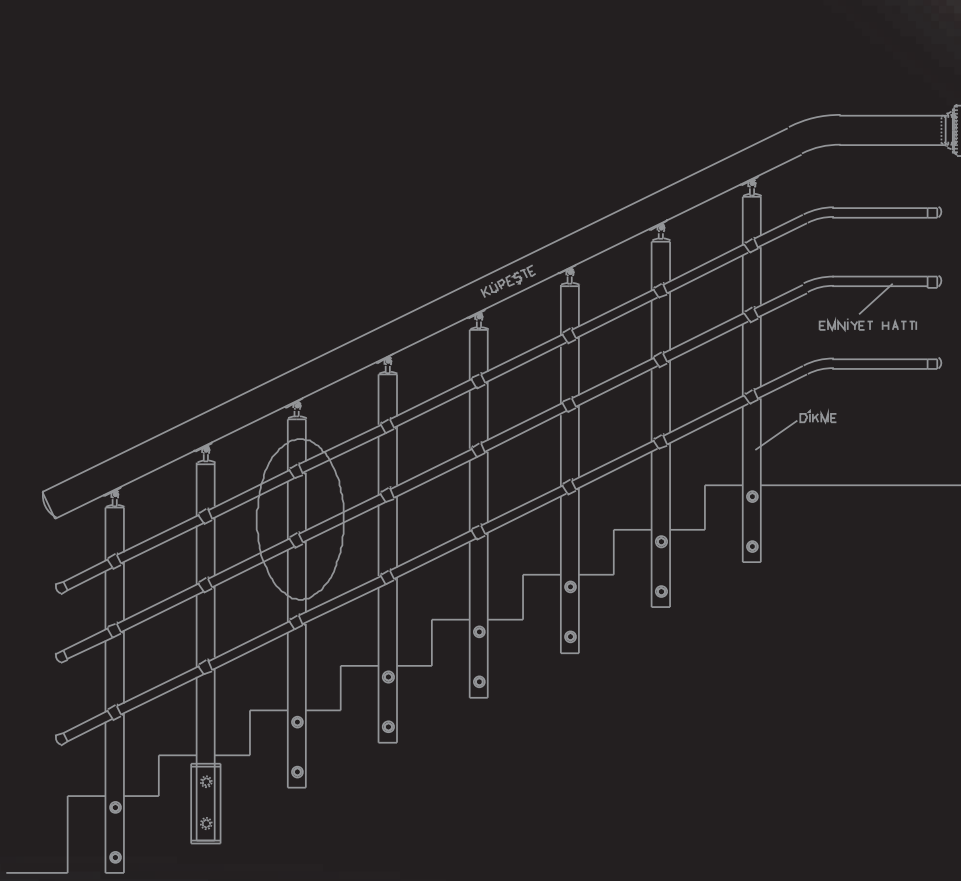
Boru Çapları ( A )	( B )	( C )
30x30 x1.5	30	M6 - M8
40x40 x1.5	30	M6 - M8
50x50 x1.5	34	M8 - M10

(C) somun  
DIN 934



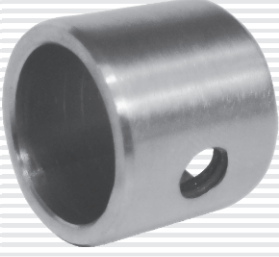
Malzeme = POLYAMİD





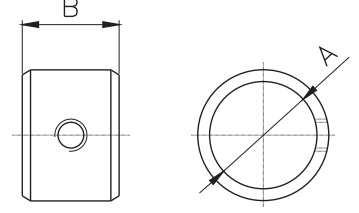
**EMNİYET HATTI  
BAĞLANTI YÜZÜKLERİ**

EMNİYET HATTI BAĞLANTI YÜZÜKLERİ

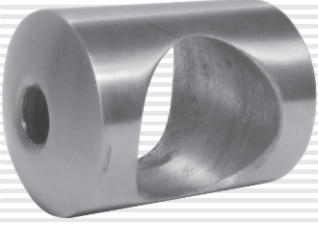
**BAĞLANTI YÜZÜK / BY-100**


Saten - Parlak

Boru Çapları ( A )	( B )
Ø16	18
Ø19	18
Ø21	18
Ø25	18
Ø32	25
Ø38	25

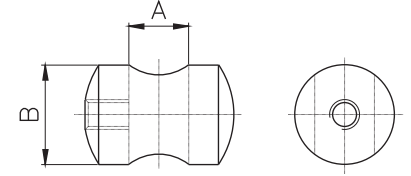


Malzeme = AISI 304

**BADEM YÜZÜK / BY-200**


Saten - Parlak

Boru Çapları ( A )	( B )
Ø8-10-12-16	20
Ø19	25

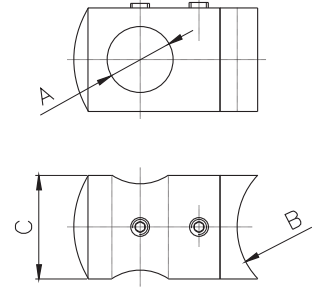


Malzeme = AISI 304-316

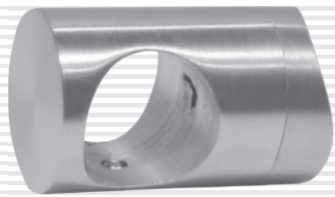
**KURT AĞIZLI BADEM YÜZÜK / BY-300**


Saten - Parlak

Boru Çapları ( A )	Kurtağızlı Ölçüleri ( B )	( C )
Ø8-10-12-16	Ø32-38-42-48-51-60	22
Ø19	Ø32-38-42-48-51-60	25

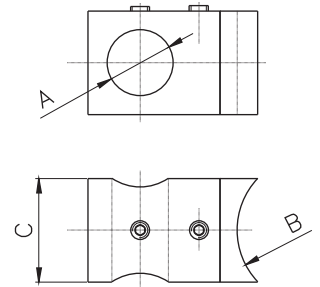


Malzeme = AISI 304-316

**DÜZ KURT AĞIZLI BADEM YÜZÜK / BY-301**


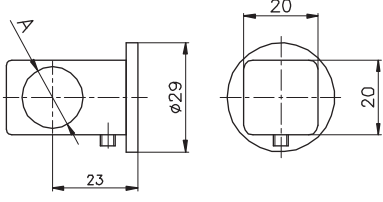
Saten - Parlak

Boru Çapları ( A )	Kurtağızlı Ölçüleri ( B )	( C )
Ø8-10-12-16	Ø32-38-42-48-51-60	22
Ø19	Ø32-38-42-48-51-60	25



Malzeme = AISI 304

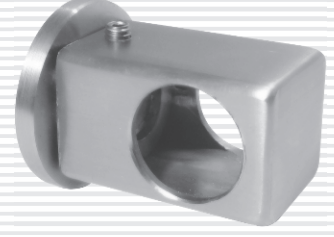
### KARE BADEM YÜZÜK / BY-302



Malzeme = AISI 304-316

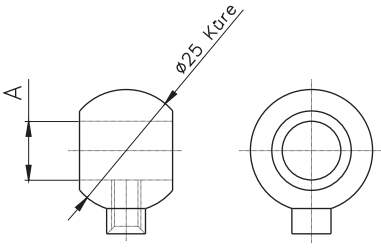
Boru Çapları ( A )

Ø 8-10-12-16



Saten - Parlak

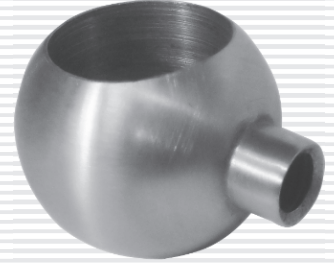
### KÜRE YÜZÜK / BY-400



Malzeme = AISI 304-316

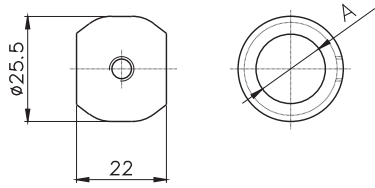
Boru Çapları ( A )

Ø 8-10-12-16



Saten - Parlak

### DEKORATİF YÜZÜK / BY-500



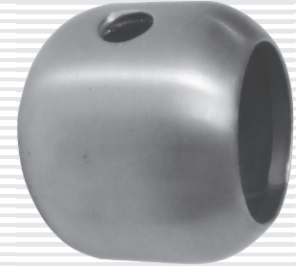
Malzeme = AISI 304-316

Boru Çapları ( A )

Ø 16

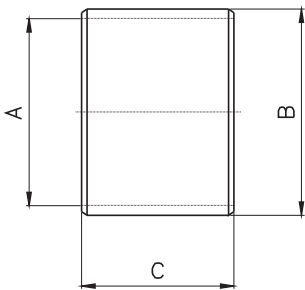
Ø 19

Ø 25



Saten - Parlak

### BİLEZİK / B



Malzeme = AISI 304

Küpeşte Çapları ( A )

Ø 16

Ø 32

Ø 38

Ø 42

Ø 48

Ø 51

Ø 60

Dikme Çapları ( B )

Ø 19.3 x 1.2

Ø 35 x 1.5

Ø 42 x 2

Ø 45 x 1.5

Ø 51 x 1.5

Ø 54 x 1.5

Ø 63 x 1.5

( C ) mm.

20-40

20-40

20-40

20-40

20-40

20-40

20-40



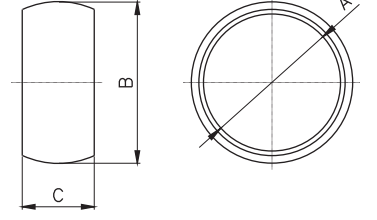
Saten - Parlak



Saten - Parlak

### DEKORATİF BİLEZİK

( A )	( B )	( C )
Ø 32	Ø 38 x 1.5	20
Ø 38	Ø 45 x 1.5	20
Ø 42	Ø 48 x 1.5	20
Ø 48	Ø 54 x 1.5	24
Ø 51	Ø 57 x 1.5	20
Ø 60	Ø 70 x 1.5	30
Ø 63	Ø 70 x 1.5	30

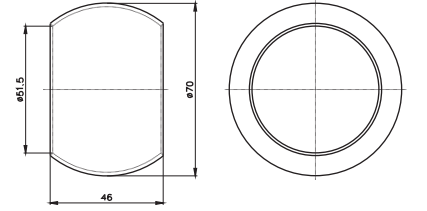


Malzeme = AISI 304



Saten - Parlak

### DEKORATİF DİKME BİLEZİĞİ - 51



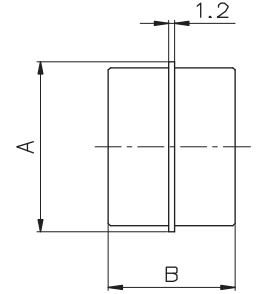
Malzeme = AISI 304



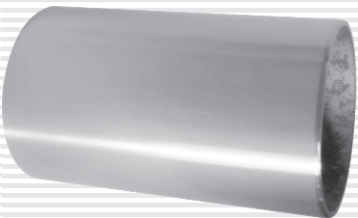
Saten - Parlak

### FATURALI MANŞON

Boru Çapları ( A )	( B )
Ø 16x1.5	20
Ø 32x1.5	23
Ø 38x1.5	25
Ø 42x1.5	27
Ø 51x1.5	30



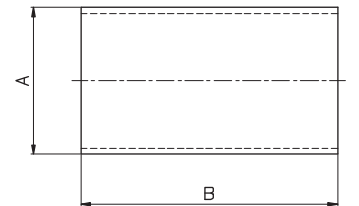
Malzeme = AISI 304



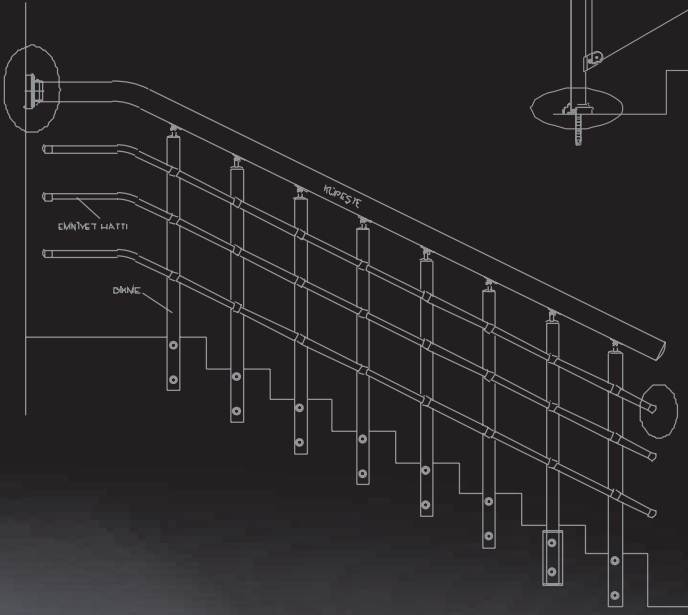
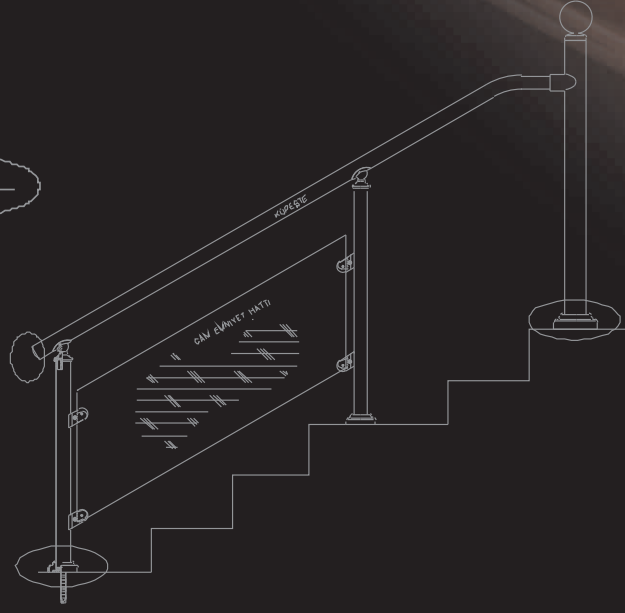
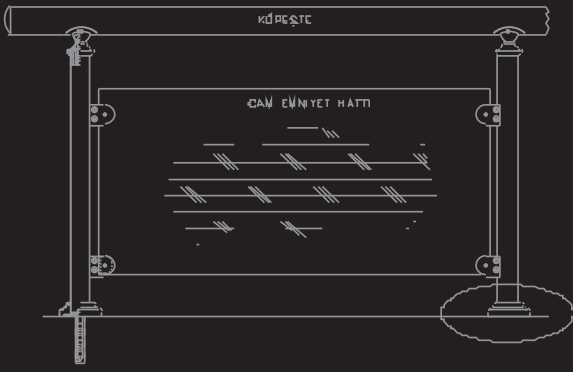
Saten - Parlak

### DÜZ MANŞON

Boru Çapları ( A )	( B )
Ø 16x1.5	45
Ø 32x1.5	60
Ø 38x1.5	65
Ø 42x1.5	70
Ø 51x1.5	80



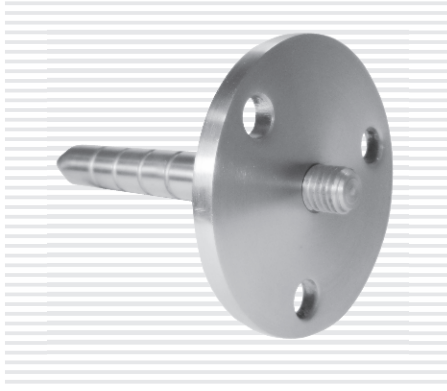
Malzeme = AISI 304-316



**ZEMİN VE DUVAR  
BAĞLANTI ELEMANLARI**

ZEMİN VE DUVAR BAĞLANTI ELEMANLARI

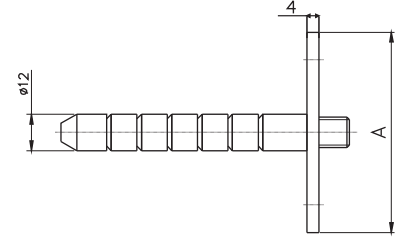
### ZEMİN BAĞLANTI ANKRAJİ / ZBA-100



#### Flanş Çapları ( A )

Ø66

Ø80



Malzeme = AISI 304

### DİKME TABAN PULU / DTP



#### Boru Çapları ( A )

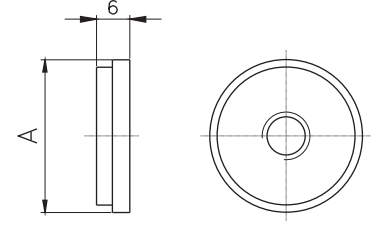
Ø32 x 1.5

Ø38 x 1.5

Ø42 x 1.5

Ø51 x 1.5

Ø60 x 1.5



Malzeme = AISI 304-303

### BİTİŞ BAĞLANTISI - BB



Saten - Parlak

#### Boru Çapları ( A )

Ø16 x 1.5

Ø25 x 1.5

Ø32 x 1.5

Ø38 x 1.5

Ø42 x 1.5

Ø48 x 1.5

Ø51 x 1.5

Ø60 x 1.5

#### ( B )

72

72

72

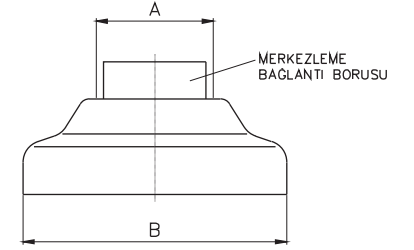
78

78

85

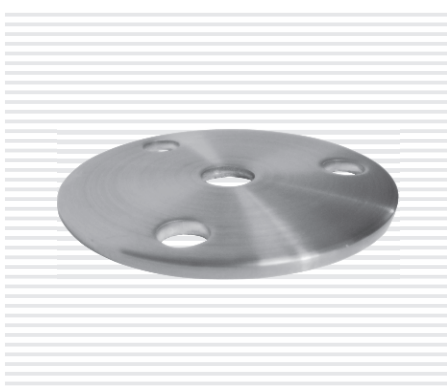
85

95



Malzeme = AISI 304-316

### FLANŞ - F



#### Flanş Çapları ( A )

Ø66

Ø80

Ø66

Ø80

#### Malzeme

PASLANMAZ

PASLANMAZ

DKP

DKP

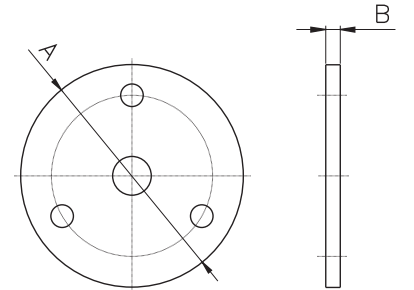
#### (B) mm.

3

3

5

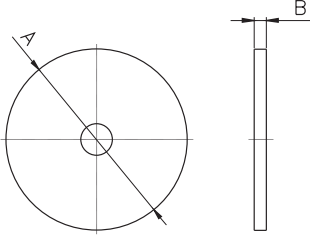
5



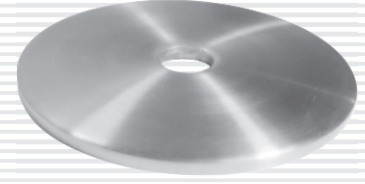
Not : İstenilen Kalınlıkta ve Ölçülerde Özel Flanş Üretilir.

Malzeme = AISI 304 / DKP

### FLANŞ - F1



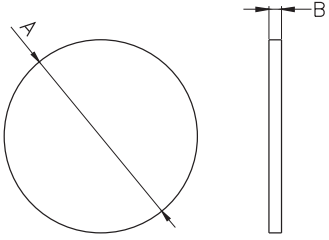
Flanş Çapları ( A )	MALZEME	( B ) mm.
Ø 66	PASLANMAZ	3
Ø 80	PASLANMAZ	3
Ø 66	DKP	5
Ø 80	DKP	5



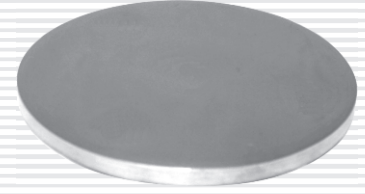
Malzeme = AISI 304 - DKP

Not : İstenilen Kalınlıkta ve Ölçülerde Özel Flanş Üretilir.

### FLANŞ - F0



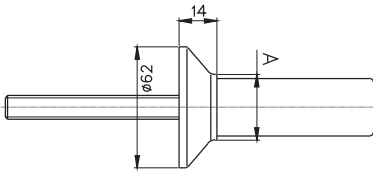
Boru Çapları ( A )	Malzeme	( B )
Ø 66	PASLANMAZ	3
Ø 80	PASLANMAZ	3
Ø 66	DKP	5
Ø 80	DKP	5



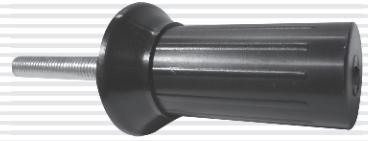
Malzeme = AISI 304 - DKP

Not : İstenilen Kalınlıkta ve Ölçülerde Özel Flanş Üretilir.

### SAPLAMALI PLASTİK ANKRAJ - SPA

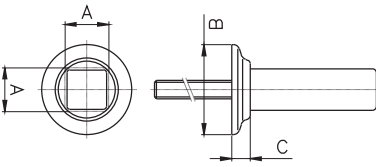


Boru Çapları ( A )
Ø 32 x 1.5
Ø 38 x 1.5
Ø 42 x 1.5
Ø 51 x 1.5

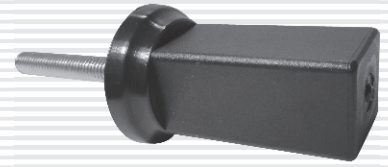


Malzeme = PLASTİK / ÇELİK

### SAPLAMALI PLASTİK ANKRAJ (KARE)- SPAK

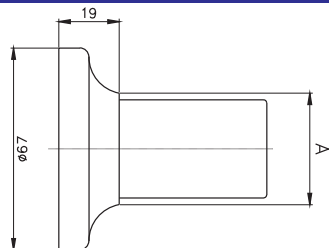


Profil Ölçüleri ( A )	( B )	( C )
30x30 x1.5	59	12
40x40 x1.5	61	16

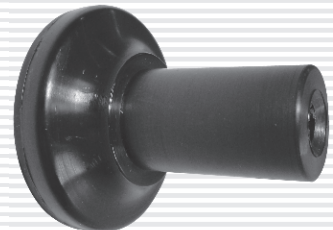


Malzeme = PLASTİK / ÇELİK

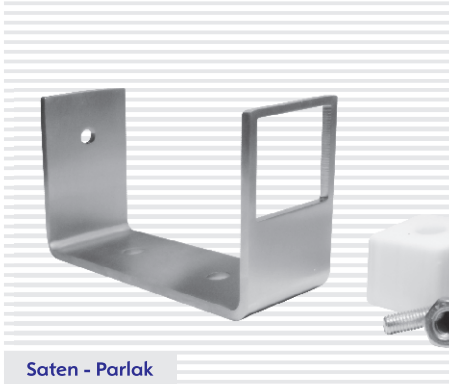
### SAPLAMASIZ PLASTİK ANKRAJ - PA



Boru Çapları ( A )
Ø 32 x 1.5
Ø 38 x 1.5
Ø 42 x 1.5

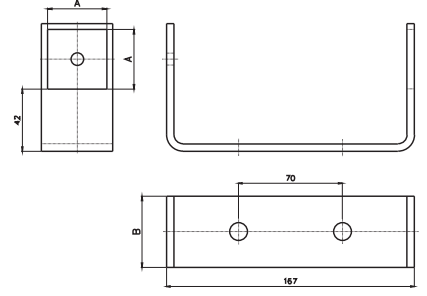


Malzeme = PLASTİK

**YAN ANKRAJ BAĞLANTI ELEMANI KARE / YAK-100**


Saten - Parlak

Boru Çapları ( A )	( B )
30 x 30	38
40 x 40	48



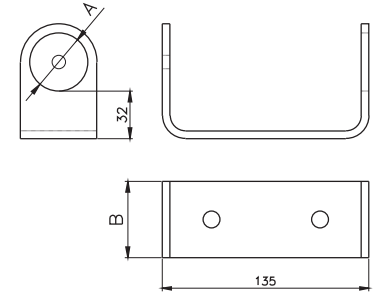
Malzeme = AISI 304-316

Kalınlık = 5 mm.

**YAN ANKRAJ BAĞLANTI ELEMANI / YA-100**


Saten - Parlak

Boru Çapları ( A )	( B )
Ø32 x 1.5	44
Ø38 x 1.5	50
Ø42 x 1.5	54
Ø51 x 1.5	63



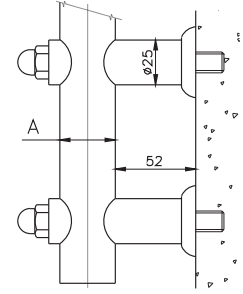
Malzeme = AISI 304-316

Kalınlık = 5 mm.

**KURT AĞIZLI BORU YAN ANKRAJ - YA-200**


Saten - Parlak

Boru Çapları ( A )
Ø32-38-42-48-51-60

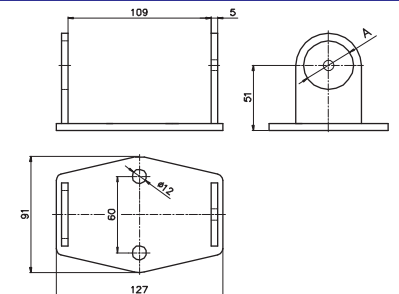


Malzeme = AISI 304-316

**YAN ANKRAJ BAĞLANTI ELEMANI / YA-300**


Saten - Parlak

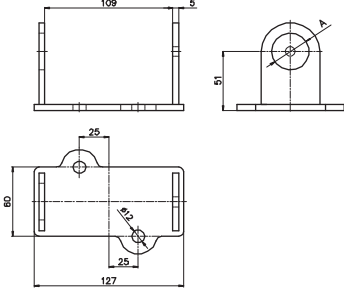
Boru Çapları ( A )
Ø32 x 1.5
Ø38 x 1.5
Ø42 x 1.5
Ø51 x 1.5



Malzeme = AISI 304-316

Kalınlık = 5 mm.



**YAN ANKRAJ BAĞLANTI ELEMANI / YA-400**


Malzeme = AISI 304-316

Kalınlık = 5 mm.

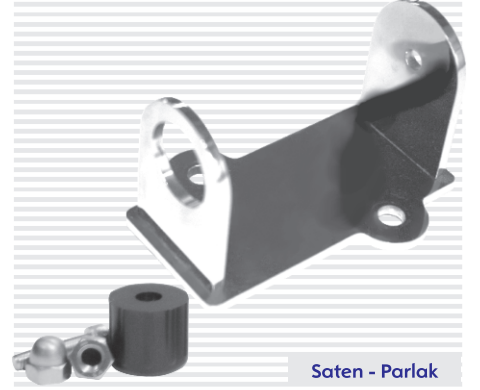
**Boru Çapları ( A )**

Ø32 x 1.5

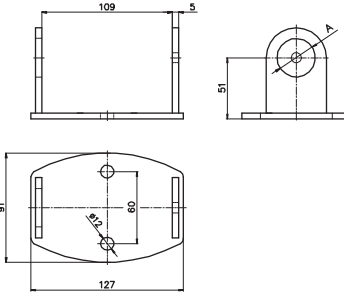
Ø38 x 1.5

Ø42 x 1.5

Ø51 x 1.5



Saten - Parlak

**YAN ANKRAJ BAĞLANTI ELEMANI / YA-500**


Malzeme = AISI 304-316

Kalınlık = 5 mm.

**Boru Çapları ( A )**

Ø32 x 1.5

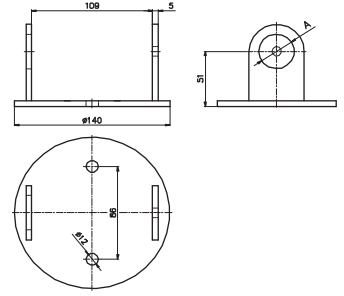
Ø38 x 1.5

Ø42 x 1.5

Ø51 x 1.5



Saten - Parlak

**YAN ANKRAJ BAĞLANTI ELEMANI / YA-600**


Malzeme = AISI 304-316

Kalınlık = 5 mm.

**Boru Çapları ( A )**

Ø32 x 1.5

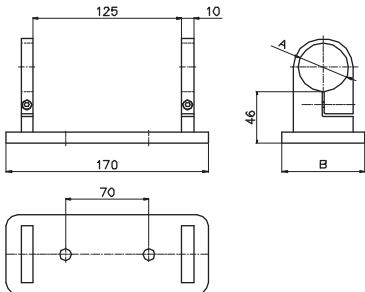
Ø38 x 1.5

Ø42 x 1.5

Ø51 x 1.5



Saten - Parlak

**YAN ANKRAJ BAĞLANTI ELEMANI / YA-700**


Malzeme = AISI 304-316

**Boru Çapları ( A )**

Ø32

Ø38

Ø42

Ø51

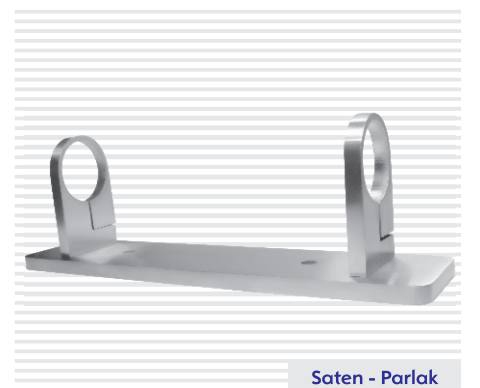
**( B )**

59

65

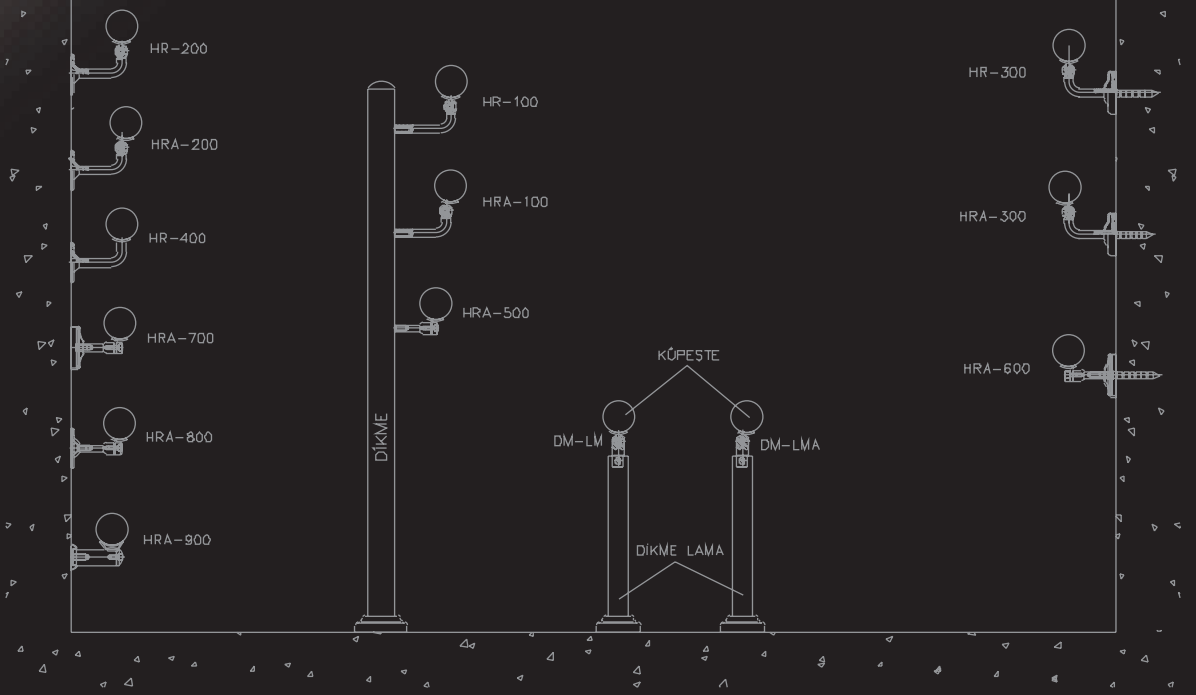
70

78



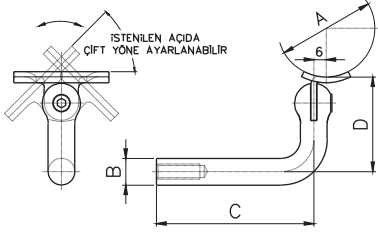
Saten - Parlak

# KOLÇAKLAR



**KOLÇAKLAR**

### DİKME KOLÇAĞI / HRA-100



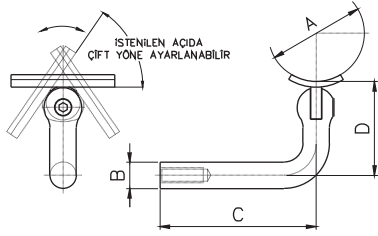
Küpeşte Çapları (A)	Kolçak Çapları (B)	(C)	(D)
Ø 32-38-42-48 Ø 51-60	Ø 12	58-72	45
Ø 32-38-42-48 Ø 51-60	Ø 14	70-90	50



Saten - Parlak

Malzeme = AISI 303-304-316

### DİKME KOLÇAĞI / HR-100



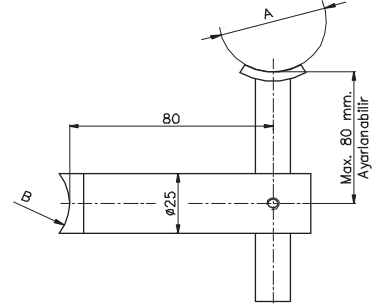
Küpeşte Çapları (A)	Kolçak Çapları (B)	(C)	(D)
Ø 32-38-42-48 Ø 51-60	Ø 12	58-72	45
Ø 32-38-42-48 Ø 51-60	Ø 14	70-90	50



Saten - Parlak

Malzeme = AISI 303-304-316

### AYARLI DİKME KOLÇAĞI / HR-101



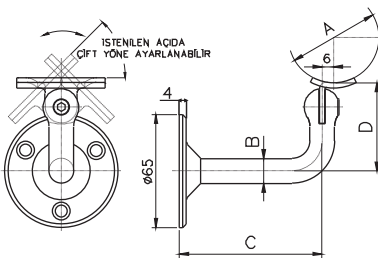
Küpeşte Çapları (A)	Dikme Çapları (B)
Ø 32-38-42-48-51-60	Ø 32
Ø 38-42-48-51-60	Ø 38
Ø 42-48-51-60	Ø 42
Ø 48-51-60	Ø 48
Ø 48-51-60	Ø 51



Saten - Parlak

Malzeme = AISI 304-316

### FLANŞLI DUVAR KOLÇAĞI / HRA-200



Küpeşte Çapları (A)	Kolçak Çapları (B)	(C)	(D)
Ø 32-38-42-48 Ø 51-60	Ø 12	69-83	45
Ø 32-38-42-48 Ø 51-60	Ø 14	81-101	50



Saten - Parlak

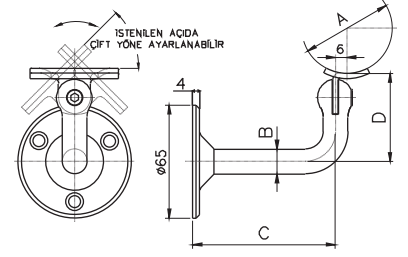
Malzeme = AISI 303-304-316

### FLANŞLI DUVAR KOLÇAĞI / HRA-201



Saten - Parlak

Küpeşte Çapları (A)	Kolçak Çapları (B)	(C)	(D)
Ø 32-38-42-48 Ø 51-60	Ø 12	69-83	45
Ø 32-38-42-48 Ø 51-60	Ø 14	81-101	50



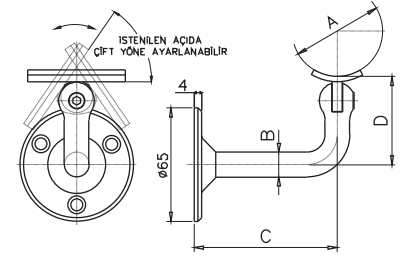
Malzeme = AISI 303-304-316

### FLANŞLI DUVAR KOLÇAĞI / HR-200



Saten - Parlak

Küpeşte Çapları (A)	Kolçak Çapları (B)	(C)	(D)
Ø 32-38-42-48 Ø 51-60	Ø 12	69-83	45
Ø 32-38-42-48 Ø 51-60	Ø 14	81-101	50



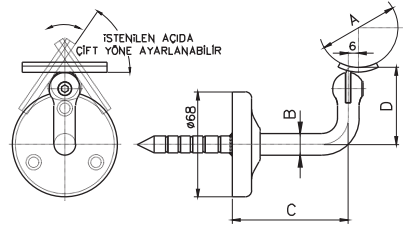
Malzeme = AISI 303-304-316

### ANKRAJLI DUVAR KOLÇAĞI / HRA-300



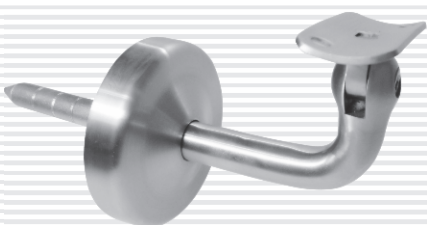
Saten - Parlak

Küpeşte Çapları (A)	Kolçak Çapları (B)	(C)	(D)
Ø 32-38-42-48 Ø 51-60	Ø 12	63-77	45
Ø 32-38-42-48 Ø 51-60	Ø 14	75-95	50



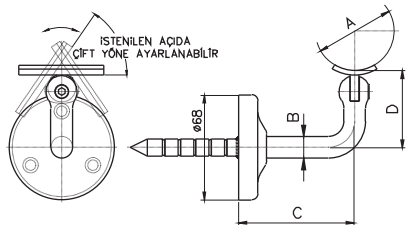
Malzeme = AISI 303-304-316

### ANKRAJLI DUVAR KOLÇAĞI / HR-300

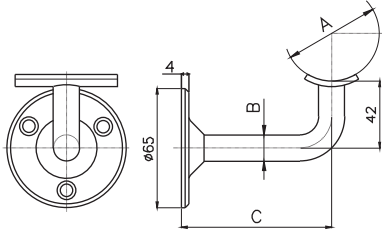


Saten - Parlak

Küpeşte Çapları (A)	Kolçak Çapları (B)	(C)	(D)
Ø 32-38-42-48 Ø 51-60	Ø 12	63-77	45
Ø 32-38-42-48 Ø 51-60	Ø 14	75-95	50



Malzeme = AISI 303-304-316

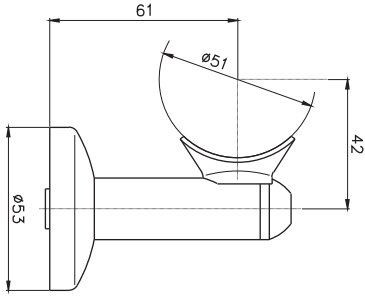
**SABİT DUVAR KOLÇAĞI / HR-400**


Küpeşte Çapları (A)	Kolçak Çapları (B)	(C)
Ø 32-38-42-48-51-60	Ø 12	64
Ø 32-38-42-48 51-60	Ø 14	69

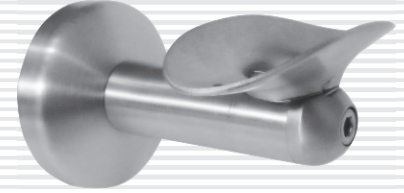
Malzeme = AISI 303-304-316



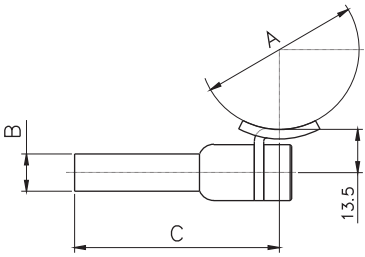
Saten - Parlak

**KOLÇAK / HR-500**


Malzeme = AISI 303-304-316



Saten - Parlak

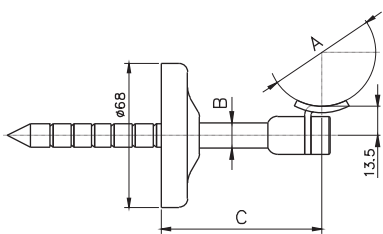
**DİKME KOLÇAĞI / HRA-500**


Malzeme = AISI 303-304-316

Küpeşte Çapları (A)	Kolçak Çapları (B)	(C)
Ø 32-38-42-48-51-60	Ø 12	65

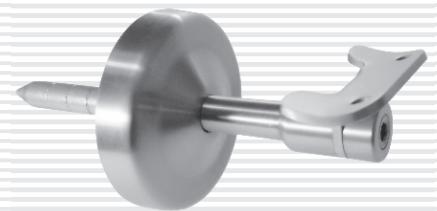


Saten - Parlak

**ANKRAJLI DUVAR KOLÇAĞI / HRA-600**


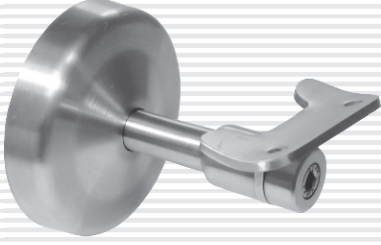
Malzeme = AISI 303-304-316

Küpeşte Çapları (A)	Kolçak Çapları (B)	(C)
Ø 32-38-42-48-51-60	Ø 12	75.5



Saten - Parlak

### FLANŞLI DUVAR KOLÇAĞI / HRA-700



Saten - Parlak

Küpeşte Çapları (A)

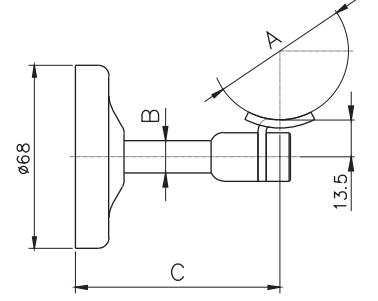
Ø32-38-42-48-51-60

Kolçak Çapları (B)

Ø12

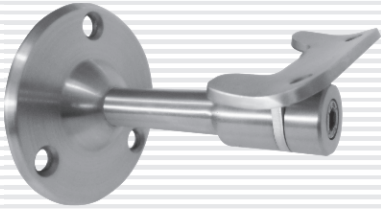
(C)

75.5



Malzeme = AISI 303-304-316

### FLANŞLI DUVAR KOLÇAĞI / HRA-800



Saten - Parlak

Küpeşte Çapları (A)

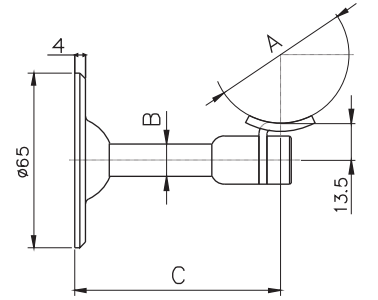
Ø32-38-42-48-51-60

Kolçak Çapları (B)

Ø12

(C)

76

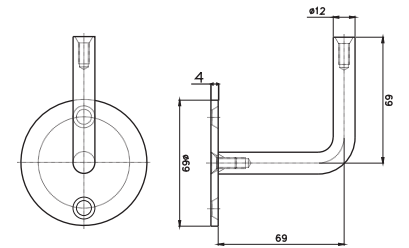


Malzeme = AISI 303-304-316

### KOLÇAK / HR-800

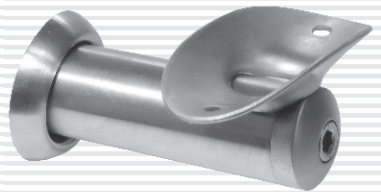


Saten - Parlak



Malzeme = AISI 303-304-316

### DUVAR KOLÇAĞI / HR-900



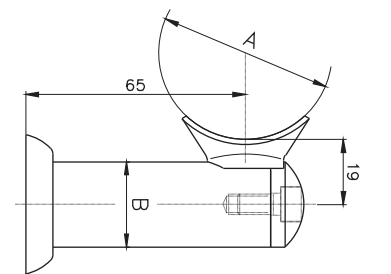
Saten - Parlak

Küpeşte Çapları (A)

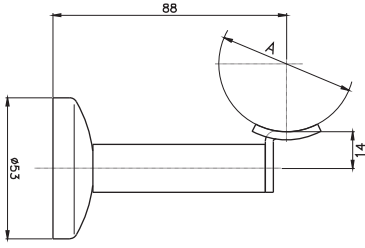
Ø51

Kolçak Çapları (B)

Ø25



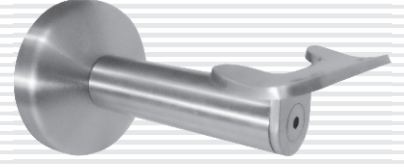
Malzeme = AISI 303-304-316

**KOLÇAK / HRA-1000**


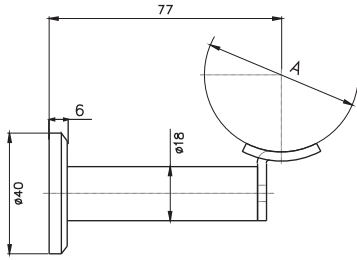
Malzeme = AISI 303-304-316

Küpeşte Çapları (A)

Ø32-38-42-48-51-60



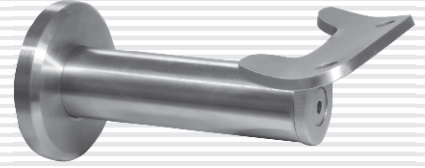
Saten - Parlak

**KOLÇAK / HRA-1100**


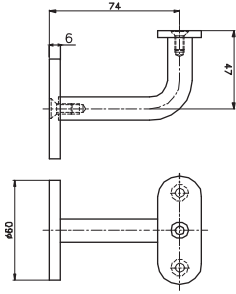
Malzeme = AISI 303-304-316

Küpeşte Çapları (A)

Ø32-38-42-48-51-60



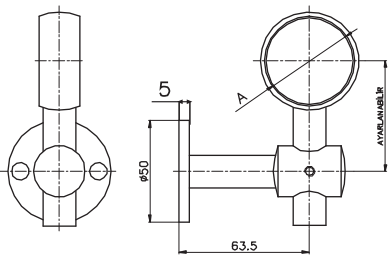
Saten - Parlak

**DUVAR KOLÇAĞI / HR-1200**


Malzeme = AISI 304-316



Saten - Parlak

**DUVAR KOLÇAĞI / HR-1300**


Malzeme = AISI 304-316

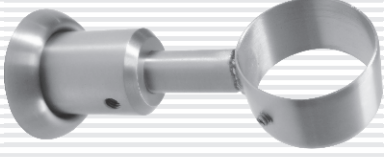
Küpeşte Çapları (A)

Ø32-38-42-48-51-60



Saten - Parlak

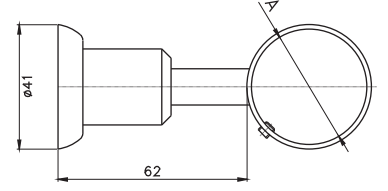
### TUTAMAK DÜZ - TD



Saten - Parlak

Boru Çapları ( A )

Ø 32-38-42-48-51-60



Malzeme = AISI 303-304-316

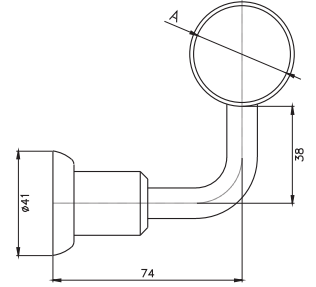
### TUTAMAK AÇILI - TA



Saten - Parlak

Boru Çapları ( A )

Ø 32-38-42-48-51-60



Malzeme = AISI 303-304-316

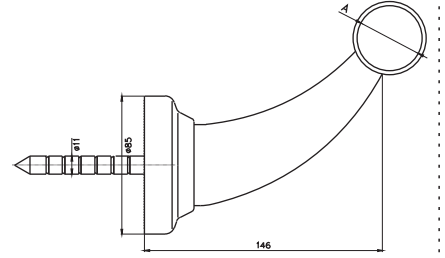
### SAPLAMALI BAR TEKMELİĞİ - BTS



Saten - Parlak

Boru Çapları ( A )

Ø 32-38-42-48-51-60



Malzeme = AISI 304-316

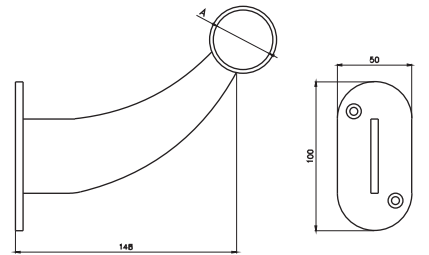
### BAR TEKMELİĞİ - BT



Saten - Parlak

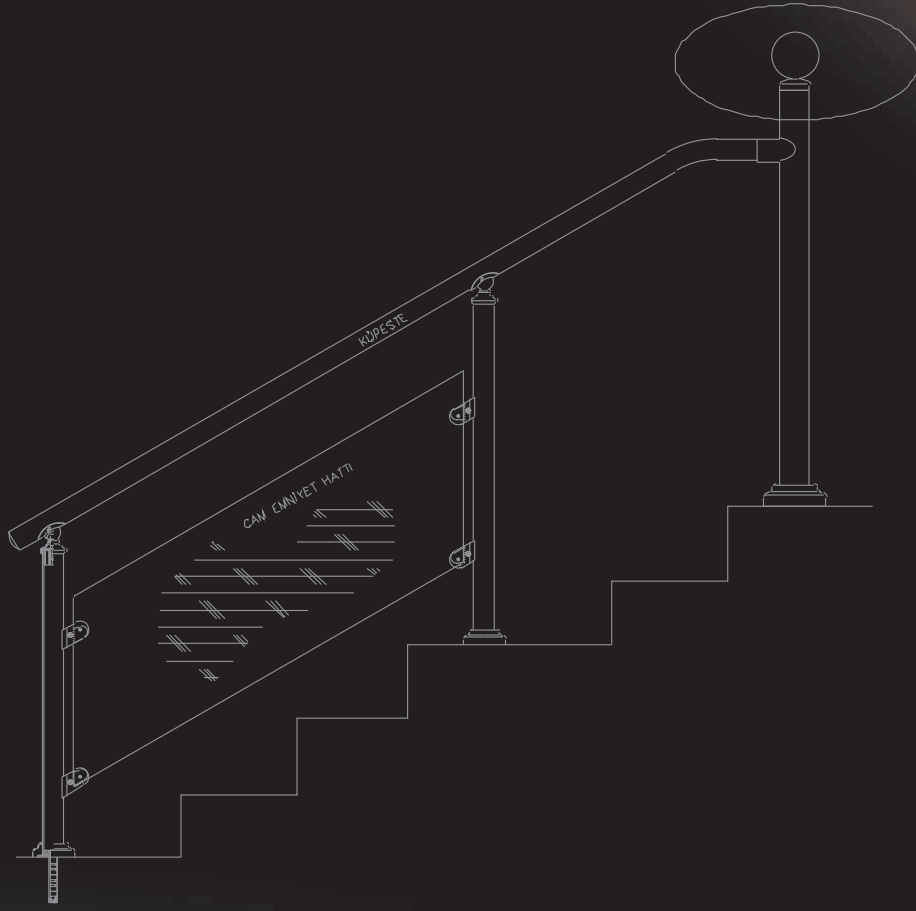
Boru Çapları ( A )

Ø 32-38-42-48-51-60



Malzeme = AISI 304-316





**DİKME BABALARI VE BAĞLANTI ELEMANLARI**

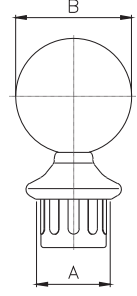
DİKME BABALARI VE BAĞLANTI ELEMANLARI

### DİKME BABASI -DB



Saten - Parlak

Boru Çapları ( A )	Metal Top Çapı (B)
Ø 32-38	Ø 38
Ø 32-38-42	Ø 42
Ø 38-42-51	Ø 51
Ø 51-60	Ø 60 - Ø 70
Ø 51-60-76	Ø 76
Ø 60-76	Ø 90
Ø 100	Ø 150



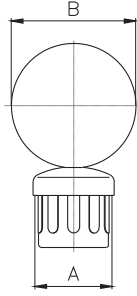
Malzeme = AISI 304-316-Plastik

### DİKME BABASI / DB-100



Saten - Parlak

Boru Çapları ( A )	Metal Top Çapı (B)
Ø 32-38	Ø 38
Ø 32-38-42	Ø 42
Ø 38-42-51	Ø 51
Ø 51-60	Ø 60 - Ø 70
Ø 51-60-76	Ø 76
Ø 60-76	Ø 90
Ø 100	Ø 150



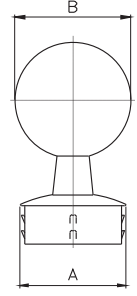
Malzeme = AISI 304-316-Plastik

### DİKME BABASI / DB-200



Saten - Parlak

Boru Çapları ( A )	Metal Top Çapı (B)
Ø 32-38	Ø 38
Ø 32-38-42	Ø 42
Ø 38-42-51	Ø 51
Ø 51-60	Ø 60 - Ø 70
Ø 51-60-76	Ø 76
Ø 60-76	Ø 90



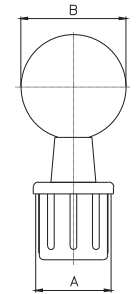
Malzeme = AISI 304-316

### KARE DİKME BABASI / KDB

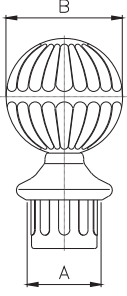


Saten - Parlak

Boru Çapları ( A )	Metal Top Çapı (B)
30x30	Ø 38
30x30	Ø 42
40x40	Ø 51
40x40	Ø 60
40x40 - 50x50	Ø 70
40x40 - 50x50	Ø 76
40x40 - 50x50	Ø 90



Malzeme = AISI 304-316-Plastik

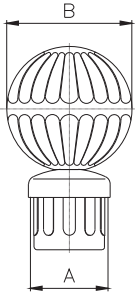
**DESENLİ DİKME BABASI - DDB**


Malzeme = AISI 304-316-Plastik

Boru Çapları ( A )	Metal Top Çapı (B)
Ø38	Ø72
Ø42	Ø72
Ø51	Ø72
Ø60	Ø72



Saten - Parlak

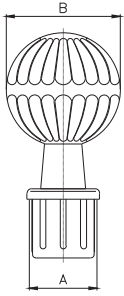
**DESENLİ DİKME BABASI - DDBG**


Malzeme = AISI 304-316-Plastik

Boru Çapları ( A )	Metal Top Çapı (B)
Ø38	Ø72
Ø42	Ø72
Ø51	Ø72
Ø60	Ø72



Saten - Parlak

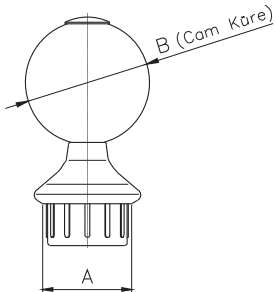
**DESENLİ DİKME BABASI KARE - KDDB**


Malzeme = AISI 304-316-Plastik

Profil Ölçüleri ( A )	Metal Top Çapı (B)
30x30 x1.5	Ø72
40x40 x1.5	Ø72
50x50 x1.5	Ø72



Saten - Parlak

**PLEKSİ DİKME BABASI - PDB**


Malzeme = AISI 304-Plastik

Boru Çapları ( A )	Cam Küre Çapı (B)
Ø42 x 1.5	Ø60
Ø51 x 1.5	Ø60
Ø60 x 1.5	Ø60
Ø42 x 1.5	Ø60
Ø51 x 1.5	Ø60
Ø60 x 1.5	Ø60



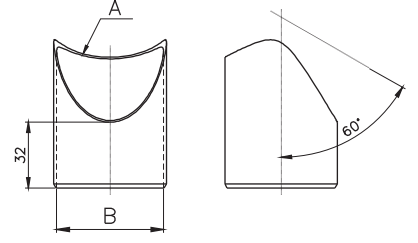
Saten - Parlak

### AÇILI BABA BAĞLANTISI / ABB-01



Saten - Parlak

Baba Dikme Ölçüsü (A)	Boru Çapları (B)
Ø 32- (Kurtağzı)	Ø 32
Ø 38- (Kurtağzı)	Ø 38
Ø 42- (Kurtağzı)	Ø 42
Ø 51- (Kurtağzı)	Ø 51
Ø 60- (Kurtağzı)	Ø 51
Ø 76- (Kurtağzı)	Ø 51
Ø 60- (Kurtağzı)	Ø 60
Ø 76- (Kurtağzı)	Ø 60
Ø 90- (Kurtağzı)	Ø 60



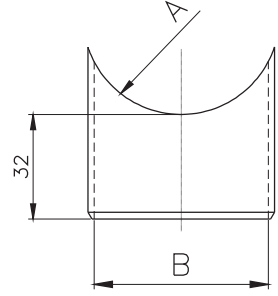
Malzeme = AISI 304

### DÜZ BABA BAĞLANTISI / DBB-01

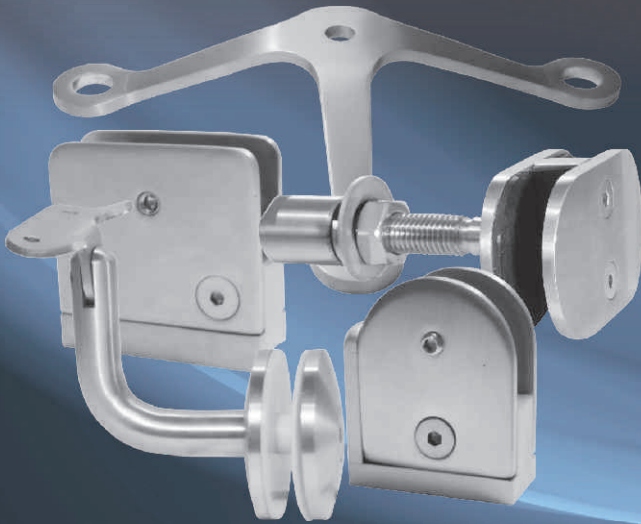
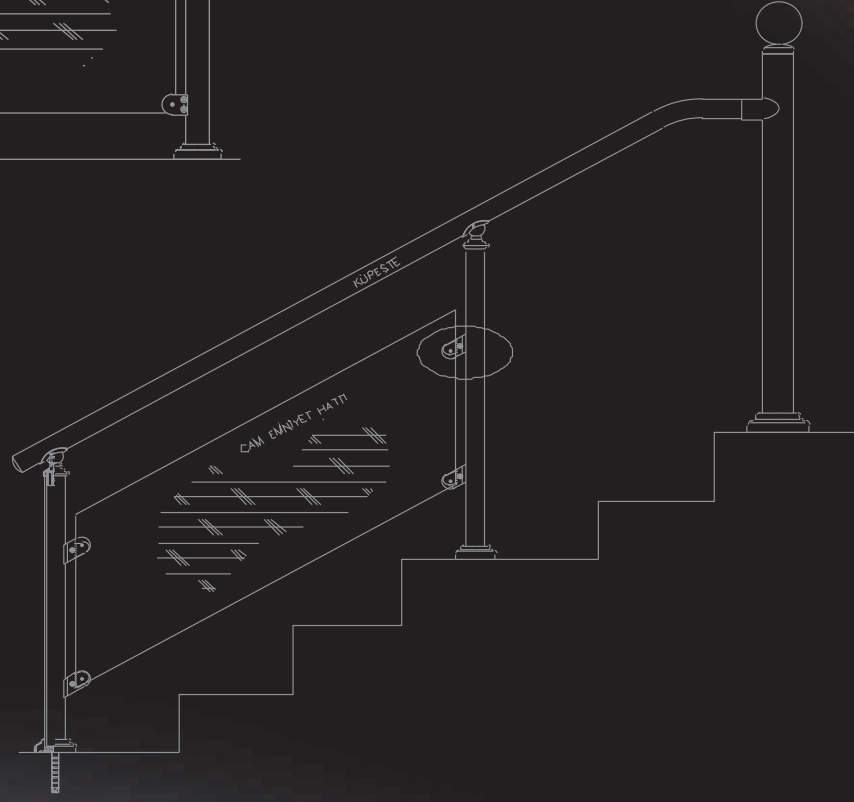
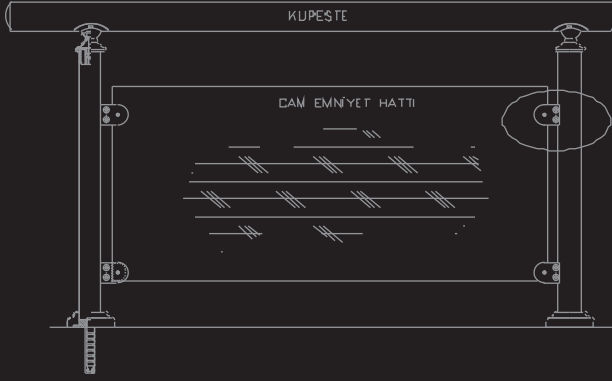


Saten - Parlak

Baba Dikme Ölçüsü (A)	Boru Çapları (B)
Ø 32- (Kurtağzı)	Ø 32
Ø 38- (Kurtağzı)	Ø 38
Ø 42- (Kurtağzı)	Ø 42
Ø 51- (Kurtağzı)	Ø 51
Ø 60- (Kurtağzı)	Ø 51
Ø 76- (Kurtağzı)	Ø 51
Ø 60- (Kurtağzı)	Ø 60
Ø 76- (Kurtağzı)	Ø 60
Ø 90- (Kurtağzı)	Ø 60



Malzeme = AISI 304



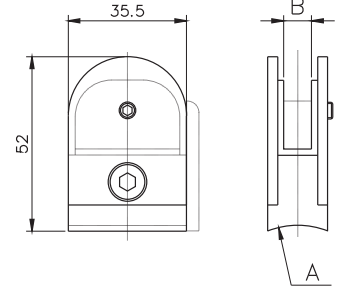
## CAM TUTUCULARI VE BAĞLANTI AKSESUARLARI



Saten - Parlak

### CAM TUTUCU (8-10 mm Cama) / CK-100

Dikme Kurtağızı ölçüleri (A)	Cam Ölçüsü (B)
Ø32-38-42-51-60	8-10 mm.



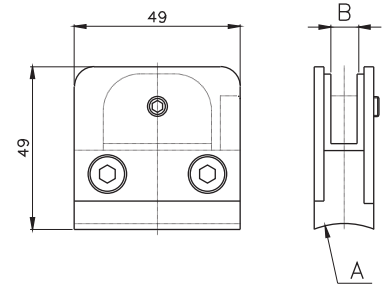
Malzeme = AISI 304-PLASTİK



Saten - Parlak

### CAM TUTUCU (8-10 mm Cama) / CK-200

Dikme Kurtağızı ölçüleri (A)	Cam Ölçüsü (B)
Ø32-38-42-51-60	8-10 mm.



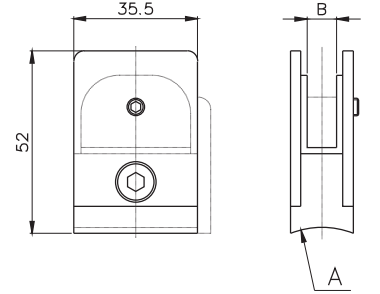
Malzeme = AISI 304-PLASTİK



Saten - Parlak

### CAM TUTUCU (8-10 mm Cama) / CK-300

Dikme Kurtağızı ölçüleri (A)	Cam Ölçüsü (B)
Ø32-38-42-51-60	8-10 mm.



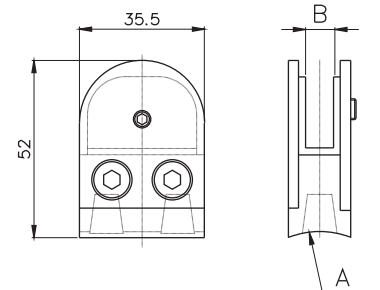
Malzeme = AISI 304-PLASTİK



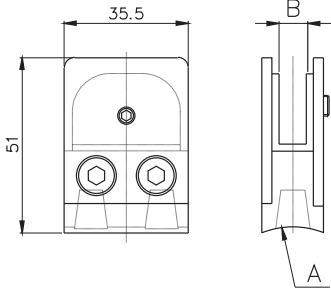
Saten - Parlak

### OVAL CAM TUTUCU (8-10 mm Cama) / DCK-200

Dikme Kurtağızı ölçüleri (A)	Cam Ölçüsü (B)
Ø32-38-42-51-60	8-10 mm.



Malzeme = AISI 304-316

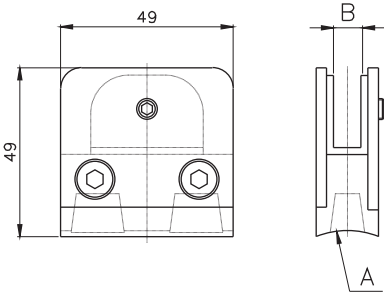
**DÜZ CAM TUTUCU (8-10 mm Cama) / DCK-300**


Dikme Kurtağı ölçüleri (A)	Cam Ölçüsü (B)
Ø32-38-42-51-60	8-10 mm.

Malzeme = AISI 304-316



Saten - Parlak

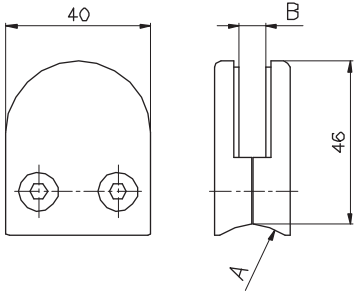
**49x49 CAM TUTUCU (8-10 mm Cama) / DCK-400**


Dikme Kurtağı ölçüleri (A)	Cam Ölçüsü (B)
Ø32-38-42-51-60	8-10 mm.

Malzeme = AISI 304-316

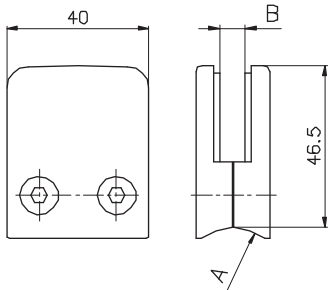


Saten - Parlak

**OVAL CAM TUTUCU (8 mm Cama) / DCK-600**


Dikme Kurtağı ölçüleri (A)	Cam Ölçüsü (B)
Ø32-38-42-51-60	8-10 mm.

Malzeme = AISI 304-316


**50x40 CAM TUTUCU (8 mm Cama) / DCK-700**


Dikme Kurtağı ölçüleri (A)	Cam Ölçüsü (B)
Ø32-38-42-51-60	8-10 mm.

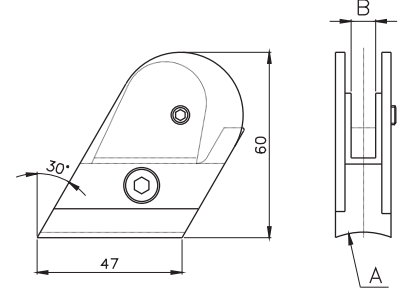
Malzeme = AISI 304-316



**AÇILI CAM TUTUCU (8 mm Cama) / ACK-100**


Saten - Parlak

Dikme Kurtağzı ölçüleri (A)	Cam Ölçüsü (B)
Ø32-38-42-51-60	8 mm.

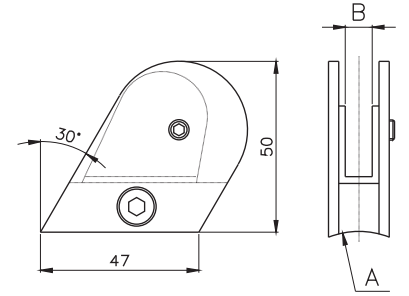


Malzeme = AISI 304-PLASTİK

**AÇILI CAM TUTUCU(8 mm Cama) / DACK-500**


Saten - Parlak

Dikme Kurtağzı ölçüleri (A)	Cam Ölçüsü (B)
Ø32-38-42-51-60	8 mm.

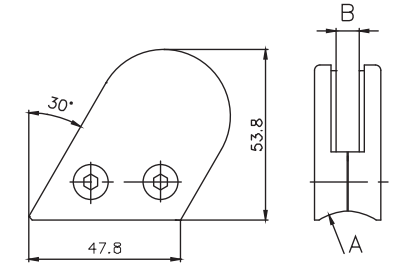


Malzeme = AISI 304-316

**AÇILI CAM TUTUCU(8 mm Cama) / DACK-800**

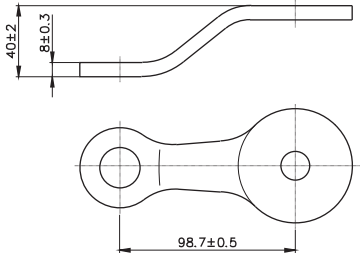

Saten - Parlak

Dikme Kurtağzı ölçüleri (A)	Cam Ölçüsü (B)
Ø32-38-42-51-60	8 mm.



Malzeme = AISI 304-316



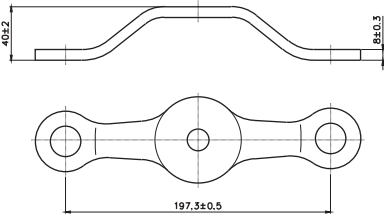
**SPIDER 1'Lİ / SPT-1**


Malzeme = AISI 304-316

Kalınlık = 8 mm.



Saten - Parlak

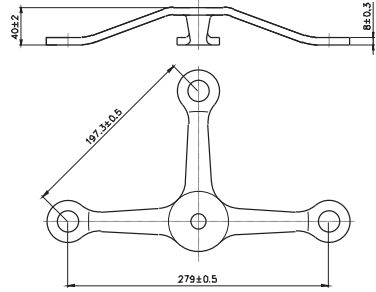
**SPIDER 2'Lİ / SPT-2**


Malzeme = AISI 304-316

Kalınlık = 8 mm.



Saten - Parlak

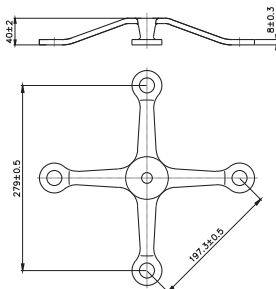
**SPIDER 3'LÜ / SPT-3**


Malzeme = AISI 304-316

Kalınlık = 8 mm.



Saten - Parlak

**SPIDER 4'LÜ / SPT-4**


Malzeme = AISI 304-316

Kalınlık = 8 mm.

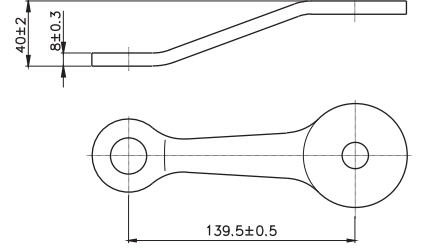


Saten - Parlak

**SPIDER 1'Lİ UZUN / SPT-U1**



Saten - Parlak



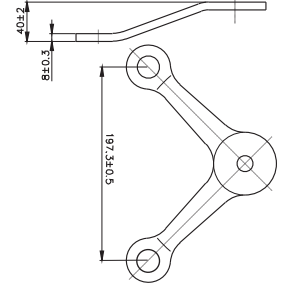
Malzeme = AISI 304-316

Kalınlık = 8 mm.

**SPIDER 2'Lİ V / SPT-V**



Saten - Parlak



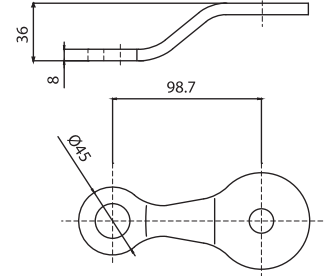
Malzeme = AISI 304-316

Kalınlık = 8 mm.

**A TİPİ SPIDER 1'Lİ UZUN / SPTA-U1**



Saten - Parlak



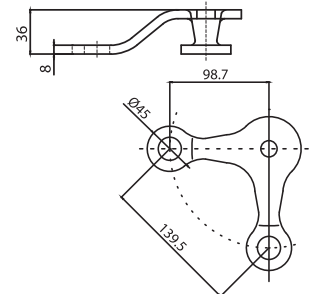
Malzeme = AISI 304-316

Kalınlık = 8 mm.

**A TİPİ SPIDER 2'Lİ V / SPTA-V**



Saten - Parlak

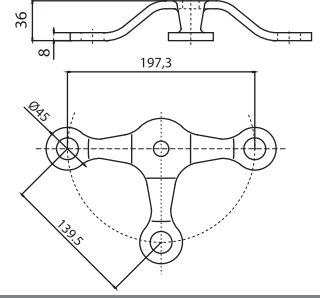


Malzeme = AISI 304-316

Kalınlık = 8 mm.

**A TİPİ SPIDER 3'LÜ / SPTA-3**


Saten - Parlak

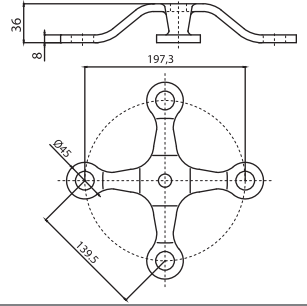


Malzeme = AISI 304-316

Kalınlık = 8 mm.

**A TİPİ SPIDER 4'LÜ / SPTA-4**


Saten - Parlak

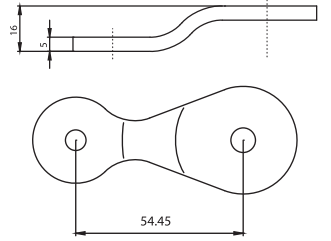


Malzeme = AISI 304-316

Kalınlık = 8 mm.

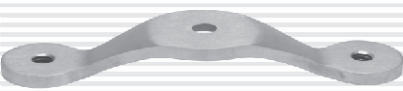
**B TİPİ SPIDER 1'Lİ / SPTB-1**


Saten - Parlak

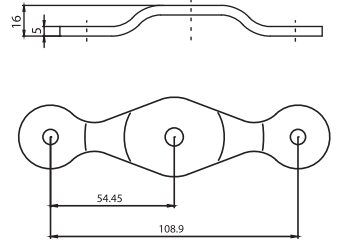


Malzeme = AISI 304-316

Kalınlık = 5 mm.

**B TİPİ SPIDER 2'Lİ / SPTB-2**


Saten - Parlak



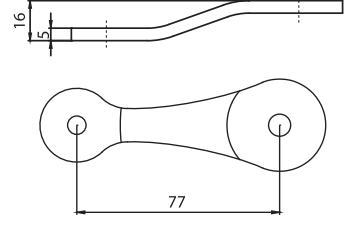
Malzeme = AISI 304-316

Kalınlık = 5 mm.

**B TİPİ SPIDER 1'Lİ UZUN / SPTB-U1**



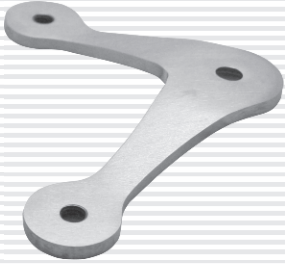
Saten - Parlak



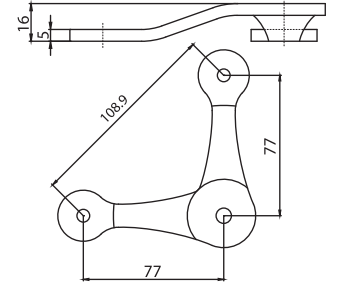
Malzeme = AISI 304-316

Kalınlık = 5 mm.

**B TİPİ SPIDER 2'Lİ V / SPTB-V**



Saten - Parlak



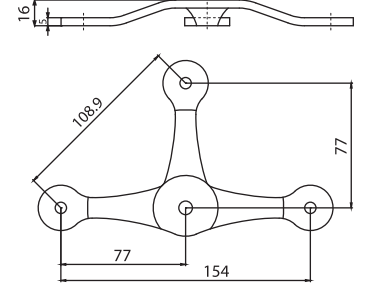
Malzeme = AISI 304-316

Kalınlık = 5 mm.

**B TİPİ SPIDER 3'LÜ / SPTB-3**



Saten - Parlak



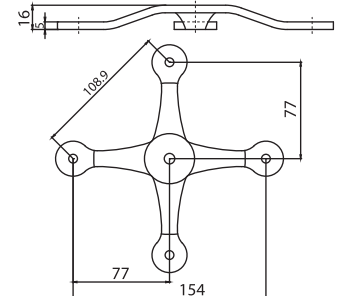
Malzeme = AISI 304-316

Kalınlık = 5 mm.

**B TİPİ SPIDER 4'LÜ / SPTB-4**

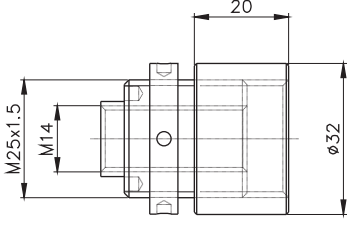


Saten - Parlak



Malzeme = AISI 304-316

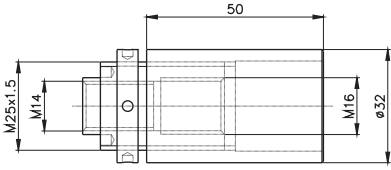
Kalınlık = 5 mm.

**SPIDER KONEKTÖRÜ / 32x20 (10 mm AYARLI)**


Malzeme = AISI 304-316



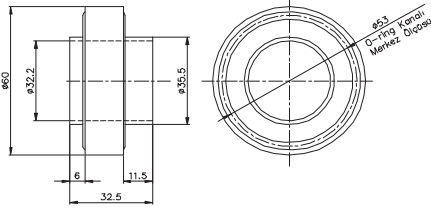
Saten - Parlak

**SPIDER KONEKTÖRÜ / 32x50 (30 mm AYARLI)**


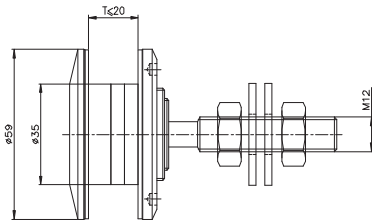
Malzeme = AISI 304-316



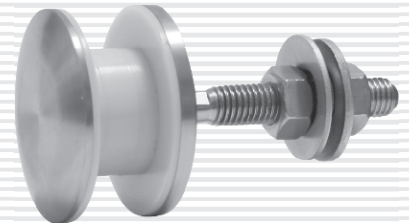
Saten - Parlak

**ISICAM ROTİL APARATI**


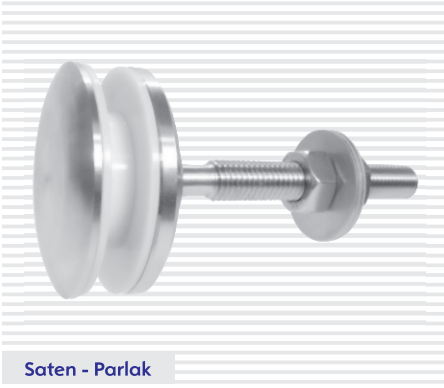
Malzeme = Alüminyum - Teflon


**ISICAM ROTİLİ**


Malzeme = AISI 304-316

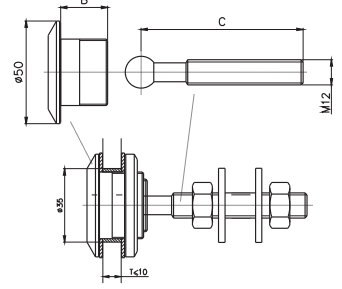


Saten - Parlak

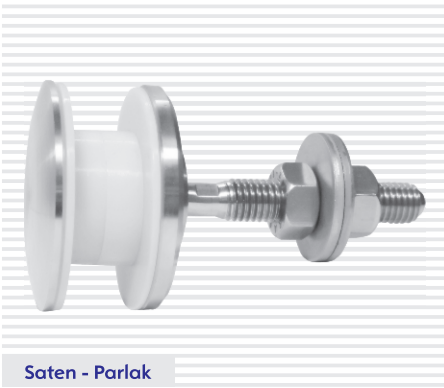
**SPIDER ROTİL Ø50 / SPR-50**


Saten - Parlak

Rotil Pul Çapı	(B)	(C) mm.
Ø50	21-32	77.5 - 104.5

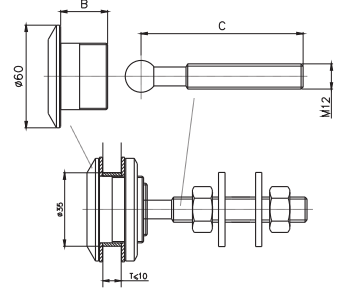


Malzeme = AISI 303-304-316

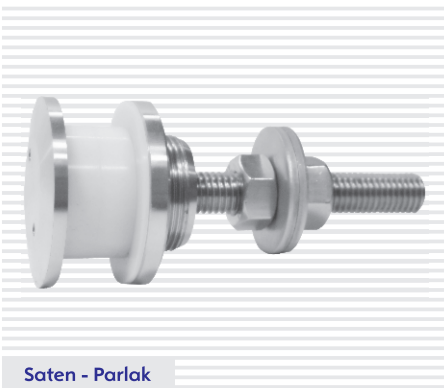
**SPIDER ROTİL Ø60 / SPR-60**


Saten - Parlak

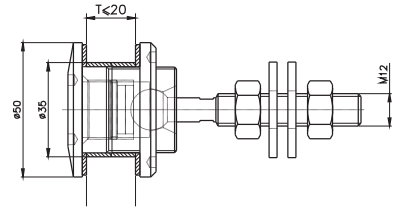
Rotil Pul Çapı	(B)	(C) mm.
Ø60	21-32	77.5 - 104.5



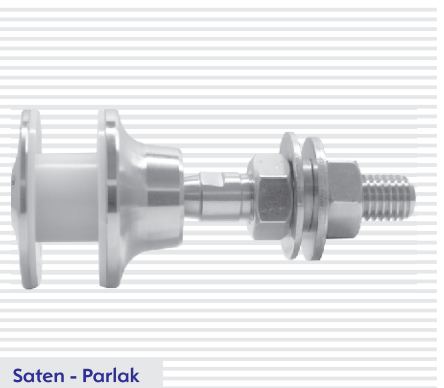
Malzeme = AISI 303-304-316

**SPIDER ROTİL ÖNDEN SIKMALI / SPRO-50**


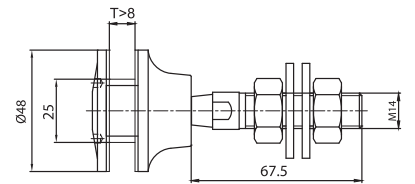
Saten - Parlak



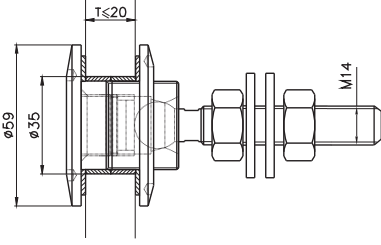
Malzeme = AISI 303-304-316

**SPIDER ROTİL ÖNDEN SIKMALI / SPRO-50B**


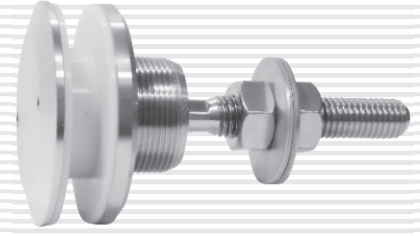
Saten - Parlak



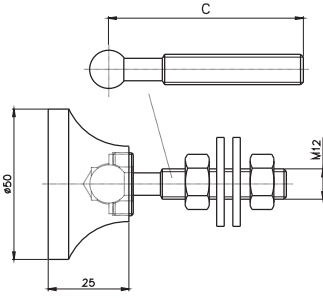
Malzeme = AISI 303-304-316

**SPIDER ROTİL ÖNDEN SIKMALI / SPRO-60**


Malzeme = AISI 303-304-316



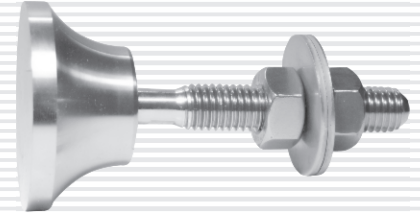
Saten - Parlak

**SPIDER ROTİL YAPIŞTIRMALI Ø50 / SPRY-50**


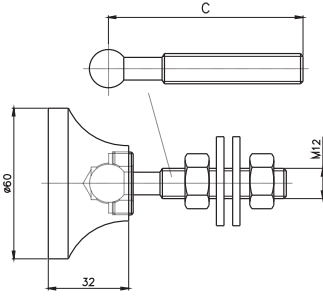
Malzeme = AISI 303-304-316

(C) mm.

47.5 - 77.5



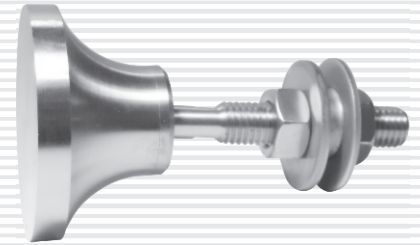
Saten - Parlak

**SPIDER ROTİL YAPIŞTIRMALI Ø60 / SPRY-60**


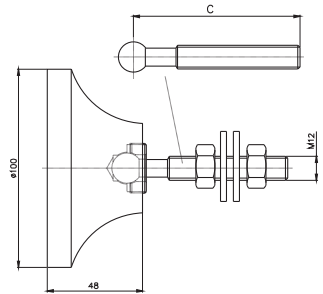
Malzeme = AISI 303-304-316

(C) mm.

77.5 - 104.5



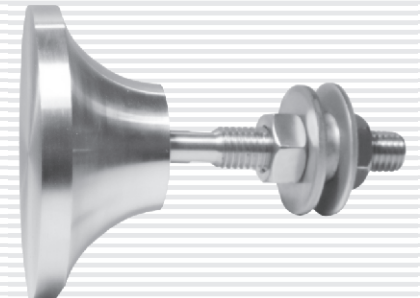
Saten - Parlak

**SPIDER ROTİL YAPIŞTIRMALI Ø100 / SPRY-100**


Malzeme = AISI 303-304-316

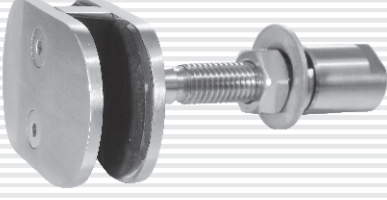
(C) mm.

77.5 - 104.5

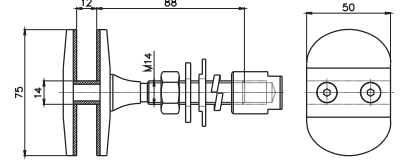


Saten - Parlak

**CAM TUTUCU ROTİL ÇİFT TARAFLI / SPR-C**

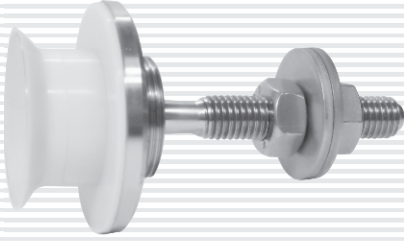


Saten - Parlak



Malzeme = AISI 303-304-316

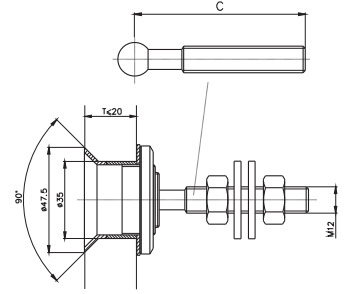
**SPIDER ROTİL KONİK GÖVDELİ / SPR-K**



Saten - Parlak

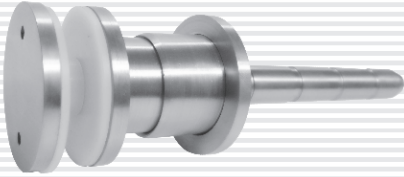
(C) mm.

77.5 - 104.5

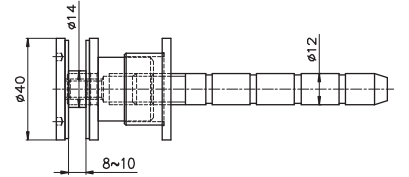


Malzeme = AISI 303-304-316

**CAM TUTUCU AYARLI SAPLAMALI ANKRAJ**

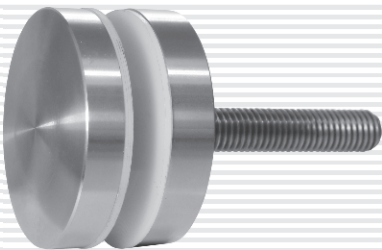


Saten - Parlak

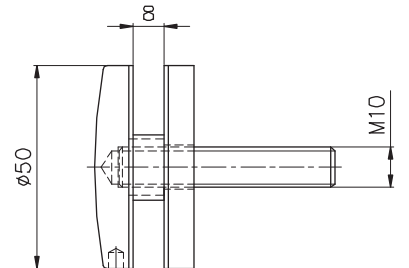


Malzeme = AISI 304

**CAM TUTUCU SAPLAMALI ANKRAJ**

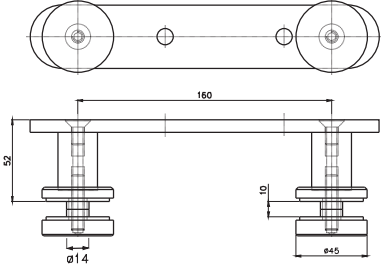


Saten - Parlak



Malzeme = AISI 303-304-316

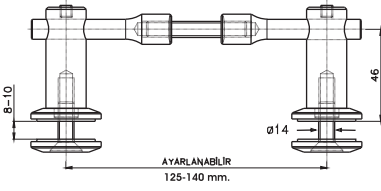


**CAM TUTUCU / CTS-010 (DİKME İÇİN)**


Malzeme = AISI 304



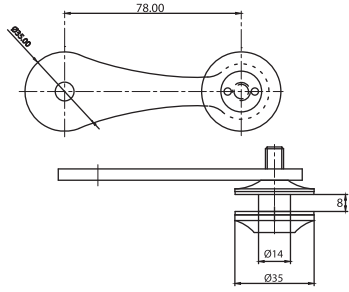
Saten - Parlak

**CAM TUTUCU / CTS-015 (DİKME İÇİN)**


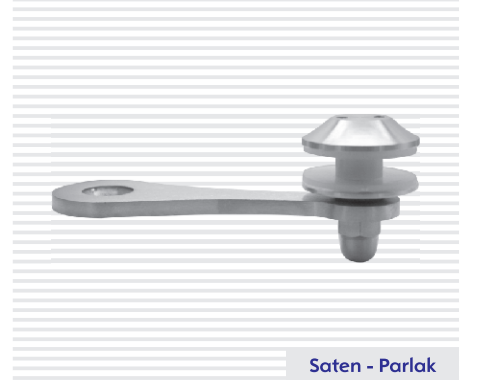
Malzeme = AISI 304-316



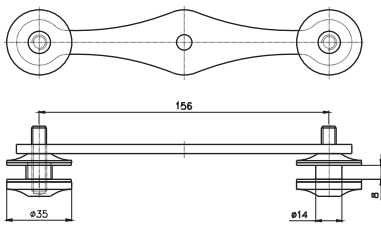
Saten - Parlak

**CAM TUTUCU 1'Lİ / CTS-020 (BİRLİ)**


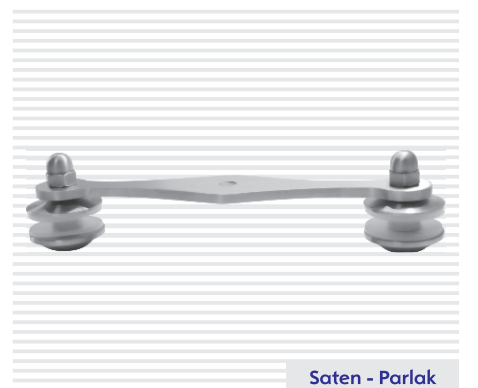
Malzeme = AISI 304-316



Saten - Parlak

**CAM TUTUCU 2'Lİ / CTS-020 (İKİLİ)**


Malzeme = AISI 304-316



Saten - Parlak

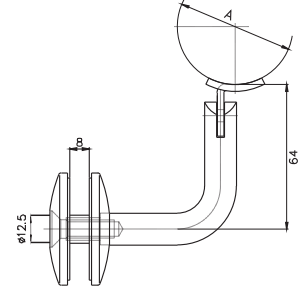
**CAM TUTUCU KOLÇAK / CTK-010**



Saten - Parlak

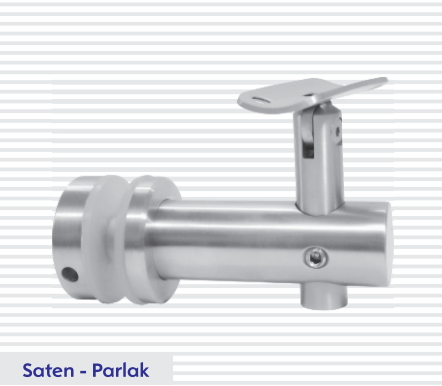
Küpeşte Çapları (A)

Ø 32-38-42-48-51-60



Malzeme = AISI 304-316

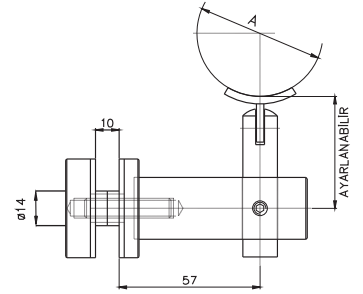
**CAM TUTUCU KOLÇAK / CTK-015**



Saten - Parlak

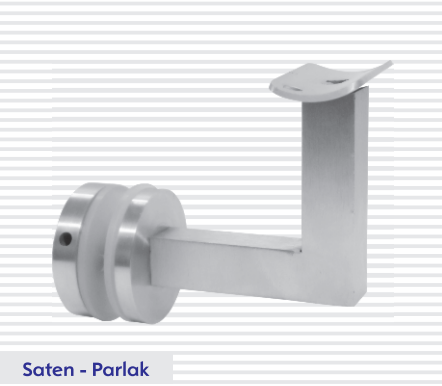
Küpeşte Çapları (A)

Ø 32-38-42-48-51-60



Malzeme = AISI 304-316

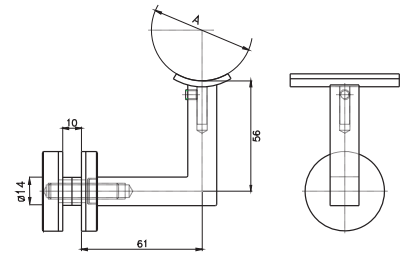
**CAM TUTUCU KOLÇAK / CTK-020**



Saten - Parlak

Küpeşte Çapları (A)

Ø 32-38-42-48-51-60

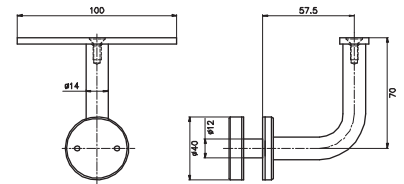


Malzeme = AISI 304-316

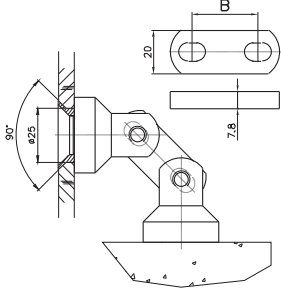
**CAM TUTUCU KOLÇAK / CTK-025**



Saten - Parlak



Malzeme = AISI 304-316

**CAM DUVAR KÖŞE BAĞLANTI APARATI - 001**


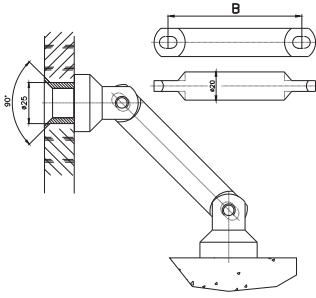
(B) mm.

30 - 55 - 90 - 105

Malzeme = AISI 304-316



Saten - Parlak

**CAM DUVAR KÖŞE BAĞLANTI APARATI - 003**


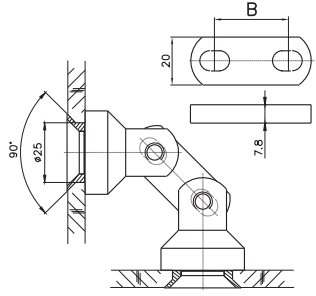
(B) mm.

60 - 65 - 72 - 94 - 115

Malzeme = AISI 304-316



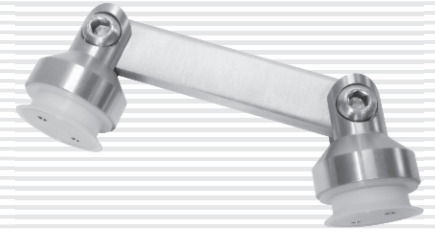
Saten - Parlak

**CAM CAMA KÖŞE BAĞLANTI APARATI - 001**


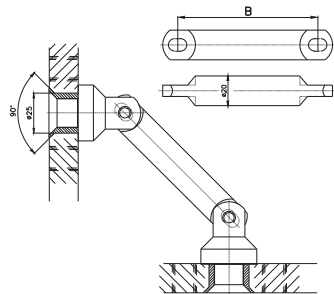
(B) mm.

30 - 55 - 90 - 105

Malzeme = AISI 304-316



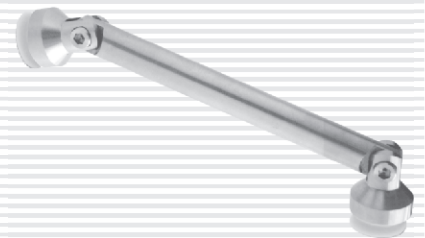
Saten - Parlak

**CAM CAMA KÖŞE BAĞLANTI APARATI - 003**


(B) mm.

60 - 65 - 72 - 94 - 115

Malzeme = AISI 304-316

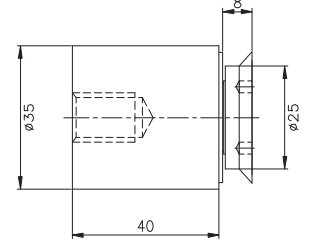


Saten - Parlak

### CAM DUVAR BAĞLANTI APARATI - 001



Saten - Parlak

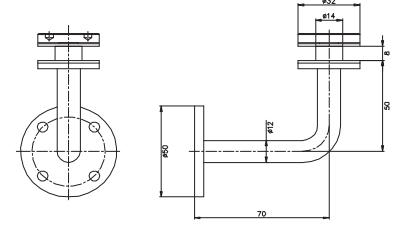


Malzeme = AISI 304-316

### CAM DUVAR BAĞLANTI APARATI - 002

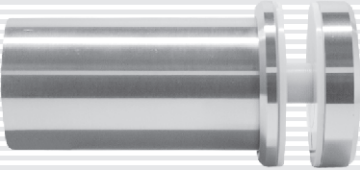


Saten - Parlak

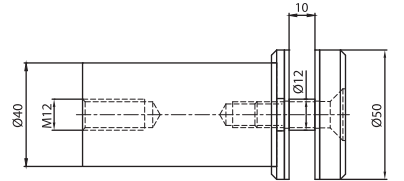


Malzeme = AISI 304-316

### CAM DUVAR BAĞLANTI APARATI - 003



Saten - Parlak



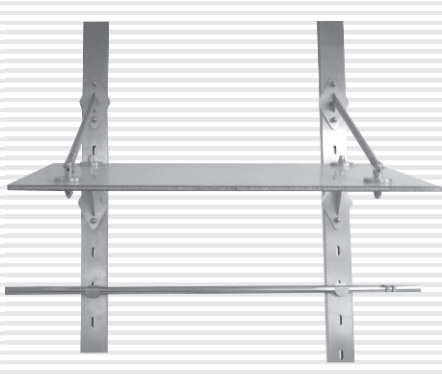
Not: İstenilen ölçülerde üretilebilir.

Malzeme = AISI 304-316

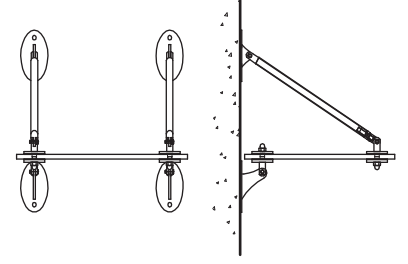


**CUBICLE BAĞLANTI SİSTEMLERİ  
MENTEŞELER - KAPI STOPERLERİ  
HALAT GERDİRME - ENGELLİ TUTAMAKLARI**

**CUBICLE BAĞLANTI SİSTEMLERİ - ENGELLİ TUTAMAKLARI  
MENTEŞELER - KAPI STOPERLERİ - HALAT GERDİRME**

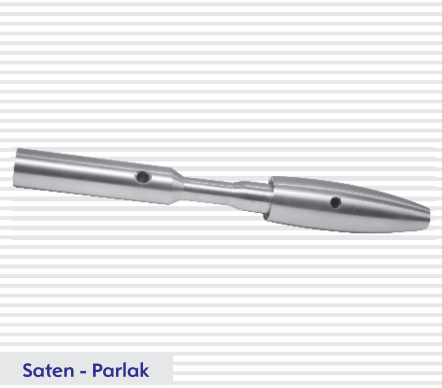


### KAPI GİRİŞ ÜSTÜ (CAM) HALAT GerdİRME SİSTEMİ



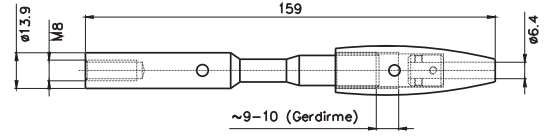
Not: Ayrıca İstenen Ölçülerde Sipariş Yapılabilir.

Malzeme = AISI 304

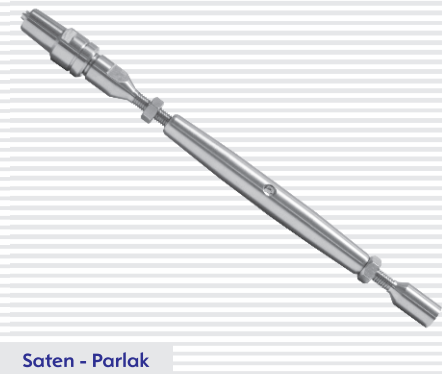


Saten - Parlak

### HALAT GerdİRME APARATI / HG-01

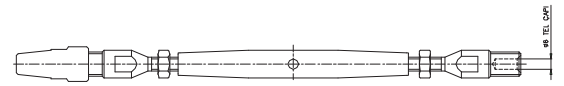


Malzeme = AISI 304-316



Saten - Parlak

### HALAT GerdİRME APARATI / HG-02

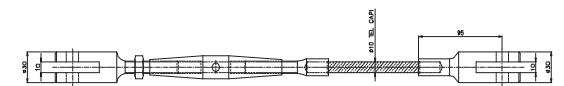


Malzeme = AISI 304-316



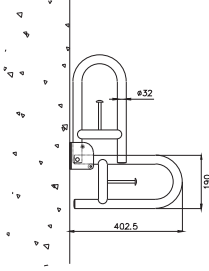
Saten - Parlak

### HALAT GerdİRME APARATI / HG-03

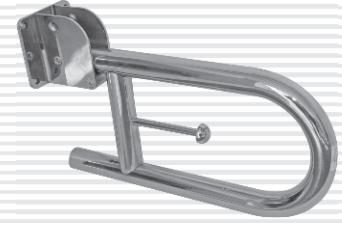


Malzeme = AISI 304-316

### ENGELLİ TUVALET TUTAMAĞI HAREKETLİ KISA

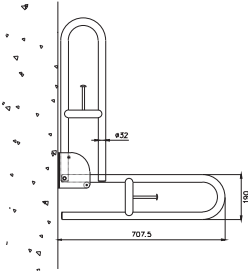


Malzeme = AISI 304

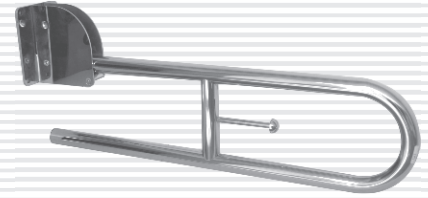


Saten - Parlak

### ENGELLİ TUVALET TUTAMAĞI HAREKETLİ UZUN

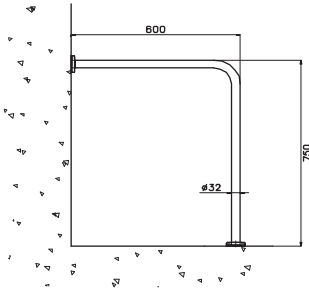


Malzeme = AISI 304



Saten - Parlak

### ENGELLİ TUVALET TUTAMAĞI SABİT - L1



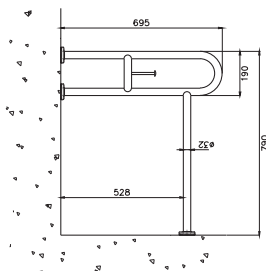
Malzeme = AISI 304

Kalınlık = 1 mm.



Saten - Parlak

### ENGELLİ TUVALET TUTAMAĞI SABİT - L2



Malzeme = AISI 304



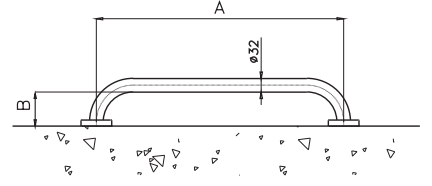
Saten - Parlak

### ENGELLİ TUVALET TUTAMAĞI DÜZ

(A) mm.	(B) mm.
580	80
260	60



Saten - Parlak

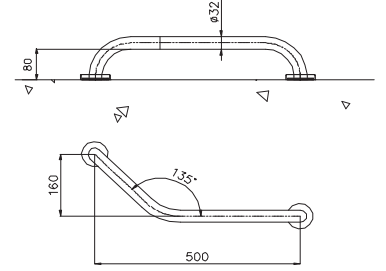


Malzeme = AISI 304

### ENGELLİ TUVALET TUTAMAĞI AÇILI



Saten - Parlak

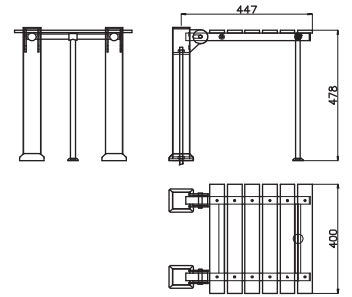


Malzeme = AISI 304

### ENGELLİ BANYO OTURAĞI PASLANMAZ



Saten - Parlak

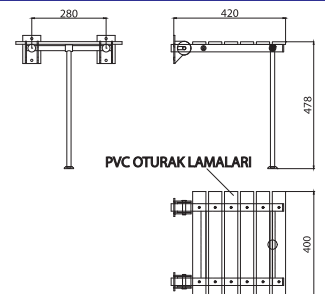


Malzeme = AISI 304

### ENGELLİ BANYO OTURAĞI DUVAR TİPİ



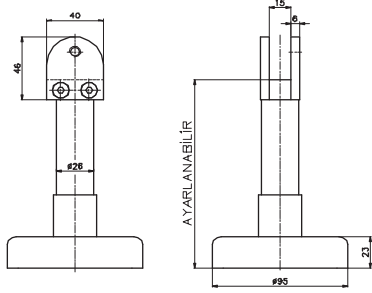
Saten - Parlak



Malzeme = İskelet: AISI 304 - Oturak: PVC



### CUBICLE BAĞLANTI SİSTEMLERİ - 1

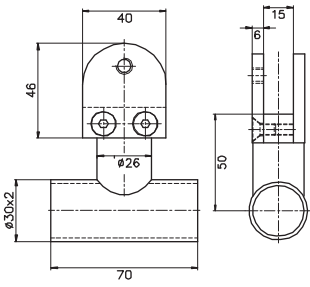


Malzeme = AISI 304-316



Saten - Parlak

### CUBICLE BAĞLANTI SİSTEMLERİ - 2

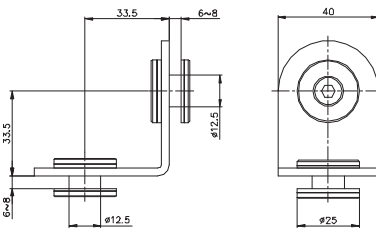


Malzeme = AISI 304-316



Saten - Parlak

### CUBICLE BAĞLANTI SİSTEMLERİ - 3

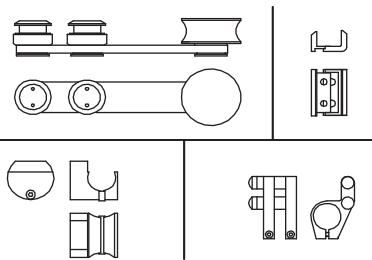


Malzeme = AISI 304-316

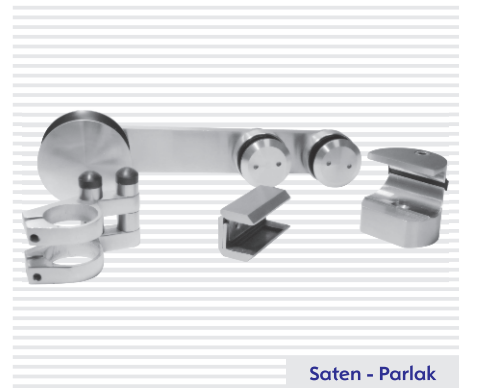


Saten - Parlak

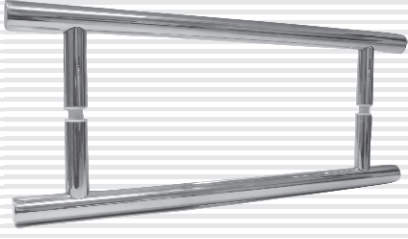
### KAYAR KAPI MEKANİZMASI TAKIM



Malzeme = AISI 304



Saten - Parlak

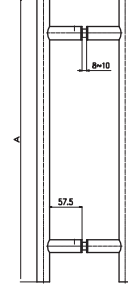


Saten - Parlak

### CAM KAPI KOLU

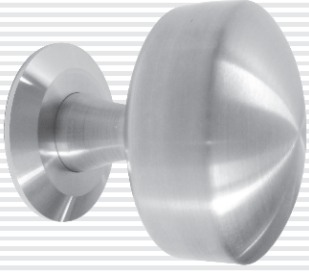
(A) Kapı Kolu Boyu (mm.)

300 - 400 - 500 - 800 - 1000



Malzeme = AISI 304

Not: İstenilen Ölçülerde Üretim Yapılabilir.

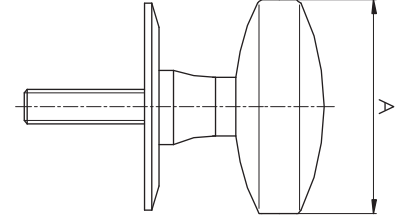


Saten - Parlak

### KAPI TOKMAĞI

Kapı Tokmağı ölçüleri (A)

Ø38-42-48-51-60-70

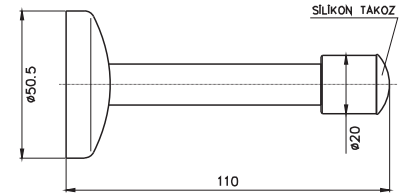


Malzeme = AISI 304-316



Saten - Parlak

### KAPI STOPERİ / KS-01

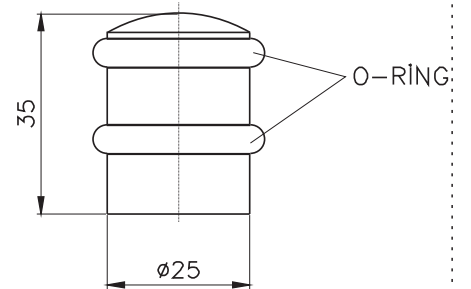


Malzeme = AISI 304



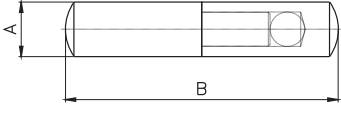
Saten - Parlak

### KAPI STOPERİ / KS-02



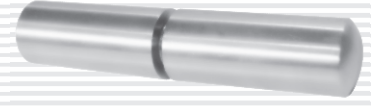
Malzeme = AISI 304

### MİL MENTEŞE



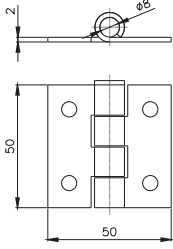
Menteşe Mil Çapları (A)	(B) mm.
Ø10	60
Ø12	70
Ø14	80
Ø16	100
Ø18	100

Malzeme = AISI 304-316



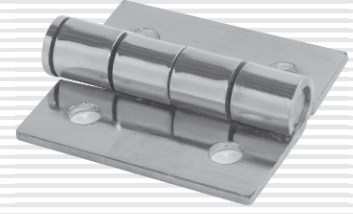
Saten - Parlak

### ÖZEL MENTEŞE 50x50



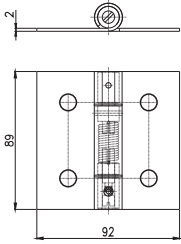
Malzeme = AISI 304-316

Kalınlık = 2 mm.



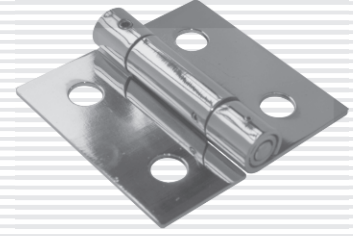
Saten - Parlak

### ÖZEL YAYLI MENTEŞE



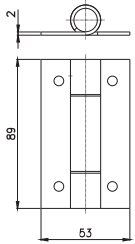
Malzeme = AISI 304-316

Kalınlık = 2 mm.



Saten - Parlak

### ÖZEL MENTEŞE 53x89



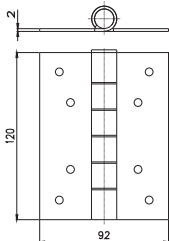
Malzeme = AISI 304-316

Kalınlık = 2 mm.



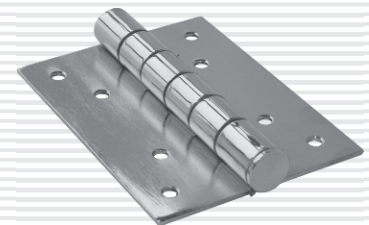
Saten - Parlak

### ÖZEL MENTEŞE 120X92



Malzeme = AISI 304-316

Kalınlık = 2 mm.

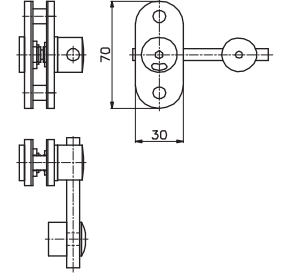


Saten - Parlak



Saten - Parlak

### WC KAPI KİLİTİ - 01

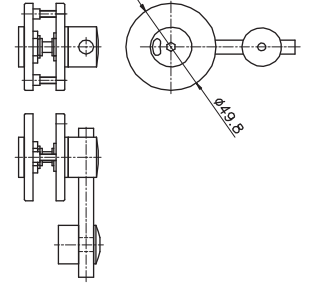


Malzeme = AISI 304-316

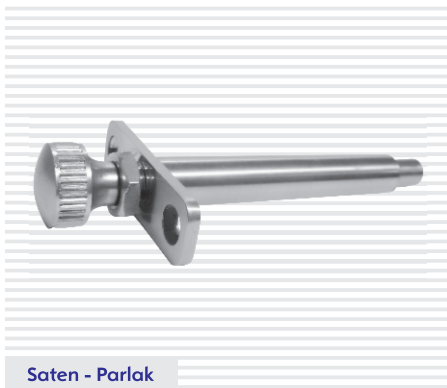


Saten - Parlak

### WC KAPI KİLİTİ - 02

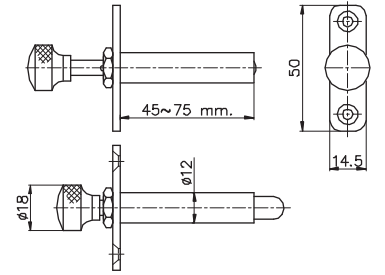


Malzeme = AISI 304-316

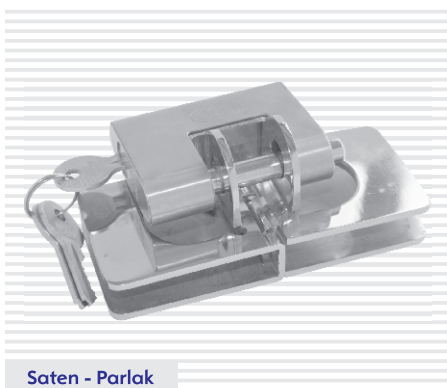


Saten - Parlak

### ÇOCUK KİLİTİ

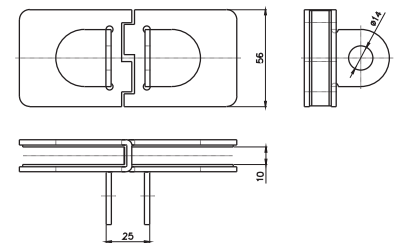


Malzeme = AISI 304-316



Saten - Parlak

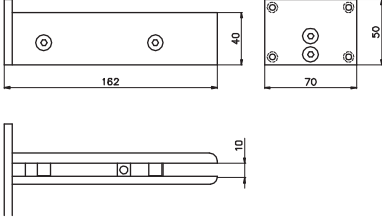
### CAM KAPI KİLİT MEKANİZMASI



Not: Kilit Hariç Üretilmektedir.

Malzeme = AISI 304-316

### CAM KAPI BAĞLAMA APARATI

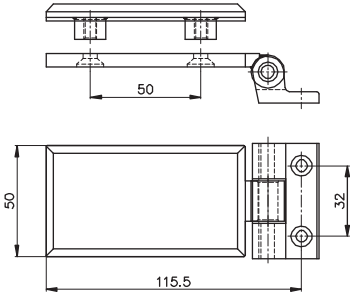


Malzeme = AISI 304



Saten - Parlak

### CAM KAPI MENTEŞESİ - 01

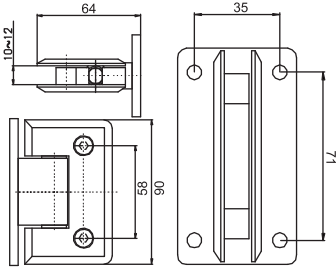


Malzeme = AISI 304



Saten - Parlak

### CAM DUVAR PARADUŞ MENTEŞESİ - 01

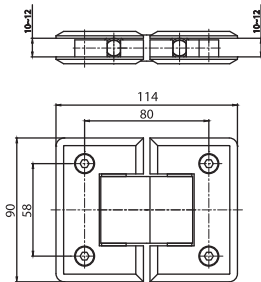


Malzeme = AISI 304-316

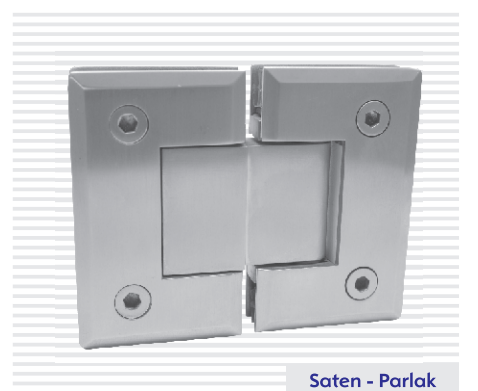


Saten - Parlak

### CAM CAMA PARADUŞ MENTEŞESİ - 01

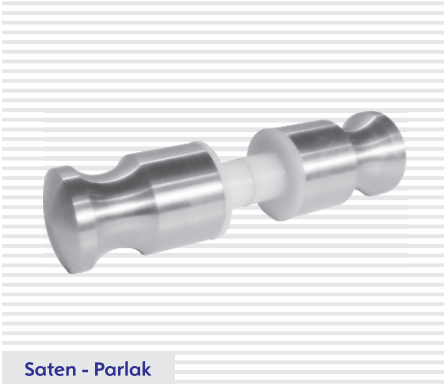


Malzeme = AISI 304-316

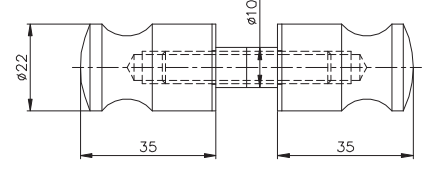


Saten - Parlak

### PARADUŞ KULBU



Saten - Parlak

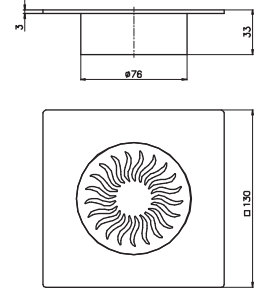


Malzeme = AISI 304-316

### BANYO GİDER KAPAĞI

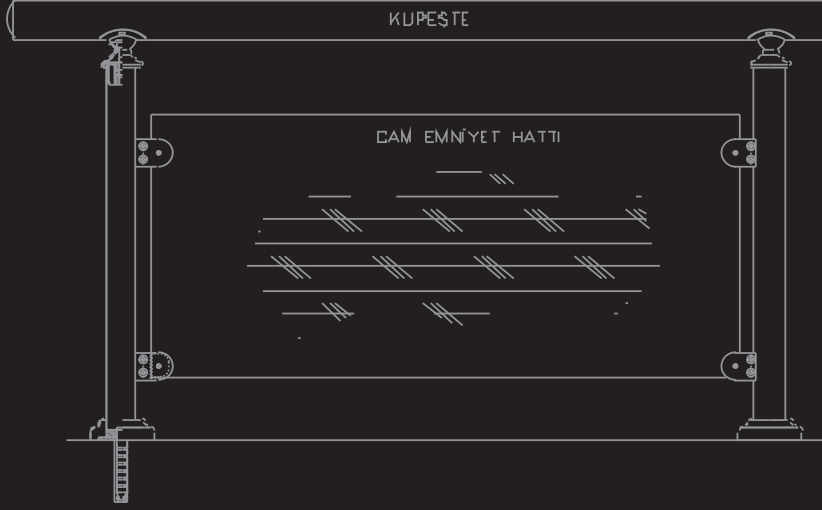


Saten - Parlak



Malzeme = AISI 304-316

ÖZEL DEKORATİF DİKMELER - HIRDAVAT GRUBU  
BAYRAK DİREĞİ VE AKSESUARLARI



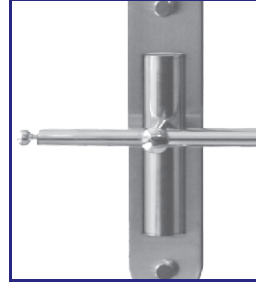
ÖZEL DEKORATİF DİKMELER  
BAYRAK DİREĞİ VE AKSESUARLARI  
HIRDAVAT GRUBU

ÖZEL DEKORATİF DİKME - 01



Malzeme = AISI 304

Saten - Parlak

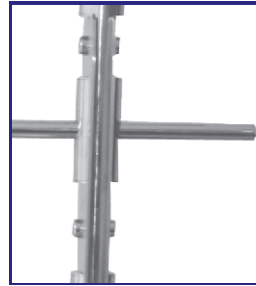


ÖZEL DEKORATİF DİKME - 02



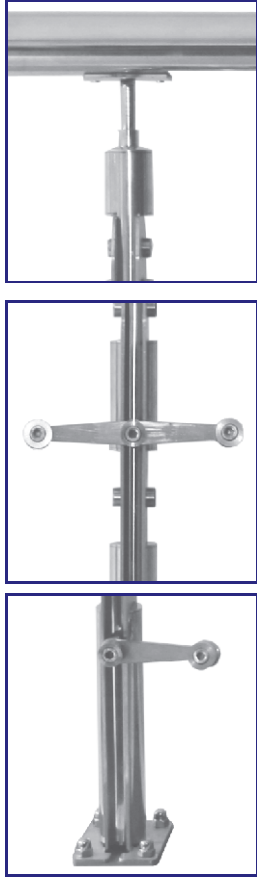
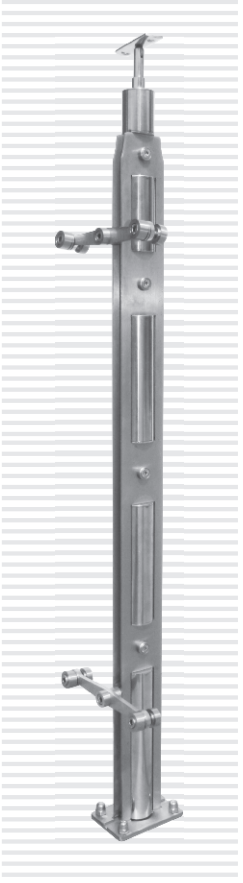
Malzeme = AISI 304

Saten - Parlak





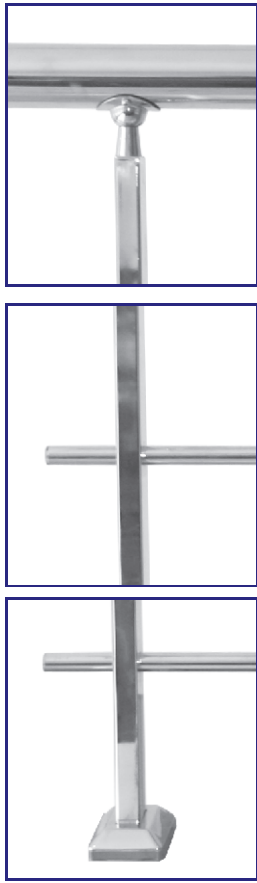
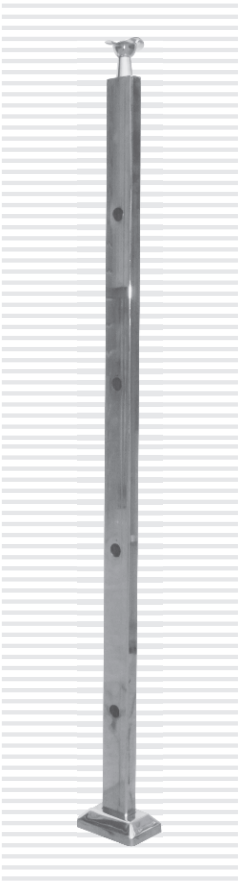
ÖZEL DEKORATİF DİKME - 03



Saten - Parlak

Malzeme = AISI 304

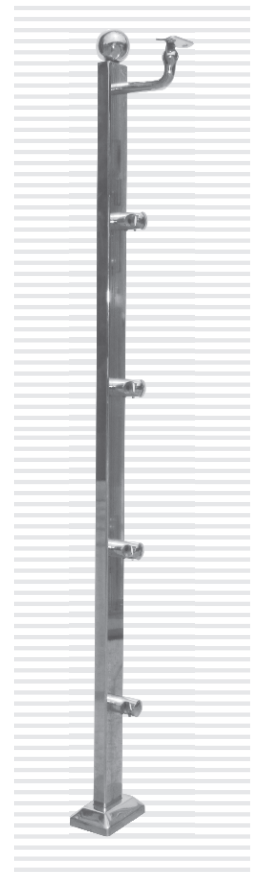
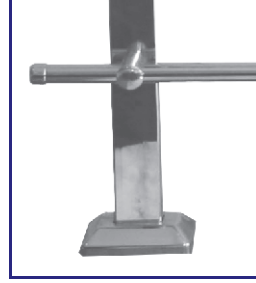
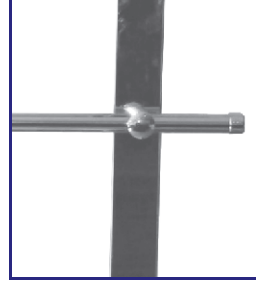
ÖZEL DEKORATİF DİKME - 04



Saten - Parlak

Malzeme = AISI 304

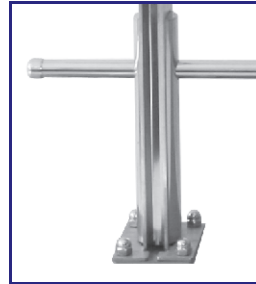
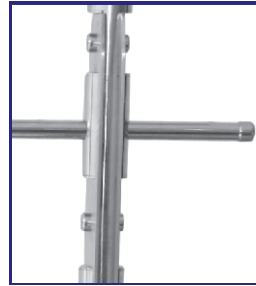
**ÖZEL DEKORATİF DİKME - 05**



Malzeme = AISI 304

Saten - Parlak

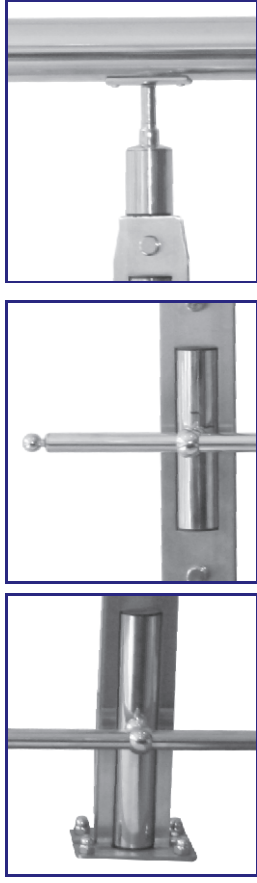
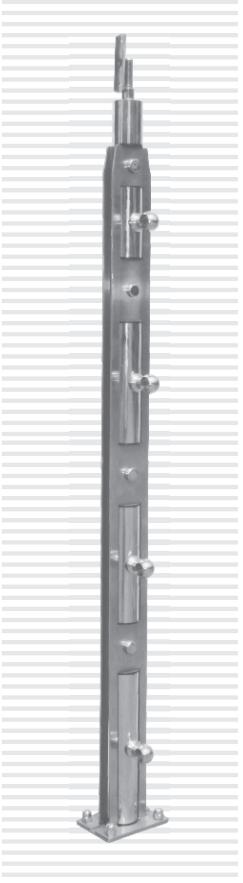
**ÖZEL DEKORATİF DİKME - 06**



Malzeme = AISI 304

Saten - Parlak

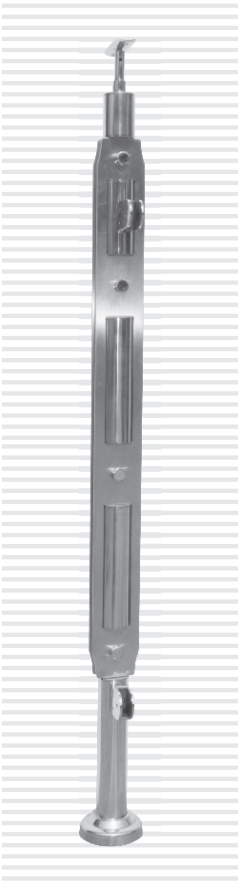
ÖZEL DEKORATİF DİKME - 07



Saten - Parlak

Malzeme = AISI 304

ÖZEL DEKORATİF DİKME - 08



Saten - Parlak

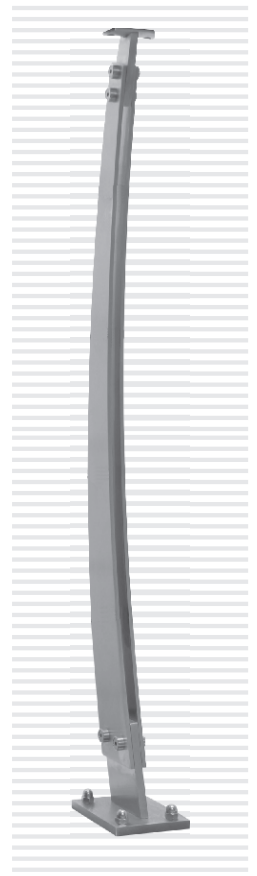
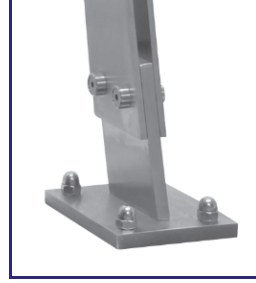
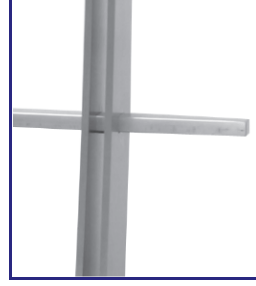
Malzeme = AISI 304

ÖZEL DEKORATİF DİKME - 09



Malzeme = AISI 304

Saten - Parlak

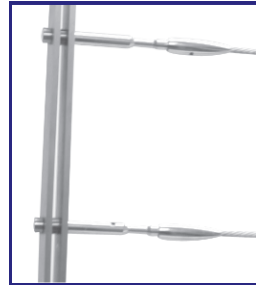


ÖZEL DEKORATİF DİKME - 10

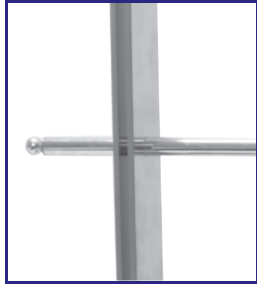
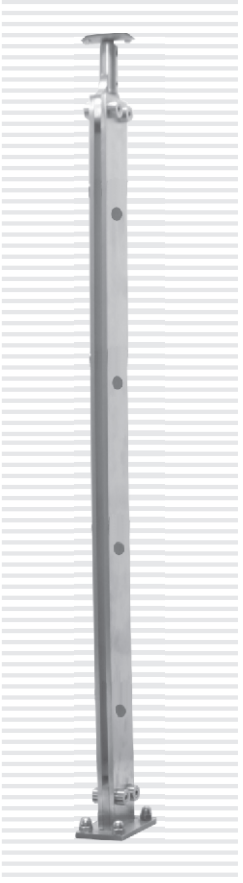


Malzeme = AISI 304

Saten - Parlak



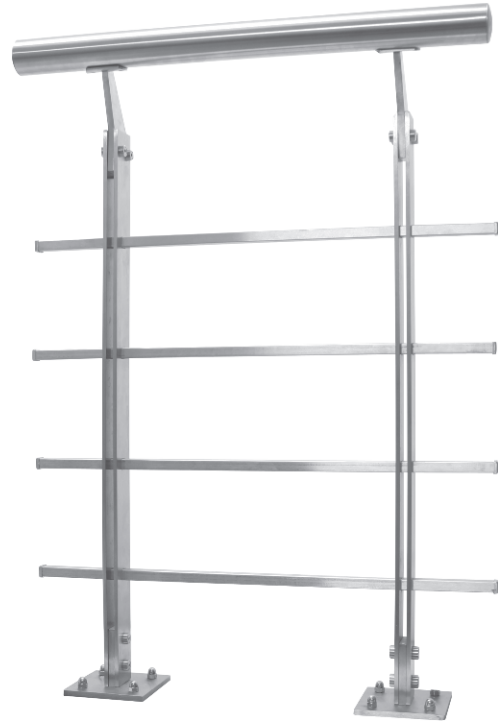
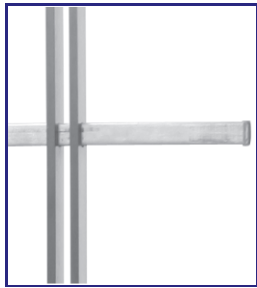
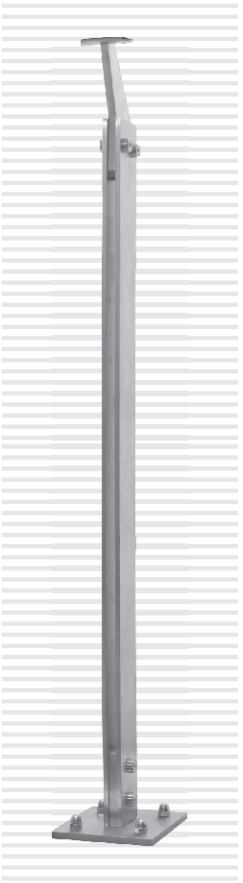
ÖZEL DEKORATİF DİKME - 11



Saten - Parlak

Malzeme = AISI 304

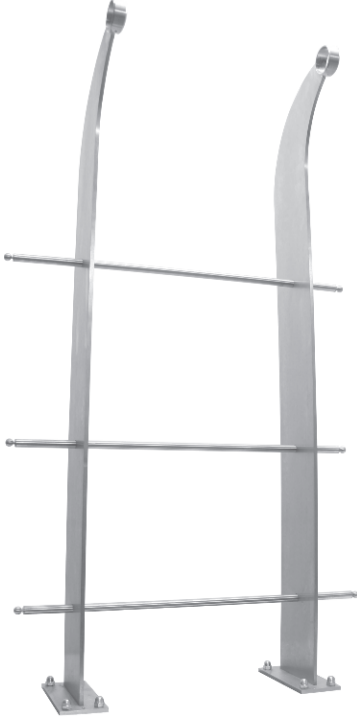
ÖZEL DEKORATİF DİKME - 12



Saten - Parlak

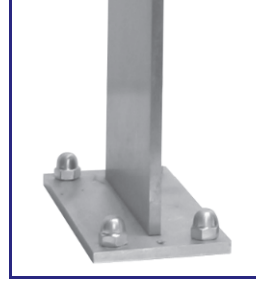
Malzeme = AISI 304

**ÖZEL DEKORATİF DİKME - 13**



Malzeme = AISI 304

Saten - Parlak

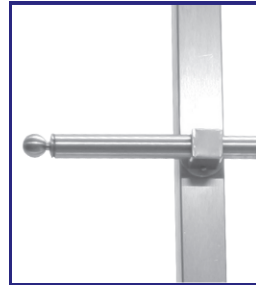


**ÖZEL DEKORATİF DİKME - 14**

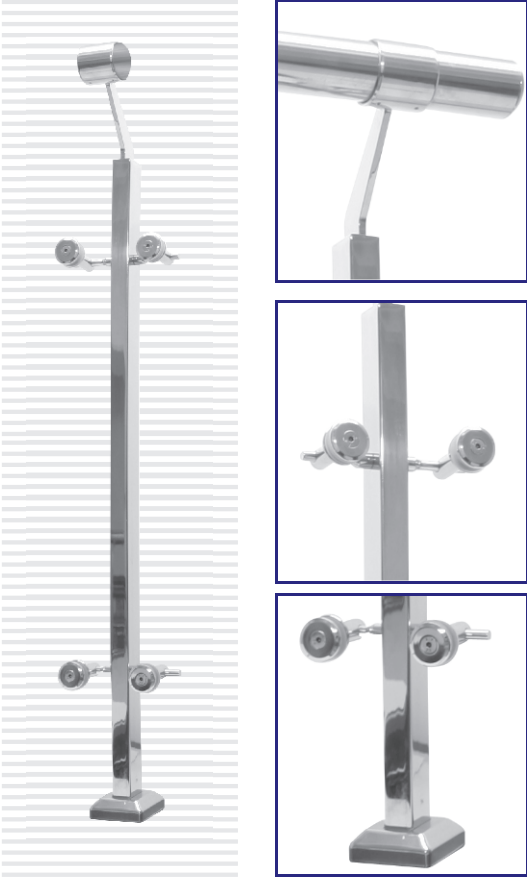


Malzeme = AISI 304

Saten - Parlak



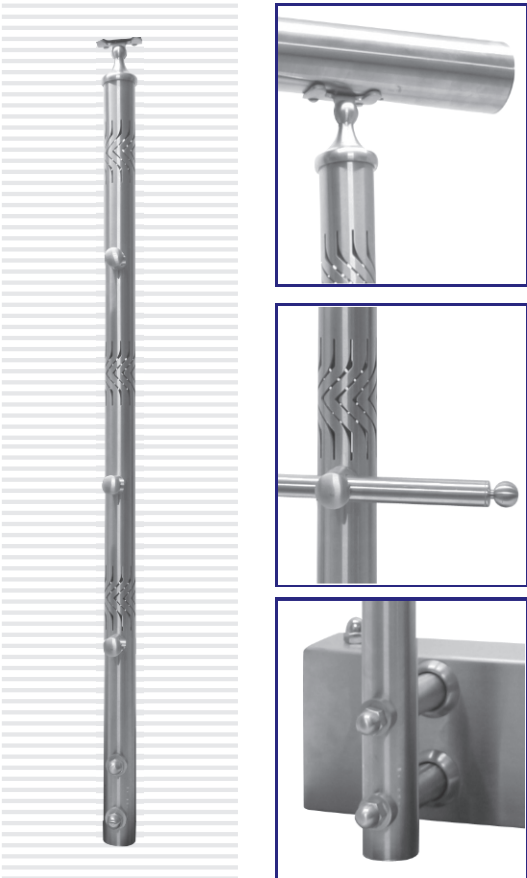
ÖZEL DEKORATİF DİKME - 15



Saten - Parlak

Malzeme = AISI 304

ÖZEL DEKORATİF DİKME - 16



Saten - Parlak

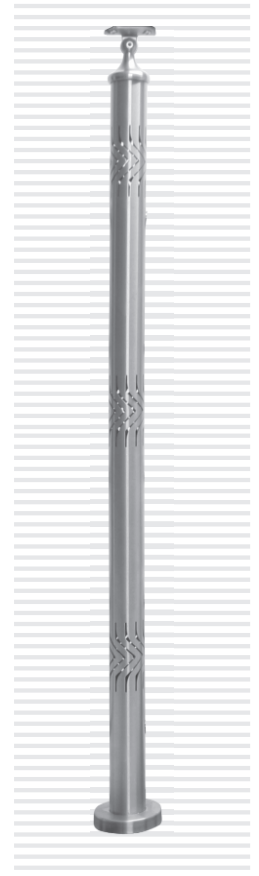
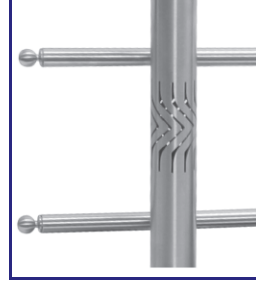
Malzeme = AISI 304

ÖZEL DEKORATİF DİKME - 17



Malzeme = AISI 304

Saten - Parlak

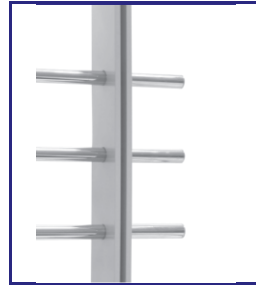


ÖZEL DEKORATİF DİKME - 18



Malzeme = AISI 304

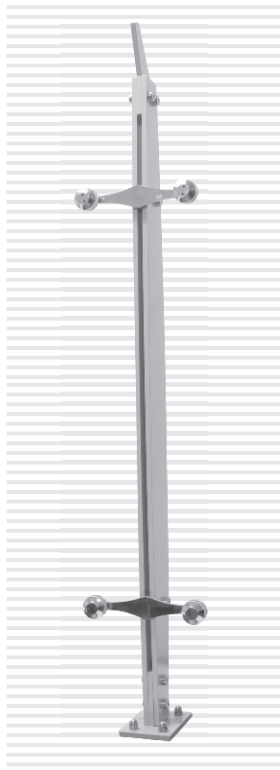
Saten - Parlak



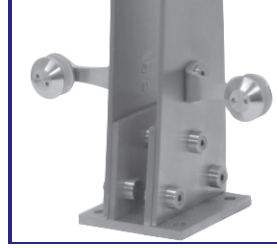


**ÖZEL DEKORATİF DİKME - 19**

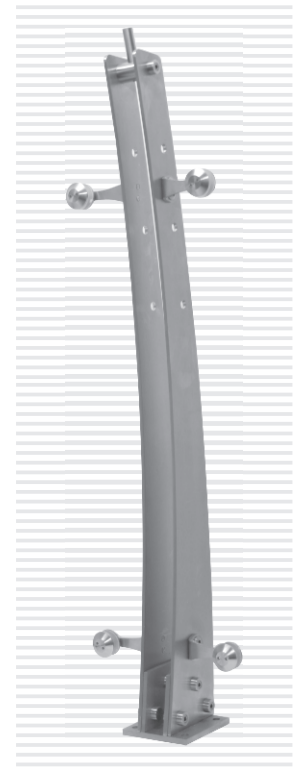
Malzeme = AISI 304



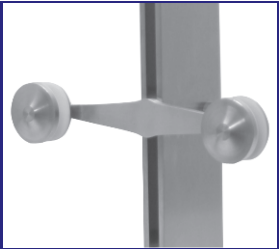
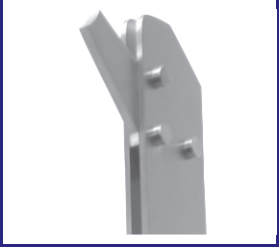
Saten - Parlak

**ÖZEL DEKORATİF DİKME - 20**

Malzeme = AISI 304



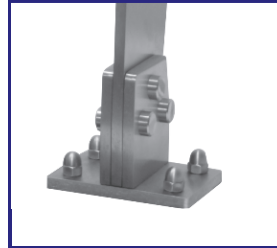
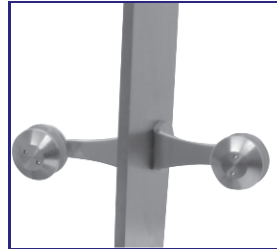
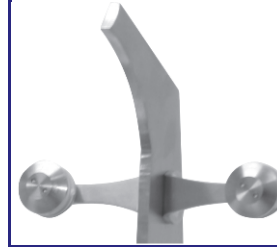
Saten - Parlak

**ÖZEL DEKORATİF DİKME - 21**

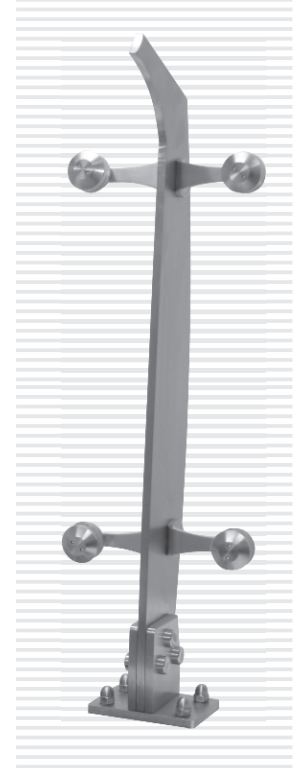
Malzeme = AISI 304



Saten - Parlak

**ÖZEL DEKORATİF DİKME - 22**

Malzeme = AISI 304

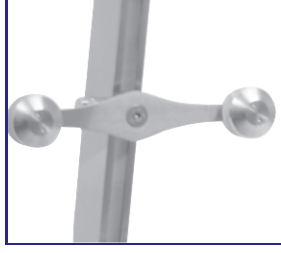
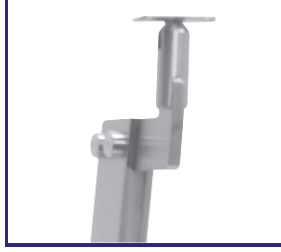


Saten - Parlak

ÖZEL DEKORATİF DİKME - 23



Saten - Parlak

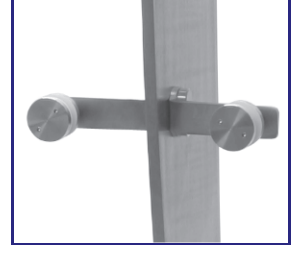


Malzeme = AISI 304

ÖZEL DEKORATİF DİKME - 24

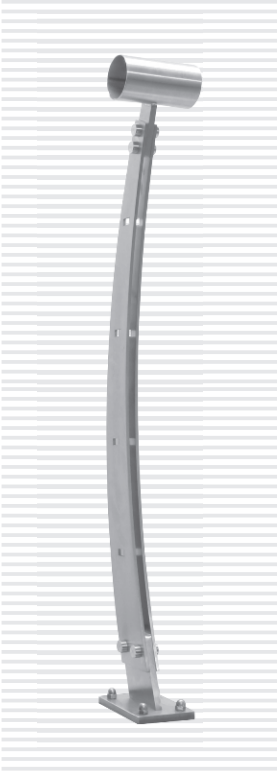


Saten - Parlak

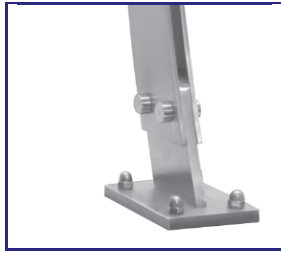


Malzeme = AISI 304

ÖZEL DEKORATİF DİKME - 25



Saten - Parlak

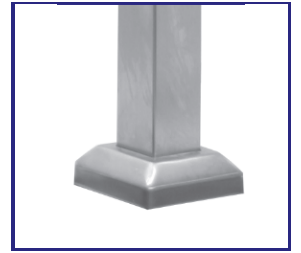
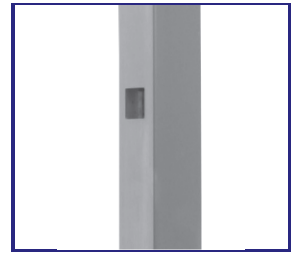


Malzeme = AISI 304

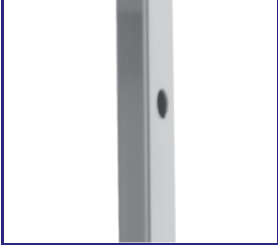
ÖZEL DEKORATİF DİKME - 26



Saten - Parlak



Malzeme = AISI 304

**ÖZEL DEKORATİF DİKME - 27**

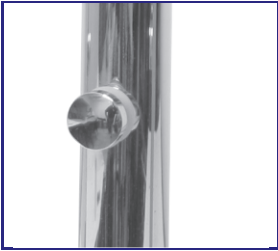
Malzeme = AISI 304

Saten - Parlak

**ÖZEL DEKORATİF DİKME - 28**

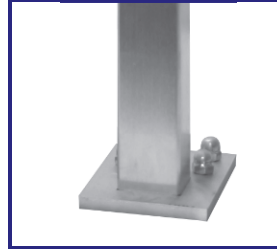
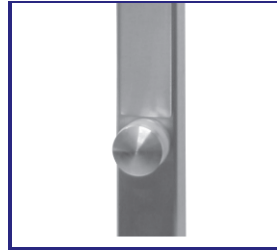
Malzeme = AISI 304

Saten - Parlak

**ÖZEL DEKORATİF DİKME - 29**

Malzeme = AISI 304

Saten - Parlak

**ÖZEL DEKORATİF DİKME - 30**

Malzeme = AISI 304

Saten - Parlak

**BAYRAK DİREĞİ**



Saten - Parlak

**SONSUZ DÖNER**



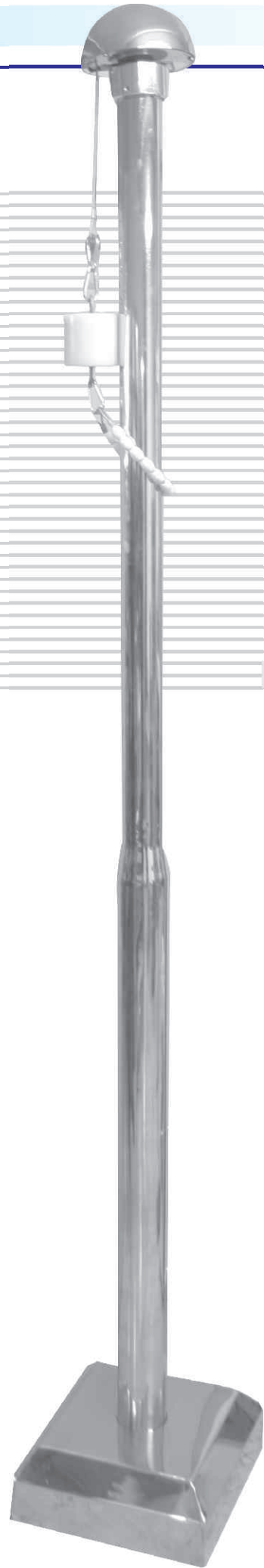
Saten - Parlak

**KOÇ BOYNUZU**

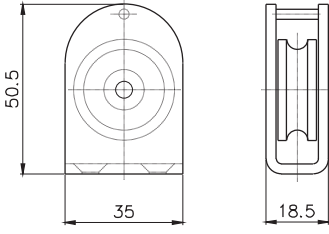


Saten - Parlak

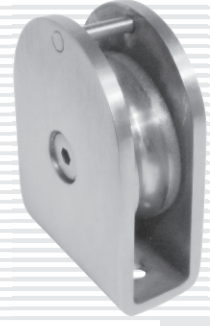
Malzeme = AISI 304-316



### BAYRAK DİREK MAKARASI

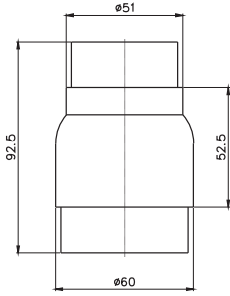


Malzeme = AISI 304



Saten - Parlak

### REDİKSİYON - 60x51

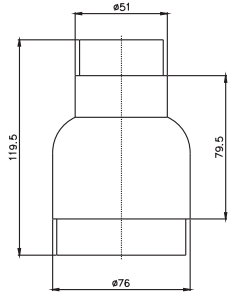


Malzeme = AISI 304



Saten - Parlak

### REDİKSİYON - 76x51

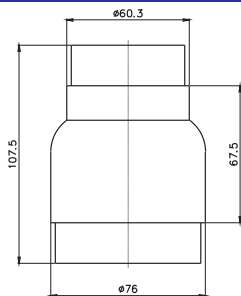


Malzeme = AISI 304



Saten - Parlak

### REDİKSİYON - 76x60

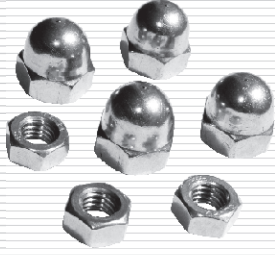


Malzeme = AISI 304



Saten - Parlak

**CİVATA GRUBU**



**ÇELİK DÜBEL**



**BORU ÇAPLARI**

- Ø 15,8
- Ø 21,3
- Ø 25,4
- Ø 32
- Ø 38
- Ø 42,4
- Ø 50,8
- Ø 60,3



**YÜZÜK BAĞLANTI VİDALARI**



Inox

**POP PERÇİNLER**



Aluminyum / Inox

**KÜPEŞTE BAĞLANTI VİDALARI**

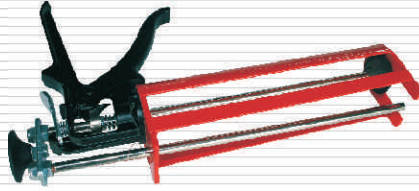


Inox / Galvanizli

**PERÇİN TABANCASI**



**EPOXY TABANCASI**



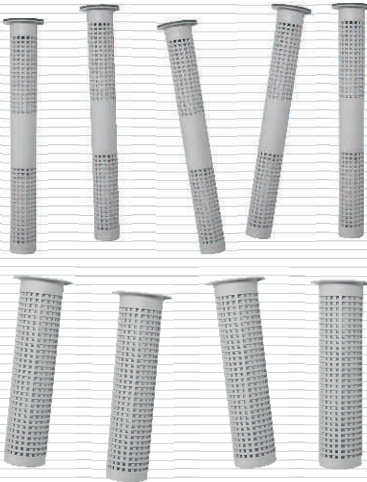
**TOZ POMPASI**



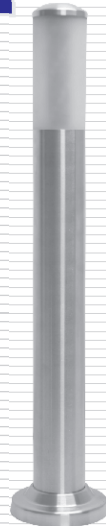
**ZEMİN BAĞLANTI EPOXY**

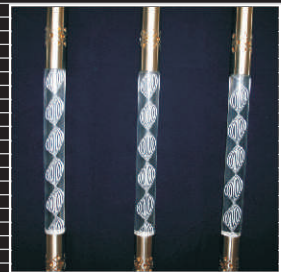
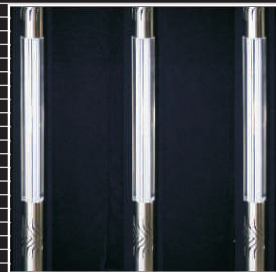
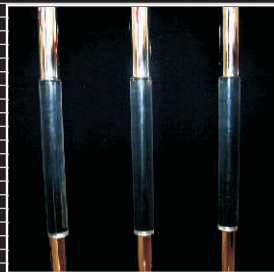
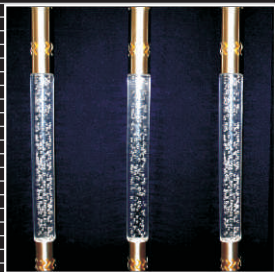
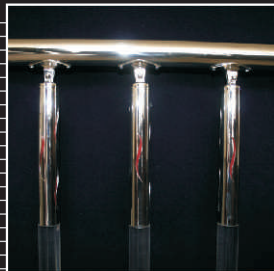
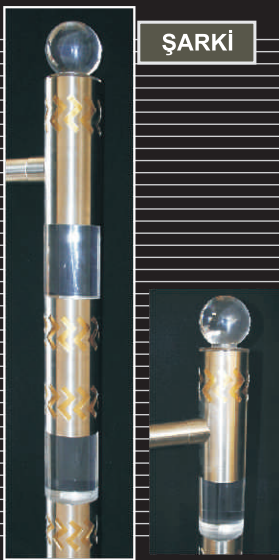
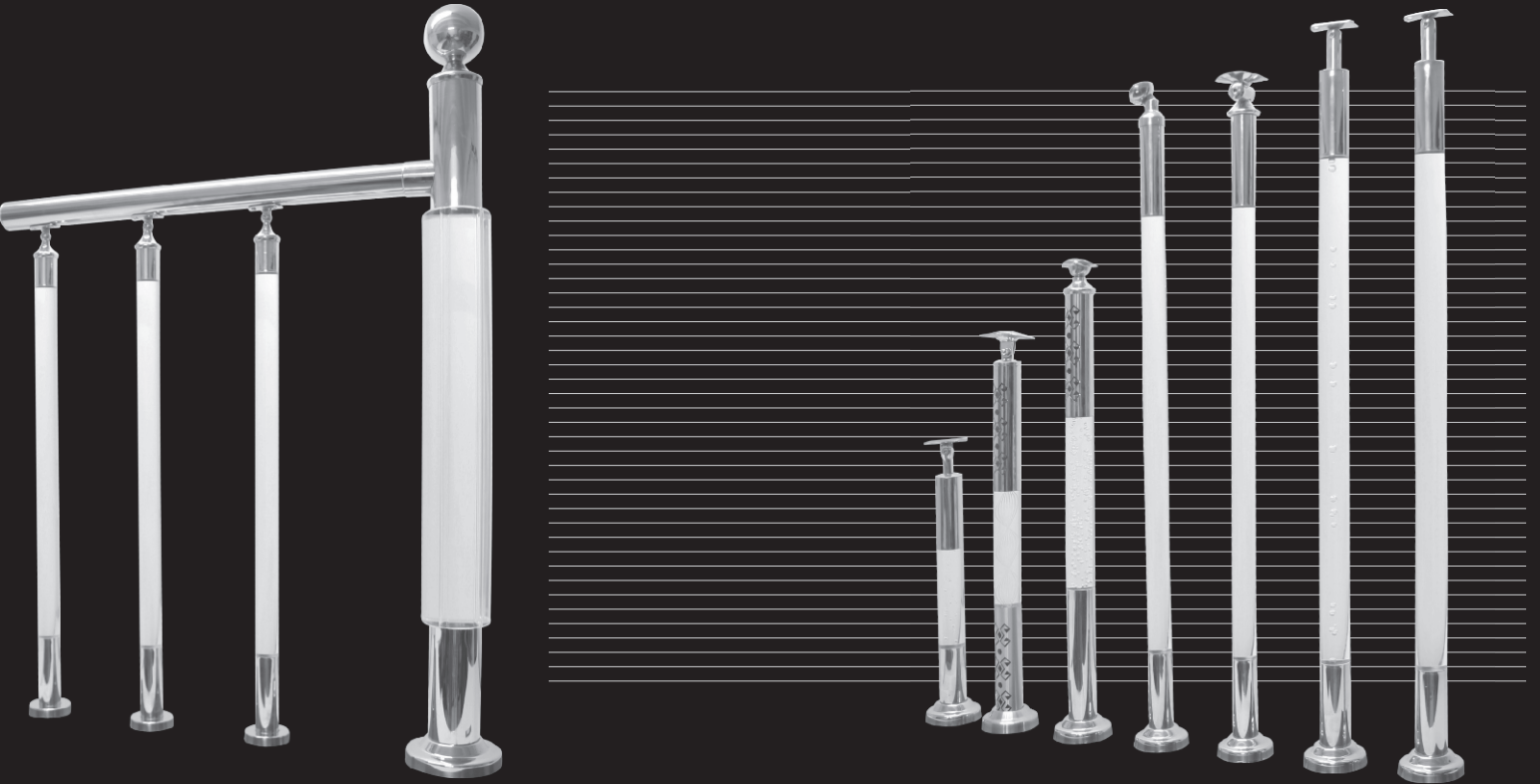


**FİLE**



**LAMBA**





**A**

A TİPİ SPİDER 1'Lİ UZUN - SPTA-U1 50  
 A TİPİ SPİDER 2'Lİ V - SPTA-V 50  
 A TİPİ SPİDER 3'LÜ - SPTA-3 51  
 A TİPİ SPİDER 4'LÜ - SPTA-4 51  
 AÇILI ROZET - ADPR 7  
 AÇILI ROZET - APR 7  
 AÇILI BABA BAĞLANTISI - ABB 01 44  
 AÇILI CAM TUTUCU (8MM CAMA) - ACK 100 48  
 AÇILI CAM TUTUCU (8MM CAMA) - DACK 500 48  
 AÇILI CAM TUTUCU (8MM CAMA) - DACK 800 48  
 ANKRAJLI DUVAR KOLÇAĞI - HR 300 36  
 ANKRAJLI DUVAR KOLÇAĞI - HRA 300 36  
 ANKRAJLI DUVAR KOLÇAĞI - HRA 600 37  
 AYARLI DİKME KOLÇAĞI - HR 101 35

**B**

B TİPİ SPİDER 1'Lİ - SPTB-1 51  
 B TİPİ SPİDER 1'Lİ UZUN - SPTB-U1 52  
 B TİPİ SPİDER 2'Lİ - SPTB-2 51  
 B TİPİ SPİDER 2'Lİ V - SPTB-V 52  
 B TİPİ SPİDER 3'LÜ - SPTB-3 52  
 B TİPİ SPİDER 4'LÜ - SPTB-4 52  
 BADEM YÜZÜK BY 200 26  
 BAĞLANTI YÜZÜK - BY 100 26  
 BANYO GİDER KAPAĞI 70  
 BAR TEKMELİĞİ - BT 40  
 BAYRAK DİREĞİ 84  
 BAYRAK DİREK MAKARASI 85  
 BİLEZİK - B 27  
 BİTİŞ BAĞLANTISI - BB 30  
 BORU ÇEŞİTLERİ 86

**C**

CAM CAMA KÖŞE BAĞLANTI APARATI - 001 59  
 CAM CAMA KÖŞE BAĞLANTI APARATI - 003 59  
 CAM CAMA PARADUŞ MENTEŞE - 01 69  
 CAM DUVAR BAĞLANTI APARATI - 001 60  
 CAM DUVAR BAĞLANTI APARATI - 002 60  
 CAM DUVAR BAĞLANTI APARATI - 003 60  
 CAM DUVAR KÖŞE BAĞLANTI APARATI - 001 59  
 CAM DUVAR KÖŞE BAĞLANTI APARATI - 003 59  
 CAM DUVAR PARADUŞ MENTEŞE - 01 69  
 CAM KAPI BAĞLAMA APARATI 69  
 CAM KAPI KİLİT MEKANİZMASI 68  
 CAM KAPI KOLU 66  
 CAM KAPI MENTEŞESİ - 01 69  
 CAM TUTUCU (8-10MM CAMA) - CK 100 46  
 CAM TUTUCU (8-10MM CAMA) - CK 200 46  
 CAM TUTUCU (8-10MM CAMA) - CK 300 46  
 CAM TUTUCU 49X49 (8-10MM CAMA) - DCK 400 47  
 CAM TUTUCU 50X40 (8MM CAMA) - DCK 700 47  
 CAM TUTUCU ROTİL ÇİFT TARAFALI - SPR C 56  
 CAM TUTUCU AYARLI SAPLAMALI ANKRAJ 56  
 CAM TUTUCU SAPLAMALI ANKRAJ 56  
 CAM TUTUCU (DİKME ÇİİN) - CTS 010 57  
 CAM TUTUCU (DİKME ÇİİN) - CTS 015 57  
 CAM TUTUCU BİRLİ - CTS 020(BİRLİ) 57  
 CAM TUTUCU İKİLİ - CTS 020(İKİLİ) 57  
 CAM TUTUCU KOLÇAK - CTK 010 58  
 CAM TUTUCU KOLÇAK - CTK 015 58  
 CAM TUTUCU KOLÇAK - CTK 020 58  
 CAM TUTUCU KOLÇAK - CTK 025 58  
 CIVATA GRUBU 86  
 CUBICLE BAĞLANTI SİSTEMLERİ - 1 65  
 CUBICLE BAĞLANTI SİSTEMLERİ - 2 65  
 CUBICLE BAĞLANTI SİSTEMLERİ - 3 65  
 ÇELİK DÜBEL 86  
 ÇOCUK KİLİTİ 68

**D**

DEKORATİF BİLEZİK 28  
 DEKORATİF DİKME BLEZİĞİ 51 28  
 DEKORATİF YÜZÜK - BY 500 27  
 DESENİLİ DİKME BABASI - DDB 43  
 DESENİLİ DİKME BABASI - DDBG 43  
 DESENİLİ DİKME BABASI KARE - KDDB 43  
 DİKME MAFSAL - DM 100 13  
 DİKME MAFSAL - DMTK 100 13  
 DİKME MAFSAL - DM 200 13  
 DİKME MAFSAL - DMA 200 13  
 DİKME MAFSAL - DM 300 14  
 DİKME MAFSAL - DMTK 300 14  
 DİKME MAFSAL - DM 400 14  
 DİKME MAFSAL - DMA 400 14  
 DİKME MAFSAL - DM 500 15  
 DİKME MAFSAL - DM 600 15  
 DİKME MAFSAL - DM 700 15  
 DİKME MAFSAL - DM 800 15  
 DİKME MAFSAL - DM 900 16  
 DİKME MAFSAL - DM 1000 16  
 DİKME MAFSAL - DM 1100 16  
 DİKME MAFSAL - DM 1200 16  
 DİKME MAFSAL - DMA 1200 17  
 DİKME MAFSAL - DMA 1300 17  
 DİKME MAFSAL - DM 1400 17  
 DİKME MAFSAL - DM 1500 17  
 DİKME MAFSAL KARE - DMK 01 18  
 DİKME MAFSAL KARE - DMK 02 18

DİKME MAFSAL KARE - DMKA 01 18  
 DİKME MAFSAL KARE - DMKA 02 18  
 DİKME MAFSAL - DM LMA 19  
 DİKME MAFSAL - DM LM 19  
 DİKME TEPEŞİ Q 38 19  
 DİKME TABAN PULU - DTP 30  
 DİKME KOLÇAĞI - HRA 100 35  
 DİKME KOLÇAĞI - HR 100 35  
 DİKME KOLÇAĞI - HRA 500 37  
 DUVAR KOLÇAĞI - HR 900 38  
 DUVAR KOLÇAĞI - HR1200 39  
 DUVAR KOLÇAĞI - HR 1300 39  
 DİKME BABASI - DB 42  
 DİKME BABASI - DB 100 42  
 DİKME BABASI - DB 200 42  
 DOLU TIRNAKLI KAPAK - DTK 10  
 DOLU TIRNAKLI KAPAK BOMBELİ - DTKB 10  
 DUVAR ROZET - DR 8  
 DÜZ DUVAR ROZET - DDR 8  
 DÜZ BABA BAĞLANTISI - DBB 01 44  
 DÜZ CAM TUTUCU (8-10MM CAMA) - DCK 300 47  
 DÜZ KURTAĞIZLI BADEM YÜZÜK - BY 301 26  
 DÜZ MANŞON 28

**E**

ENGELLİ BANYO OTURAĞI PASLANMAZ 64  
 ENGELLİ BANYO OTURAĞI DUVAR TİPİ 64  
 ENGELLİ TUVALET TUTAMAĞI AÇILI 64  
 ENGELLİ TUVALET TUTAMAĞI DÜZ 64  
 ENGELLİ TUVALET TUTAMAĞI HAREKETLİ KISA 63  
 ENGELLİ TUVALET TUTAMAĞI HAREKETLİ UZUN 63  
 ENGELLİ TUVALET TUTAMAĞI SABİT - L1 63  
 ENGELLİ TUVALET TUTAMAĞI SABİT - L2 63  
 EPOXY TABANCASI 86

**F**

FATURALI MANŞON 28  
 FILE 86  
 FLANŞ - F 30  
 FLANŞ - F1 31  
 FLANŞ - F0 31  
 FLANŞLI DUVAR KOLÇAĞI - HRA 200 35  
 FLANŞLI DUVAR KOLÇAĞI - HRA 201 36  
 FLANŞLI DUVAR KOLÇAĞI - HR 200 36  
 FLANŞLI DUVAR KOLÇAĞI - HRA 700 38  
 FLANŞLI DUVAR KOLÇAĞI - HRA 800 38

**G**

GEÇME KAPAK - GK 9  
 GEÇMELİ PATEN DİRSEK - GPD 90 21  
 GEÇMELİ PATEN DİRSEK - GPD 45 21  
 GEÇMELİ PATEN DİRSEK - GPD 23

**H**

HALAT GERDİRME APARATI - HG 01 62  
 HALAT GERDİRME APARATI - HG 02 62  
 HALAT GERDİRME APARATI - HG 03 62  
 HAREKETLİ DİRSEK - HD 51 22  
 HAREKETLİ DİRSEK KÖŞE - HDK 51 22

**I - İ**

ISICAM ROTİLİ 53  
 ISICAM ROTİL APARATI 53  
 İÇE GEÇME KAPAK DOLU - GKD 10

**K**

KAPI GİRİŞ ÜSTÜ (CAM) HALAT GERDİRME SİSTEMİ 62  
 KAPI STOPERİ - KS 01 66  
 KAPI STOPERİ - KS 02 66  
 KAPI TOKMAĞI 66  
 KARE BADEM YÜZÜK - BY 302 27  
 KARE DİKME BABASI - KDB 42  
 KARE GEÇME KAPAK - GK 9  
 KAYNAKLI KAPAK - KKC 9  
 KAYNAKLI KÖŞE MAFSAL 23  
 KAYNAKLI KÜRE KAPAK - KK 9  
 KAYAR KAPI MEKANİZMASI TAKIM 65  
 KOÇ BOYNUZU 84  
 KOLÇAK - HR 500 37  
 KOLÇAK - HR 800 38  
 KOLÇAK - HRA 1000 39  
 KOLÇAK - HRA 1100 39  
 KÖŞE MAFSAL - KM 22  
 KÖŞE MAFSAL - KM 16 22  
 KÖŞE MAFSAL - KMD 23  
 KURTAĞIZLI BADEM YÜZÜK BY 300 26  
 KURT AĞIZLI BORU YAN ANKRAJ - YA200 32  
 KÜPEŞTE BAĞLANTI VIDALARI 86  
 KÜRE GEÇME KAPAK DOLU - KGKD 10  
 KÜRE YÜZÜK - BY 400 27

**L**

LAMBA 86

**M**

MİL MENTEŞE 67

**O**

OVAL CAM TUTUCU (8-10 MM CAMA) - DCK 200 46  
 OVAL CAM TUTUCU (8 MM CAMA) - DCK 600 47

**Ö**

ÖZEL DEKORATİF DİKME - 01-30 72-83  
 ÖZEL MENTEŞE 50X50 67  
 ÖZEL MENTEŞE 53X89 67  
 ÖZEL MENTEŞE 120X92 67  
 ÖZEL YAYLI MENTEŞE 67

**P**

PARADUŞ KULBU 70  
 PARADUŞ MENTEŞESİ 60  
 PATEN DİRSEK - PD 90 21  
 PATEN DİRSEK - PD 45 21  
 PERÇİN TABANCASI 86  
 PLASTİK TAKOZ - PT 24  
 PLASTİK TAKOZ - PTK 24  
 PLEKSİ DİKME BABASI - PDB 43  
 POP PERÇİNLER 86

**R**

REDİKSİYON 60X51 85  
 REDİKSİYON 76X51 85  
 REDİKSİYON 76X60 85  
 ROZET - PR 4,5  
 ROZET - BPR 4,5  
 ROZET - DPR 4,6  
 ROZET - YPR 4  
 ROZET - DKPR 5  
 ROZET - DDKPR 6  
 ROZET - KPR (61X61) 6  
 ROZET - KPR (84X84) 6  
 ROZET - KDPR (60X60) 7  
 ROZET - KDPR (81X81) 7  
 ROZET - HPR 8

**S**

SABİT DUVAR KOLÇAĞI - HR 400 37  
 SAPLAMALI BAR TEKMELİĞİ - BTS 40  
 SAPLAMALI PLASTİK ANKRAJ - SPA 31  
 SAPLAMALI PLASTİK ANKRAJ (KARE) - SPAK 31  
 SAPLAMASIZ PLASTİK ANKRAJ - PA 31  
 SONSUZ DÖNER 84  
 SPİDER 1'Lİ - SPT 1 49  
 SPİDER 2'Lİ - SPT 2 49  
 SPİDER 3'LÜ - SPT 3 49  
 SPİDER 4'LÜ - SPT 4 49  
 SPİDER 1'Lİ UZUN - SPT U1 50  
 SPİDER 2'Lİ V - SPT V 50  
 SPİDER KONEKTÖRÜ 32X50 (30MM AYARLI) 53  
 SPİDER KONEKTÖRÜ 32X20 (10MM AYARLI) 53  
 SPİDER ROTİL Q50 - SPR 50 54  
 SPİDER ROTİL Q60 - SPR 60 54  
 SPİDER ROTİL ÖNDEN SIKMALI - SPRO 50 54  
 SPİDER ROTİL ÖNDEN SIKMALI - SPRO 50B 54  
 SPİDER ROTİL ÖNDEN SIKMALI - SPRO 60 55  
 SPİDER ROTİL KONİK GÖVDELİ - SPR K 56  
 SPİDER ROTİL YAPIŞTIRMALI Q50 - SPRY 50 55  
 SPİDER ROTİL YAPIŞTIRMALI Q60 - SPRY 60 55  
 SPİDER ROTİL YAPIŞTIRMALI Q100 - SPRY 100 55

**T**

TIRNAKLI İÇE GEÇME KAPAK BOMBELİ - TKB 11  
 TIRNAKLI İÇE GEÇME KAPAK - TK 11  
 TOZ POMPASI 86  
 TUTAMAK DÜZ - TD 40  
 TUTAMAK AÇILI - TA 40

**W**

WC KAPI KİLİTİ - 01 68  
 WC KAPI KİLİTİ - 02 68

**Y**

YAN ANKRAJ BAĞLANTI ELEMANI KARE - YAK100 32  
 YAN ANKRAJ BAĞLANTI ELEMANI - YA100 32  
 YAN ANKRAJ BAĞLANTI ELEMANI - YA300 32  
 YAN ANKRAJ BAĞLANTI ELEMANI - YA 400 33  
 YAN ANKRAJ BAĞLANTI ELEMANI - YA 500 33  
 YAN ANKRAJ BAĞLANTI ELEMANI - YA 600 33  
 YAN ANKRAJ BAĞLANTI ELEMANI - YA 700 33  
 YÜZÜK BAĞLANTI VIDALARI 86

**Z**

ZEMİN BAĞLANTI ANKRAJLI - ZBA 100 30  
 ZEMİN BAĞLANTI EPOXY 86